



Charlie Crist
Governor
Cynthia R. Lorenzo
Director

FOR IMMEDIATE RELEASE
EMBARGOED: December 18, 2009, 10:00AM

CONTACT: Robby Cunningham
(850) 245-7130
roby.cunningham@flaawi.com

Florida's November Employment Figures Released

www.employflorida.com – www.FlaRecovery.com

TALLAHASSEE – Florida's seasonally adjusted unemployment rate for November 2009 is 11.5 percent. This represents 1,056,000 jobless out of a labor force of 9,202,000. The unemployment rate is up 0.2 percentage point from the revised October rate of 11.3 percent, and up 4.3 percentage points from the November 2008 rate. The state's current unemployment rate is 1.5 percentage points higher than the national unemployment rate of 10.0 percent. November's rate is the highest since May 1975 when it was 11.9 percent.

Florida's total nonagricultural employment in November 2009 is 7,323,600, representing a job loss of 284,800, or -3.7 percent, compared to November 2008. This is steeper than the national rate of decline for November which is -3.5 percent over the year. The November 2009 job loss continues the trend of annual declines that began in August 2007. Florida's rate of job decline has moderated over the last few months, moving from -5.4 percent in March 2009 to -3.7 percent in November 2009.

Industries losing the most jobs are construction; trade, transportation, and utilities; and professional and business services. These three industries account for more than two-thirds of the job losses in the state. Health care has been Florida's only growth sector for most of 2009.

Earlier this week, the Florida Agency for Workforce Innovation, in partnership with the Department of Children and Families, Workforce Florida Inc. and the Regional Workforce Boards, announced a new program designed to create jobs for as many as 25,000 Floridians and support businesses. The state can potentially receive up to \$200 million in federal funding through the Temporary Assistance to Needy Families (TANF) program for the [Florida Back to Work](#) initiative between now and September 30, 2010 to pay for jobs for low-income families receiving cash assistance.

"The rate released today reinforces the need for a variety of strategies to help bolster job growth in Florida," said agency Director Cynthia R. Lorenzo. "Under the leadership of Governor Crist, the Florida Back to Work program and the passenger rail legislation that the governor signed into law this week will help as many as 39,000 Floridians get back to work."

Unemployment Benefits Extension

This month the Agency for Workforce Innovation launched an online application for the federal extension of unemployment benefits made available under *The Worker, Homeownership and Business Assistance Act of 2009*, also known as the federal Emergency Unemployment Compensation (EUC) Tier III, which took effect last month. The agency also began mailing out applications for those who do not have computer access.

Unemployed workers who exhausted all benefits **between November 1 and December 26, 2009**, or approximately two-thirds of eligible beneficiaries, have been or will be automatically enrolled and will not need to apply for the extension. Those who exhausted benefits **prior** to November 1, 2009, will need to apply. To date, more than 25,600 customers have completed online applications, and the agency has paid more than \$53 million to customers who either were automatically enrolled or whose online applications have been processed.

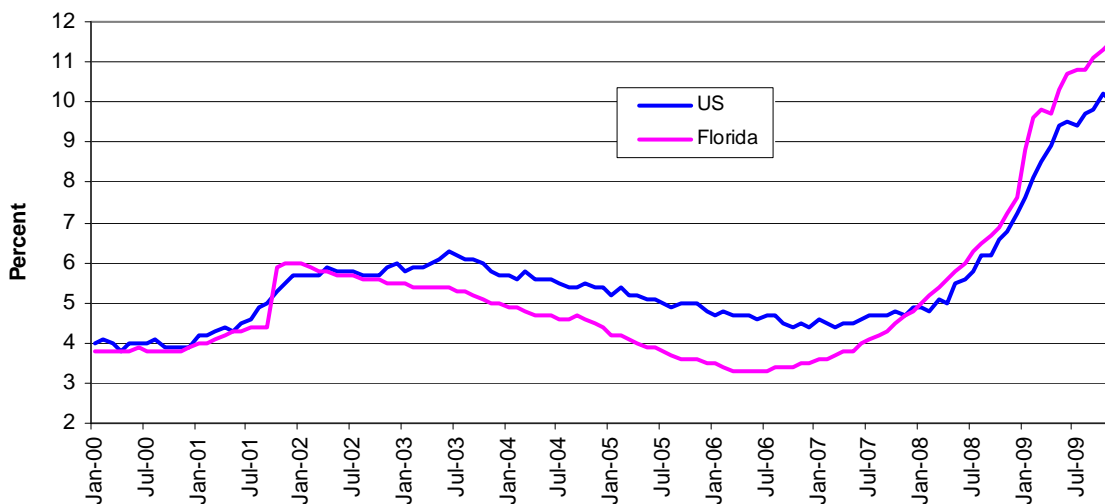
Director Lorenzo also encourages job seekers to visit the Employ Florida Marketplace at www.employflorida.com, Florida's online job bank that provides 24/7 access to a wide variety of local, state and national job openings. Job seekers can post resumes and businesses can post job openings, and both can search the Web site's database to look for potential matches. Employ Florida Marketplace currently lists 146,000 job openings throughout the state.

Florida's workforce system provides critical programs and services to job seekers and businesses alike. Such services offered throughout the state include:

- **One-Stop Career Centers:** Florida's more than 90 One-Stop Career Centers, locally operated by Regional Workforce Boards, provide local access to job placement services, local workforce information and job training opportunities. Follow this link for a [Map of Florida One-Stop Career Centers](http://www.floridajobs.org/onestop/onestopdir/index.htm). (www.floridajobs.org/onestop/onestopdir/index.htm)
- **Mobile One-Stop Career Centers:** Florida's Mobile One-Stop Career Centers allow citizens in rural areas, at job fairs and during disasters or other emergencies to access critical workforce information and services.
- **Ready to Work Credential:** The Florida Ready to Work Credential program provides a career readiness certificate signed by Governor Charlie Crist that verifies the employee or job seeker has the foundational workplace skills required for most positions. Of value to both businesses looking to hire and workers seeking to find or maintain employment, Ready to Work is a free program funded by the State of Florida. For more information, please visit www.floridareadytowork.com or call 1-877-444-4505.
- **Labor Market Information:** The Agency for Workforce Innovation's Labor Market Statistics Center produces data such as employment, unemployment and wage information that assist workforce/economic development, education, employers and job seekers. These statistics assist with economic analysis, business recruitment, career counseling and other critical business decision-making. Follow this link for information about the Agency's [Labor Market Statistics Center](http://www.labormarketinfo.com/). ([www.labormarketinfo.com/.](http://www.labormarketinfo.com/))
- **Work Opportunity Tax Credit:** The Work Opportunity Tax Credit offers a financial incentive to private, for-profit employers to hire individuals from certain targeted groups who experience high rates of unemployment due to a variety of employment barriers. Follow this link for information about the [Work Opportunity Tax Credit](http://www.floridajobs.org/workforce/wotc.html). (www.floridajobs.org/workforce/wotc.html)

For more information on these and other Agency for Workforce Innovation programs, go to www.FloridaJobs.org.

United States and Florida Unemployment Rates (seasonally adjusted)



Source: Florida Agency for Workforce Innovation, Labor Market Statistics Center, Local Area Unemployment Statistics Program, in cooperation with the U.S. Department of Labor, Bureau of Labor Statistics.

Florida's Nonagricultural Employment by Industry (Seasonally Adjusted)

- The number of jobs in Florida is 7,323,600, down 284,800 in November 2009 compared to a year ago. The industry losing the most jobs is construction (-73,300 jobs, -15.4 percent).
- Other industries losing jobs over the year include: trade, transportation, and utilities (-69,500 jobs, -4.5 percent); professional and business services (-58,500 jobs, -5.2 percent); manufacturing (-41,100 jobs, -11.4 percent); financial activities (-25,300 jobs, -4.9 percent); leisure and hospitality (-10,000 jobs, -1.1 percent); total government (-7,500 jobs, -0.7 percent); information (-6,300 jobs, -4.2 percent); and other services (-1,500 jobs, -0.4 percent).
- These industry job losses are partially due to weakness in specialty trade contractors; motor vehicle and parts dealers; employment services; fabricated metal product manufacturing; credit intermediation; amusement, gambling, and recreation; local government; telecommunications; and repair and maintenance.
- Private education and health services (+8,400 jobs, +0.8 percent) is the only sector gaining jobs among Florida's major industries. All of the increase is due to health care and social assistance (+10,500 jobs, +1.1 percent), primarily in nursing and residential care facilities. Private education declined by 2,100 jobs (-1.5 percent) over the year.

Local Area Unemployment Statistics (Not Seasonally Adjusted)

- In November 2009, Liberty County has the state's lowest unemployment rate (6.1 percent), followed by Monroe County (7.3 percent); Jackson and Wakulla counties (7.8 percent each); Alachua, Leon, and Walton counties (7.9 percent each); and Holmes and Okaloosa counties (8.1 percent each). Many of the counties with the lowest unemployment rates are those with relatively high proportions of government employment.
- Flagler County (16.8 percent) has the highest unemployment rate in Florida in November 2009, followed by Hendry County (14.9 percent); Hernando and St. Lucie counties (14.7 percent each); Indian River County (14.6 percent); and Lee and Marion counties (13.9 percent each). The counties with high unemployment rates have either a high proportion of agricultural employees or continued weakness in construction and manufacturing.

Area Nonagricultural Employment (Not Seasonally Adjusted)

- All metro areas in the state lost jobs over the year in November 2009. Metro areas with the steepest declines include Naples-Marco Island (-7.5 percent, -9,300 jobs); Palm Coast (-7.1 percent, -1,300 jobs); Sebastian-Vero Beach (-6.7 percent, -3,100 jobs); Cape Coral-Ft. Myers (-6.4 percent, -13,400 jobs); and Bradenton-Sarasota-Venice (-5.6 percent, -14,900 jobs).

Note: These unemployment and job growth rates are estimates, which are primarily based on surveys created and mandated by the US Bureau of Labor Statistics in cooperation with the Florida Agency for Workforce Innovation.

The unemployment rate is derived from Florida household surveys conducted by the US Census Bureau under contract with the US Bureau of Labor Statistics. The job growth rate is derived from Florida employer surveys conducted by the US Bureau of Labor Statistics.

Both estimates are revised on a monthly basis. In addition, these estimates are benchmarked (revised) annually based on actual counts from Florida's Unemployment Compensation tax records and other data.

###

An equal opportunity employer/ program. Auxiliary aids and services are available upon request to individuals with disabilities. All voice telephone numbers on this document may be reached by persons using TTY/TDD equipment via the Florida Relay Service at 711.

The Agency for Workforce Innovation is Florida's lead workforce agency and directly administers the state's various workforce and unemployment programs and the Office of Early Learning. Workforce development policy and guidance are provided by Workforce Florida, Inc. Partnering together, along with the state's 24 Regional Workforce Boards that deliver services through nearly 90 One-Stop Career Centers around the state, they compose the Employ Florida network.

The next Florida Employment and Unemployment release will be on January 22, 2010 at 10:00 A.M.

LABOR FORCE STATUS OF THE CIVILIAN NONINSTITUTIONAL POPULATION
RELEASE DATE: DECEMBER 18, 2009

SEASONALLY ADJUSTED

	Current Month November 2009	Month Ago October 2009	Year Ago November 2008	Over-the-Month Change		Over-the-Year Change	
				Level	Percent	Level	Percent

STATE OF FLORIDA

Civilian Noninstitutional							
Population 16+	14,606,000	14,597,000	14,502,000	9,000	0.1	104,000	0.7
Civilian Labor Force	9,202,000	9,183,000	9,316,000	19,000	0.2	-114,000	-1.2
Employment	8,146,000	8,148,000	8,641,000	-2,000	**	-495,000	-5.7
Unemployment	1,056,000	1,035,000	675,000	21,000	2.0	381,000	56.4
Unemployment Rate (%)	11.5	11.3	7.2	0.2	--	4.3	--

UNITED STATES

Civilian Noninstitutional							
Population 16+	236,743,000	236,550,000	234,828,000	193,000	0.1	1,915,000	0.8
Civilian Labor Force	153,877,000	153,975,000	154,620,000	-98,000	-0.1	-743,000	-0.5
Employment	138,502,000	138,275,000	144,144,000	227,000	0.2	-5,642,000	-3.9
Unemployment	15,375,000	15,700,000	10,476,000	-325,000	-2.1	4,899,000	46.8
Unemployment Rate (%)	10.0	10.2	6.8	-0.2	--	3.2	--

NOT SEASONALLY ADJUSTED

	Current Month November 2009	Month Ago October 2009	Year Ago November 2008	Over-the-Month Change		Over-the-Year Change	
				Level	Percent	Level	Percent

STATE OF FLORIDA

Civilian Noninstitutional							
Population 16+	14,606,000	14,597,000	14,502,000	9,000	0.1	104,000	0.7
Civilian Labor Force	9,195,000	9,200,000	9,264,000	-5,000	-0.1	-69,000	-0.7
Employment	8,142,000	8,161,000	8,580,000	-19,000	-0.2	-438,000	-5.1
Unemployment	1,053,000	1,039,000	684,000	14,000	1.3	369,000	53.9
Unemployment Rate (%)	11.5	11.3	7.4	0.2	--	4.1	--

UNITED STATES

Civilian Noninstitutional							
Population 16+	236,743,000	236,550,000	234,828,000	193,000	0.1	1,915,000	0.8
Civilian Labor Force	153,539,000	153,635,000	154,624,000	-96,000	-0.1	-1,085,000	-0.7
Employment	139,132,000	139,088,000	144,609,000	44,000	**	-5,477,000	-3.8
Unemployment	14,407,000	14,547,000	10,015,000	-140,000	-1.0	4,392,000	43.9
Unemployment Rate (%)	9.4	9.5	6.5	-0.1	--	2.9	--

** = Less than 0.05 percent

Note: All estimates except unemployment rates are rounded to the nearest thousand. Items may not add to totals or compute to displayed percentages due to rounding. All data are subject to revision.

Source: Florida Agency for Workforce Innovation, Labor Market Statistics Center, Local Area Unemployment Statistics Program, in cooperation with the U.S Department of Labor, Bureau of Labor Statistics.

Nonagricultural Employment in Florida
Seasonally Adjusted (in thousands)

	November ^P 2009	October ^r 2009	November 2008	Over-the-Month Change		Over-the-Year Change	
				Level	Percent	Level	Percent
Total Nonagricultural Employment	7,323.6	7,340.3	7,608.4	-16.7	-0.2	-284.8	-3.7
Construction	402.0	411.2	475.3	-9.2	-2.2	-73.3	-15.4
Manufacturing	319.7	321.5	360.8	-1.8	-0.6	-41.1	-11.4
Trade, Transportation, and Utilities	1,474.0	1,474.6	1,543.5	-0.6	*	-69.5	-4.5
Wholesale Trade	332.8	330.5	344.1	2.3	0.7	-11.3	-3.3
Retail Trade	912.4	915.0	961.8	-2.6	-0.3	-49.4	-5.1
Transportation, Warehousing, and Utilities	228.8	229.1	237.6	-0.3	-0.1	-8.8	-3.7
Information	143.5	146.1	149.8	-2.6	-1.8	-6.3	-4.2
Financial Activities	494.1	495.7	519.4	-1.6	-0.3	-25.3	-4.9
Finance and Insurance	328.8	329.2	348.3	-0.4	-0.1	-19.5	-5.6
Real Estate, Rental, and Leasing	165.3	166.5	171.1	-1.2	-0.7	-5.8	-3.4
Professional and Business Services	1,058.3	1,057.2	1,116.8	1.1	0.1	-58.5	-5.2
Professional and Technical Services	439.3	438.4	449.5	0.9	0.2	-10.2	-2.3
Management of Companies and Enterprises	80.0	79.4	81.1	0.6	0.8	-1.1	-1.4
Administrative and Waste Services	539.0	539.4	586.2	-0.4	-0.1	-47.2	-8.1
Education and Health Services	1,066.1	1,065.0	1,057.7	1.1	0.1	8.4	0.8
Educational Services	138.6	136.8	140.7	1.8	1.3	-2.1	-1.5
Health Care and Social Assistance	927.5	928.2	917.0	-0.7	-0.1	10.5	1.1
Leisure and Hospitality	908.6	910.1	918.6	-1.5	-0.2	-10.0	-1.1
Arts, Entertainment, and Recreation	167.5	172.8	179.1	-5.3	-3.1	-11.6	-6.5
Accommodation and Food Services	741.1	737.3	739.5	3.8	0.5	1.6	0.2
Other Services	332.9	333.1	334.4	-0.2	-0.1	-1.5	-0.4
Total Government	1,118.3	1,119.7	1,125.8	-1.4	-0.1	-7.5	-0.7
Local Government	773.6	774.3	782.4	-0.7	-0.1	-8.8	-1.1

^P = preliminary, ^r = revised

* = less than 0.1 percent

Note: Sum of detail may not equal totals due to rounding or the exclusion of certain industries from publication. All data are subject to revision.

Released December 18, 2009.

Source: Florida Agency for Workforce Innovation, Labor Market Statistics Center, Current Employment Statistics Program in cooperation with the U.S. Department of Labor, Bureau of Labor Statistics.

**NONAGRICULTURAL EMPLOYMENT IN FLORIDA
STATEWIDE (Not Seasonally Adjusted)**

Released December 18, 2009

Industry Title	November 2009	October 2009	November 2008	Change from			
				Oct 2009 to Nov 2009 Level	Percent	Nov 2008 to Nov 2009 Level	Percent
Total Nonagricultural Employment	7,364,200	7,342,200	7,650,700	22,000	0.3%	-286,500	-3.7%
Total Private	6,221,700	6,200,900	6,500,600	20,800	0.3%	-278,900	-4.3%
Goods Producing	729,900	742,200	844,400	-12,300	-1.7%	-114,500	-13.6%
Mining and Logging	6,100	6,100	6,300	0	0.0%	-200	-3.2%
Mining, except Oil and Gas	3,600	3,600	3,800	0	0.0%	-200	-5.3%
Construction	403,300	414,300	476,500	-11,000	-2.7%	-73,200	-15.4%
Construction of Buildings	87,900	90,400	98,400	-2,500	-2.8%	-10,500	-10.7%
Heavy and Civil Engineering Construction	50,500	51,200	62,900	-700	-1.4%	-12,400	-19.7%
Specialty Trade Contractors	264,900	272,700	315,200	-7,800	-2.9%	-50,300	-16.0%
Building Equipment Contractors	116,900	118,900	134,300	-2,000	-1.7%	-17,400	-13.0%
Manufacturing	320,500	321,800	361,600	-1,300	-0.4%	-41,100	-11.4%
Durable Goods	214,700	214,700	243,500	0	0.0%	-28,800	-11.8%
Fabricated Metal Product Manufacturing	29,400	30,100	36,600	-700	-2.3%	-7,200	-19.7%
Computer and Electronic Product Manufacturing	44,600	44,600	47,200	0	0.0%	-2,600	-5.5%
Communications Equipment Manufacturing	7,900	7,900	8,300	0	0.0%	-400	-4.8%
Transportation Equipment Manufacturing	38,700	38,900	41,200	-200	-0.5%	-2,500	-6.1%
Aerospace Product and Parts Manufacturing	20,300	20,200	20,100	100	0.5%	200	1.0%
Miscellaneous Durable Goods Manufacturing	27,700	27,700	29,800	0	0.0%	-2,100	-7.1%
Nondurable Goods	105,800	107,100	118,100	-1,300	-1.2%	-12,300	-10.4%
Food Manufacturing	27,000	26,700	29,000	300	1.1%	-2,000	-6.9%
Beverage and Tobacco Product Manufacturing	10,300	10,300	10,800	0	0.0%	-500	-4.6%
Paper Manufacturing	9,100	9,100	10,000	0	0.0%	-900	-9.0%
Printing and Related Support Activities	17,600	17,700	20,900	-100	-0.6%	-3,300	-15.8%
Chemical Manufacturing	19,000	19,000	20,700	0	0.0%	-1,700	-8.2%

Source: Florida Agency for Workforce Innovation, Labor Market Statistics Center, Current Employment Statistics Program (in cooperation with the U.S. Department of Labor, Bureau of Labor Statistics).

**NONAGRICULTURAL EMPLOYMENT IN FLORIDA
STATEWIDE (Not Seasonally Adjusted)**

Released December 18, 2009

Industry Title	November 2009	October 2009	November 2008	Change from			
				Oct 2009 to Nov 2009 Level	Percent	Nov 2008 to Nov 2009 Level	Percent
Service Providing	6,634,300	6,600,000	6,806,300	34,300	0.5%	-172,000	-2.5%
Private Service Providing	5,491,800	5,458,700	5,656,200	33,100	0.6%	-164,400	-2.9%
Trade, Transportation, and Utilities	1,494,900	1,470,200	1,565,500	24,700	1.7%	-70,600	-4.5%
Wholesale Trade	334,100	331,000	345,400	3,100	0.9%	-11,300	-3.3%
Merchant Wholesalers, Durable Goods	171,100	168,800	177,600	2,300	1.4%	-6,500	-3.7%
Commercial Equipment Wholesalers	46,900	47,200	46,800	-300	-0.6%	100	0.2%
Electronic Goods Wholesalers	22,600	22,700	23,500	-100	-0.4%	-900	-3.8%
Machinery and Supply Wholesalers	30,800	30,600	32,300	200	0.7%	-1,500	-4.6%
Merchant Wholesalers, Nondurable Goods	117,800	117,300	121,300	500	0.4%	-3,500	-2.9%
Grocery and Related Product Wholesalers	43,500	42,800	45,100	700	1.6%	-1,600	-3.6%
Wholesale Electronic Markets and Agents	45,200	44,900	46,500	300	0.7%	-1,300	-2.8%
Retail Trade	930,800	909,300	981,300	21,500	2.4%	-50,500	-5.2%
Motor Vehicle and Parts Dealers	103,000	102,700	119,300	300	0.3%	-16,300	-13.7%
Automobile Dealers	64,300	65,600	75,900	-1,300	-2.0%	-11,600	-15.3%
Furniture and Home Furnishings Stores	33,500	32,900	39,400	600	1.8%	-5,900	-15.0%
Electronics and Appliance Stores	35,600	34,000	38,400	1,600	4.7%	-2,800	-7.3%
Building Material and Garden Supply Stores	70,900	70,500	72,900	400	0.6%	-2,000	-2.7%
Food and Beverage Stores	186,300	184,900	193,400	1,400	0.8%	-7,100	-3.7%
Health and Personal Care Stores	69,400	69,200	71,700	200	0.3%	-2,300	-3.2%
Gasoline Stations	36,100	35,800	36,600	300	0.8%	-500	-1.4%
Clothing and Accessory Stores	105,700	100,500	110,600	5,200	5.2%	-4,900	-4.4%
Sporting Goods, Hobby, Book, and Music Stores	34,300	32,300	36,400	2,000	6.2%	-2,100	-5.8%
General Merchandise Stores	185,900	177,100	189,300	8,800	5.0%	-3,400	-1.8%
Department Stores	81,600	76,500	84,600	5,100	6.7%	-3,000	-3.6%
Other General Merchandise Stores	104,300	100,600	104,700	3,700	3.7%	-400	-0.4%
Miscellaneous Store Retailers	48,800	48,400	50,800	400	0.8%	-2,000	-3.9%
Nonstore Retailers	21,300	21,000	22,500	300	1.4%	-1,200	-5.3%
Electronic Shopping and Mail-Order Houses	14,500	14,200	14,700	300	2.1%	-200	-1.4%
Transportation, Warehousing, and Utilities	230,000	229,900	238,800	100	0.0%	-8,800	-3.7%
Utilities	23,600	23,700	24,100	-100	-0.4%	-500	-2.1%

Source: Florida Agency for Workforce Innovation, Labor Market Statistics Center, Current Employment Statistics Program (in cooperation with the U.S. Department of Labor, Bureau of Labor Statistics).

**NONAGRICULTURAL EMPLOYMENT IN FLORIDA
STATEWIDE (Not Seasonally Adjusted)**

Released December 18, 2009

Industry Title	November 2009	October 2009	November 2008	Change from			
				Oct 2009 to Nov 2009 Level	Oct 2009 to Nov 2009 Percent	Nov 2008 to Nov 2009 Level	Nov 2008 to Nov 2009 Percent
Transportation and Warehousing	206,400	206,200	214,700	200	0.1%	-8,300	-3.9%
Air Transportation	30,400	30,600	31,000	-200	-0.7%	-600	-1.9%
Water Transportation	12,100	12,000	12,400	100	0.8%	-300	-2.4%
Truck Transportation	43,800	43,200	43,500	600	1.4%	300	0.7%
Support Activities for Transportation	41,200	40,600	46,500	600	1.5%	-5,300	-11.4%
Couriers and Messengers	30,200	30,100	30,500	100	0.3%	-300	-1.0%
Warehousing and Storage	27,600	27,500	28,500	100	0.4%	-900	-3.2%
Information	143,600	145,600	150,000	-2,000	-1.4%	-6,400	-4.3%
Publishing Industries, except Internet	36,300	36,500	38,200	-200	-0.6%	-1,900	-5.0%
Broadcasting, except Internet	13,200	13,200	14,900	0	0.0%	-1,700	-11.4%
Telecommunications	60,800	61,700	63,200	-900	-1.5%	-2,400	-3.8%
Wired Telecommunications Carriers	44,500	44,900	46,600	-400	-0.9%	-2,100	-4.5%
Internet Service Providers and Data Processing	15,400	15,300	16,800	100	0.7%	-1,400	-8.3%
Financial Activities	493,300	496,600	518,500	-3,300	-0.7%	-25,200	-4.9%
Finance and Insurance	328,400	329,700	347,800	-1,300	-0.4%	-19,400	-5.6%
Credit Intermediation and Related Activities	153,500	154,000	165,900	-500	-0.3%	-12,400	-7.5%
Depository Credit Intermediation	95,800	96,400	102,000	-600	-0.6%	-6,200	-6.1%
Insurance Carriers and Related Activities	131,800	132,200	133,900	-400	-0.3%	-2,100	-1.6%
Insurance Carriers	72,400	72,400	73,000	0	0.0%	-600	-0.8%
Insurance Agencies, Brokerages, and Related	59,400	59,800	60,900	-400	-0.7%	-1,500	-2.5%
Real Estate, Rental, and Leasing	164,900	166,900	170,700	-2,000	-1.2%	-5,800	-3.4%
Real Estate	123,500	124,500	125,400	-1,000	-0.8%	-1,900	-1.5%
Professional and Business Services	1,063,000	1,055,200	1,121,800	7,800	0.7%	-58,800	-5.2%
Professional and Technical Services	439,900	437,700	450,000	2,200	0.5%	-10,100	-2.2%
Legal Services	85,900	86,000	91,500	-100	-0.1%	-5,600	-6.1%
Accounting, Tax Preparation, and Bookkeeping	56,000	56,700	53,100	-700	-1.2%	2,900	5.5%
Architectural, Engineering, and Related	73,900	73,500	80,600	400	0.5%	-6,700	-8.3%
Computer Systems Design and Related	65,900	64,400	65,200	1,500	2.3%	700	1.1%
Management, Scientific, and Technical	71,200	70,100	70,000	1,100	1.6%	1,200	1.7%
Management of Companies and Enterprises	80,400	79,900	81,500	500	0.6%	-1,100	-1.4%

Source: Florida Agency for Workforce Innovation, Labor Market Statistics Center, Current Employment Statistics Program (in cooperation with the U.S. Department of Labor, Bureau of Labor Statistics).

**NONAGRICULTURAL EMPLOYMENT IN FLORIDA
STATEWIDE (Not Seasonally Adjusted)**

Released December 18, 2009

Industry Title	November 2009	October 2009	November 2008	Change from			
				Oct 2009 to Nov 2009 Level	Percent	Nov 2008 to Nov 2009 Level	Percent
Administrative and Waste Services	542,700	537,600	590,300	5,100	1.0%	-47,600	-8.1%
Administrative and Support Services	521,700	516,500	569,500	5,200	1.0%	-47,800	-8.4%
Employment Services	183,300	182,000	209,000	1,300	0.7%	-25,700	-12.3%
Business Support Services	63,000	62,100	65,700	900	1.5%	-2,700	-4.1%
Travel Arrangement and Reservation Services	29,200	29,100	31,900	100	0.3%	-2,700	-8.5%
Investigation and Security Services	63,300	63,000	63,200	300	0.5%	100	0.2%
Services to Buildings and Dwellings	137,300	136,000	138,600	1,300	1.0%	-1,300	-0.9%
Waste Management and Remediation Services	21,000	21,100	20,800	-100	-0.5%	200	1.0%
Education and Health Services	1,070,100	1,068,700	1,061,800	1,400	0.1%	8,300	0.8%
Educational Services	142,000	139,500	144,000	2,500	1.8%	-2,000	-1.4%
Elementary and Secondary Schools	46,500	46,100	48,100	400	0.9%	-1,600	-3.3%
Colleges and Universities	54,400	53,900	54,100	500	0.9%	300	0.6%
Health Care and Social Assistance	928,100	929,200	917,800	-1,100	-0.1%	10,300	1.1%
Ambulatory Health Care Services	378,500	379,500	377,500	-1,000	-0.3%	1,000	0.3%
Offices of Physicians	172,500	173,200	172,200	-700	-0.4%	300	0.2%
Home Health Care Services	58,100	57,200	57,800	900	1.6%	300	0.5%
Hospitals	254,900	255,700	253,800	-800	-0.3%	1,100	0.4%
Nursing and Residential Care Facilities	180,000	180,200	173,700	-200	-0.1%	6,300	3.6%
Nursing Care Facilities	102,500	102,100	98,400	400	0.4%	4,100	4.2%
Community Care for the Elderly	46,300	46,300	45,500	0	0.0%	800	1.8%
Social Assistance	114,700	113,800	112,800	900	0.8%	1,900	1.7%
Leisure and Hospitality	894,000	889,800	904,300	4,200	0.5%	-10,300	-1.1%
Arts, Entertainment, and Recreation	165,600	169,000	177,100	-3,400	-2.0%	-11,500	-6.5%
Amusement, Gambling, and Recreation	129,200	131,600	138,200	-2,400	-1.8%	-9,000	-6.5%
Amusement Parks and Arcades	53,300	56,200	55,000	-2,900	-5.2%	-1,700	-3.1%
Accommodation and Food Services	728,400	720,800	727,200	7,600	1.1%	1,200	0.2%
Accommodation	149,700	147,100	149,800	2,600	1.8%	-100	-0.1%
Food Services and Drinking Places	578,700	573,700	577,400	5,000	0.9%	1,300	0.2%

Source: Florida Agency for Workforce Innovation, Labor Market Statistics Center, Current Employment Statistics Program (in cooperation with the U.S. Department of Labor, Bureau of Labor Statistics).

**NONAGRICULTURAL EMPLOYMENT IN FLORIDA
STATEWIDE (Not Seasonally Adjusted)**

Released December 18, 2009

Industry Title	November 2009	October 2009	November 2008	Change from			
				Oct 2009 to Nov 2009 Level	Percent	Nov 2008 to Nov 2009 Level	Percent
Other Services	332,900	332,600	334,300	300	0.1%	-1,400	-0.4%
Repair and Maintenance	66,000	66,600	68,500	-600	-0.9%	-2,500	-3.7%
Automotive Repair and Maintenance	44,200	44,800	45,500	-600	-1.3%	-1,300	-2.9%
Personal and Laundry Services	81,700	80,600	83,900	1,100	1.4%	-2,200	-2.6%
Membership Associations and Organizations	185,200	185,400	181,900	-200	-0.1%	3,300	1.8%
Total Government	1,142,500	1,141,300	1,150,100	1,200	0.1%	-7,600	-0.7%
Federal	129,900	130,600	129,800	-700	-0.5%	100	0.1%
State	219,600	219,600	218,300	0	0.0%	1,300	0.6%
Local	793,000	791,100	802,000	1,900	0.2%	-9,000	-1.1%

Note: Employment estimates have been rounded to the nearest hundred. Sum of detail may not equal totals due to rounding or the exclusion of certain industries from publication. All data are subject to revision.

STATE OF FLORIDA
LOCAL AREA UNEMPLOYMENT STATISTICS BY COUNTY
(NOT SEASONALLY ADJUSTED)

COUNTY	NOVEMBER 2009				OCTOBER 2009				NOVEMBER 2008			
	LABOR FORCE	EMPLOY- MENT	UNEMPLOYMENT LEVEL	RATE (%)	LABOR FORCE	EMPLOY- MENT	UNEMPLOYMENT LEVEL	RATE (%)	LABOR FORCE	EMPLOY- MENT	UNEMPLOYMENT LEVEL	RATE (%)
ALACHUA	132320	121923	10397	7.9	132430	122916	9514	7.2	133763	127279	6484	4.8
BAKER	12169	10756	1413	11.6	12127	10787	1340	11.0	12115	11321	794	6.6
BAY	86849	77528	9321	10.7	87456	79064	8392	9.6	88244	81793	6451	7.3
BRADFORD	12757	11623	1134	8.9	12736	11693	1043	8.2	12694	12003	691	5.4
BREVARD	265566	233892	31674	11.9	265215	234849	30366	11.4	266808	245539	21269	8.0
BROWARD	1002039	900950	101089	10.1	1003017	905394	97623	9.7	1013155	947518	65637	6.5
CALHOUN	6114	5546	568	9.3	6130	5599	531	8.7	5999	5663	336	5.6
CHARLOTTE	68839	59881	8958	13.0	68697	59944	8753	12.7	69187	62598	6589	9.5
CITRUS	59565	52054	7511	12.6	59170	52032	7138	12.1	59236	53750	5486	9.3
CLAY	94635	84797	9838	10.4	94428	85039	9389	9.9	95362	89249	6113	6.4
COLLIER	146650	128588	18062	12.3	144816	126637	18179	12.6	152761	140742	12019	7.9
COLUMBIA	33601	30070	3531	10.5	33577	30326	3251	9.7	32737	30712	2025	6.2
DESOTO	15644	13883	1761	11.3	15071	13325	1746	11.6	15481	14265	1216	7.9
DIXIE	5573	4845	728	13.1	5609	4925	684	12.2	5615	5151	464	8.3
DUVAL	448779	396150	52629	11.7	447655	397281	50374	11.3	449293	416950	32343	7.2
ESCAMBIA	140565	125268	15297	10.9	139759	125848	13911	10.0	140963	130959	10004	7.1
FLAGLER	31278	26023	5255	16.8	31180	26138	5042	16.2	32129	28552	3577	11.1
FRANKLIN	4554	4153	401	8.8	4573	4216	357	7.8	4618	4374	244	5.3
GADSDEN	21311	19160	2151	10.1	21260	19244	2016	9.5	21505	19967	1538	7.2
GILCHRIST	7967	7133	834	10.5	7985	7191	794	9.9	7991	7446	545	6.8
GLADES	4967	4482	485	9.8	4966	4505	461	9.3	5052	4680	372	7.4
GULF	6266	5606	660	10.5	6270	5648	622	9.9	6246	5822	424	6.8
HAMILTON	4919	4307	612	12.4	4923	4363	560	11.4	4951	4490	461	9.3
HARDEE	12426	10906	1520	12.2	12027	10554	1473	12.2	12596	11613	983	7.8
HENDRY	18605	15832	2773	14.9	18152	15307	2845	15.7	18921	16755	2166	11.4
HERNANDO	63082	53814	9268	14.7	62811	54019	8792	14.0	63724	57235	6489	10.2
HIGHLANDS	42832	37821	5011	11.7	41685	36913	4772	11.4	42080	38515	3565	8.5
HILLSBOROUGH	601529	528818	72711	12.1	600982	530839	70143	11.7	608108	562436	45672	7.5
HOLMES	9239	8492	747	8.1	9266	8574	692	7.5	9235	8717	518	5.6
INDIAN RIVER	60763	51865	8898	14.6	60807	51730	9077	14.9	61800	55957	5843	9.5
JACKSON	22585	20829	1756	7.8	22561	20937	1624	7.2	22663	21366	1297	5.7
JEFFERSON	6909	6292	617	8.9	6925	6319	606	8.8	6949	6557	392	5.6
LAFAYETTE	3130	2867	263	8.4	3147	2912	235	7.5	3062	2899	163	5.3
LAKE	135039	117836	17203	12.7	135205	118796	16409	12.1	136136	125303	10833	8.0
LEE	272627	234648	37979	13.9	272031	234764	37267	13.7	282907	255089	27818	9.8
LEON	146989	135430	11559	7.9	146486	136022	10464	7.1	148704	141133	7571	5.1
LEVY	17215	15094	2121	12.3	17252	15240	2012	11.7	17473	15972	1501	8.6
LIBERTY	4120	3869	251	6.1	4119	3897	222	5.4	4017	3835	182	4.5

STATE OF FLORIDA
LOCAL AREA UNEMPLOYMENT STATISTICS BY COUNTY
(NOT SEASONALLY ADJUSTED)

COUNTY	NOVEMBER 2009				OCTOBER 2009				NOVEMBER 2008			
	LABOR FORCE	EMPLOY- MENT	UNEMPLOYMENT LEVEL	UNEMPLOYMENT RATE (%)	LABOR FORCE	EMPLOY- MENT	UNEMPLOYMENT LEVEL	UNEMPLOYMENT RATE (%)	LABOR FORCE	EMPLOY- MENT	UNEMPLOYMENT LEVEL	UNEMPLOYMENT RATE (%)
MADISON	6991	6085	906	13.0	6975	6152	823	11.8	6990	6412	578	8.3
MANATEE	143403	124870	18533	12.9	142804	125089	17715	12.4	146637	134170	12467	8.5
MARION	139170	119868	19302	13.9	138847	120194	18653	13.4	140675	127182	13493	9.6
MARTIN	64452	56442	8010	12.4	63940	56262	7678	12.0	64044	58800	5244	8.2
MIAMI-DADE	1226918	1098429	128489	10.5	1242228	1095203	147025	11.8	1214031	1139072	74959	6.2
MONROE	47851	44358	3493	7.3	47014	43680	3334	7.1	47546	45206	2340	4.9
NASSAU	35756	31860	3896	10.9	35761	31951	3810	10.7	35896	33533	2363	6.6
OKALOOSA	95848	88043	7805	8.1	95767	88609	7158	7.5	97323	91982	5341	5.5
OKEECHOBEE	18372	15894	2478	13.5	18312	15888	2424	13.2	18149	16350	1799	9.9
ORANGE	600005	530003	70002	11.7	602604	534319	68285	11.3	608028	563588	44440	7.3
OSCEOLA	135915	117838	18077	13.3	136503	118798	17705	13.0	136438	125305	11133	8.2
PALM BEACH	628917	555598	73319	11.7	626063	554039	72024	11.5	630908	581767	49141	7.8
PASCO	196064	170128	25936	13.2	195319	170778	24541	12.6	198468	180944	17524	8.8
PINELLAS	453190	400055	53135	11.7	452630	401583	51047	11.3	461209	425487	35722	7.7
POLK	274252	238850	35402	12.9	273217	238895	34322	12.6	275550	252844	22706	8.2
PUTNAM	33090	28847	4243	12.8	33464	29185	4279	12.8	33159	30265	2894	8.7
ST. JOHNS	92778	83773	9005	9.7	92528	84012	8516	9.2	93856	88171	5685	6.1
ST. LUCIE	124351	106109	18242	14.7	124056	105772	18284	14.7	123554	110542	13012	10.5
SANTA ROSA	68982	62129	6853	9.9	68878	62416	6462	9.4	69459	64951	4508	6.5
SARASOTA	164926	144658	20268	12.3	165102	144911	20191	12.2	169234	155430	13804	8.2
SEMINOLE	239136	213067	26069	10.9	240187	214802	25385	10.6	243198	226569	16629	6.8
SUMTER	32125	28994	3131	9.7	32120	29152	2968	9.2	32150	30076	2074	6.5
SUWANNEE	18165	16185	1980	10.9	18060	16243	1817	10.1	18212	16985	1227	6.7
TAYLOR	9248	8204	1044	11.3	9264	8247	1017	11.0	9149	8445	704	7.7
UNION	5348	4851	497	9.3	5344	4886	458	8.6	5275	4988	287	5.4
VOLUSIA	252776	221575	31201	12.3	252612	222918	29694	11.8	252886	232314	20572	8.1
WAKULLA	15335	14139	1196	7.8	15385	14201	1184	7.7	15610	14735	875	5.6
WALTON	31783	29266	2517	7.9	32043	29695	2348	7.3	31677	29981	1696	5.4
WASHINGTON	10077	8971	1106	11.0	10069	9083	986	9.8	10055	9309	746	7.4
FLORIDA												
NOT SEASONALLY ADJUSTED												
	9195000	8142000	1053000	11.5	9200000	8161000	1039000	11.3	9264000	8580000	684000	7.4
SEASONALLY ADJUSTED												
	9202000	8146000	1056000	11.5	9183000	8148000	1035000	11.3	9316000	8641000	675000	7.2
UNITED STATES												
NOT SEASONALLY ADJUSTED												
	153539000	139132000	14407000	9.4	153635000	139088000	14547000	9.5	154624000	144609000	10015000	6.5
SEASONALLY ADJUSTED												
	153877000	138502000	15375000	10.0	153975000	138275000	15700000	10.2	154620000	144144000	10476000	6.8

PAGE 2 OF 2

RELEASED DECEMBER 18, 2009

NOTE: Items may not add to totals or compute to displayed percentages due to rounding. All data are subject to revision.

SOURCE: Florida Agency for Workforce Innovation, Labor Market Statistics Center, Local Area Unemployment Statistics Program, in cooperation with the U.S. Department of Labor, Bureau of Labor Statistics.

STATE OF FLORIDA
LOCAL AREA UNEMPLOYMENT STATISTICS BY METROPOLITAN STATISTICAL AREA (MSA)
(NOT SEASONALLY ADJUSTED)

MSA (COUNTIES)	NOVEMBER 2009				OCTOBER 2009				NOVEMBER 2008			
	LABOR FORCE	EMPLOYMENT	UNEMPLOYMENT LEVEL	UNEMPLOYMENT RATE (%)	LABOR FORCE	EMPLOYMENT	UNEMPLOYMENT LEVEL	UNEMPLOYMENT RATE (%)	LABOR FORCE	EMPLOYMENT	UNEMPLOYMENT LEVEL	UNEMPLOYMENT RATE (%)
BRADENTON-SARASOTA-VENICE (Manatee and Sarasota)	308329	269528	38801	12.6	307906	270000	37906	12.3	315871	289600	26271	8.3
CAPE CORAL-FT. MYERS (Lee)	272627	234648	37979	13.9	272031	234764	37267	13.7	282907	255089	27818	9.8
DELTONA-DAYTONA BEACH-ORMOND BEACH (Volusia)	252776	221575	31201	12.3	252612	222918	29694	11.8	252886	232314	20572	8.1
FT. WALTON BEACH-CRESTVIEW-DESTIN (Okaloosa)	95848	88043	7805	8.1	95767	88609	7158	7.5	97323	91982	5341	5.5
GAINESVILLE (Alachua and Gilchrist)	140287	129056	11231	8.0	140415	130107	10308	7.3	141754	134725	7029	5.0
JACKSONVILLE (Baker, Clay, Duval, Nassau, and St. Johns)	684118	607337	76781	11.2	682500	609071	73429	10.8	686523	639225	47298	6.9
LAKELAND-WINTER HAVEN (Polk)	274252	238850	35402	12.9	273217	238895	34322	12.6	275550	252844	22706	8.2
MIAMI-FT. LAUDERDALE-POMPANO BEACH (Broward, Miami-Dade, and Palm Beach)	2857874	2554977	302897	10.6	2871308	2554636	316672	11.0	2858094	2668357	189737	6.6
Ft. Lauderdale-Pompano Beach-Deerfield Beach Metropolitan Division (Broward)	1002039	900950	101089	10.1	1003017	905394	97623	9.7	1013155	947518	65637	6.5
Miami-Miami Beach-Kendall Metropolitan Division (Miami-Dade)	1226918	1098429	128489	10.5	1242228	1095203	147025	11.8	1214031	1139072	74959	6.2
West Palm Beach-Boca Raton-Boynton Beach Metropolitan Division (Palm Beach)	628917	555598	73319	11.7	626063	554039	72024	11.5	630908	581767	49141	7.8
NAPLES-MARCO ISLAND (Collier)	146650	128588	18062	12.3	144816	126637	18179	12.6	152761	140742	12019	7.9
OCALA (Marion)	139170	119868	19302	13.9	138847	120194	18653	13.4	140675	127182	13493	9.6
ORLANDO-KISSIMMEE (Lake, Orange, Osceola, and Seminole)	1110095	978744	131351	11.8	1114498	986714	127784	11.5	1123800	1040765	83035	7.4
PALM BAY-MELBOURNE-TITUSVILLE (Brevard)	265566	233892	31674	11.9	265215	234849	30366	11.4	266808	245539	21269	8.0
PALM COAST (Flagler)	31278	26023	5255	16.8	31180	26138	5042	16.2	32129	28552	3577	11.1
PANAMA CITY-LYNN HAVEN-PANAMA CITY BEACH (Bay)	86849	77528	9321	10.7	87456	79064	8392	9.6	88244	81793	6451	7.3
PENSACOLA-FERRY PASS-BRENT (Escambia and Santa Rosa)	209547	187397	22150	10.6	208637	188264	20373	9.8	210422	195910	14512	6.9
PORT ST. LUCIE (Martin and St. Lucie)	188803	162551	26252	13.9	187996	162034	25962	13.8	187598	169342	18256	9.7
PUNTA GORDA (Charlotte)	68839	59881	8958	13.0	68697	59944	8753	12.7	69187	62598	6589	9.5
SEBASTIAN-VERO BEACH (Indian River)	60763	51865	8898	14.6	60807	51730	9077	14.9	61800	55957	5843	9.5
TALLAHASSEE (Gadsden, Jefferson, Leon, and Wakulla)	190545	175021	15524	8.1	190056	175786	14270	7.5	192767	182391	10376	5.4
TAMPA-ST. PETERSBURG-CLEARWATER (Hernando, Hillsborough, Pasco, and Pinellas)	1313865	1152815	161050	12.3	1311743	1157219	154524	11.8	1331508	1226101	105407	7.9
FLORIDA												
NOT SEASONALLY ADJUSTED	9195000	8142000	1053000	11.5	9200000	8161000	1039000	11.3	9264000	8580000	684000	7.4
SEASONALLY ADJUSTED	9202000	8146000	1056000	11.5	9183000	8148000	1035000	11.3	9316000	8641000	675000	7.2
UNITED STATES												
NOT SEASONALLY ADJUSTED	153539000	139132000	14407000	9.4	153635000	139088000	14547000	9.5	154624000	144609000	10015000	6.5
SEASONALLY ADJUSTED	153877000	138502000	15375000	10.0	153975000	138275000	15700000	10.2	154620000	144144000	10476000	6.8

RELEASED DECEMBER 18, 2009

NOTE: Items may not add to totals or compute to displayed percentages due to rounding. All data are subject to revis

STATE OF FLORIDA
COUNTIES RANKED BY UNEMPLOYMENT RATE
(NOT SEASONALLY ADJUSTED)

NOVEMBER 2009
(PRELIMINARY)

RELEASED 12/18/2009

UNEMPLOYMENT			UNEMPLOYMENT		
RANK	COUNTY	RATE (%)	RANK	COUNTY	RATE (%)
1	FLAGLER	16.8	35	DESOTO	11.3
2	HENDRY	14.9	36	WASHINGTON	11.0
3	HERNANDO	14.7	37	SEMINOLE	10.9
4	ST. LUCIE	14.7	38	SUWANNEE	10.9
5	INDIAN RIVER	14.6	39	NASSAU	10.9
6	LEE	13.9	40	ESCAMBIA	10.9
7	MARION	13.9	41	BAY	10.7
8	OKEECHOBEE	13.5	42	GULF	10.5
9	OSCEOLA	13.3	43	COLUMBIA	10.5
10	PASCO	13.2	44	MIAMI-DADE	10.5
11	DIXIE	13.1	45	GILCHRIST	10.5
12	CHARLOTTE	13.0	46	CLAY	10.4
13	MADISON	13.0	47	GADSDEN	10.1
14	MANATEE	12.9	48	BROWARD	10.1
15	POLK	12.9	49	SANTA ROSA	9.9
16	PUTNAM	12.8	50	GLADES	9.8
17	LAKE	12.7	51	SUMTER	9.7
18	CITRUS	12.6	52	ST. JOHNS	9.7
19	HAMILTON	12.4		UNITED STATES	9.4
20	MARTIN	12.4	53	UNION	9.3
21	VOLUSIA	12.3	54	CALHOUN	9.3
22	LEVY	12.3	55	JEFFERSON	8.9
23	COLLIER	12.3	56	BRADFORD	8.9
24	SARASOTA	12.3	57	FRANKLIN	8.8
25	HARDEE	12.2	58	LAFAYETTE	8.4
26	HILLSBOROUGH	12.1	59	OKALOOSA	8.1
27	BREVARD	11.9	60	HOLMES	8.1
28	DUVAL	11.7	61	WALTON	7.9
29	PINELLAS	11.7	62	LEON	7.9
30	HIGHLANDS	11.7	63	ALACHUA	7.9
31	ORANGE	11.7	64	WAKULLA	7.8
32	PALM BEACH	11.7	65	JACKSON	7.8
33	BAKER	11.6	66	MONROE	7.3
	FLORIDA	11.5	67	LIBERTY	6.1
34	TAYLOR	11.3			

NOTE: All data are subject to revision.

Source: Florida Agency for Workforce Innovation, Labor Market Statistics Center, Local Area Unemployment Statistics Program, in cooperation with the U.S. Department of Labor, Bureau of Labor Statistics.

STATE OF FLORIDA
 METROPOLITAN STATISTICAL AREAS (MSAs) AND METROPOLITAN DIVISIONS (MDs)
 RANKED BY UNEMPLOYMENT RATE
 (NOT SEASONALLY ADJUSTED)
 NOVEMBER 2009 (Preliminary)

1. Palm Coast MSA	16.8 %
2. Sebastian-Vero Beach MSA	14.6
3. Cape Coral-Ft. Myers MSA	13.9
4. Port St. Lucie MSA	13.9
5. Ocala MSA	13.9
6. Punta Gorda MSA	13.0
7. Lakeland-Winter Haven MSA	12.9
8. Bradenton-Sarasota-Venice MSA	12.6
9. Deltona-Daytona Beach-Ormond Beach MSA	12.3
10. Naples-Marco Island MSA	12.3
11. Tampa-St. Petersburg-Clearwater MSA	12.3
12. Palm Bay-Melbourne-Titusville MSA	11.9
13. Orlando-Kissimmee MSA	11.8
14. West Palm Beach-Boca Raton-Boynton Beach MD	11.7
Florida	11.5
15. Jacksonville MSA	11.2
16. Panama City-Lynn Haven-Panama City Beach MSA	10.7
17. Miami-Ft. Lauderdale-Pompano Beach MSA	10.6
18. Pensacola-Ferry Pass-Brent MSA	10.6
19. Miami-Miami Beach-Kendall MD	10.5
20. Ft. Lauderdale-Pompano Beach-Deerfield Beach MD	10.1
United States	9.4
21. Tallahassee MSA	8.1
22. Ft. Walton Beach-Crestview-Destin MSA	8.1
23. Gainesville MSA	8.0

Released December 18, 2009

NOTE: All data are subject to revision.

Source: Florida Agency for Workforce Innovation, Labor Market Statistics Center, Local Area Unemployment Statistics Program, in cooperation with the U.S. Department of Labor, Bureau of Labor Statistics.

TOTAL NONAGRICULTURAL EMPLOYMENT
FLORIDA (Not Seasonally Adjusted)

Area	November 2009	October 2009	November 2008	Over-the-Month Change		Over-the-Year Change	
				Level	Percent	Level	Percent
Statewide	7,364,200	7,342,200	7,650,700	+22,000	+0.3%	-286,500	-3.7%
Bradenton-Sarasota-Venice MSA	249,100	248,200	264,000	+900	+0.4%	-14,900	-5.6%
Cape Coral-Ft. Myers MSA	195,500	194,800	208,900	+700	+0.4%	-13,400	-6.4%
Deltona-Daytona Beach-Ormond Beach MSA	158,700	158,500	163,300	+200	+0.1%	-4,600	-2.8%
Ft. Lauderdale-Pompano Beach-Deerfield Beach MD	738,100	737,200	762,900	+900	+0.1%	-24,800	-3.3%
Ft. Walton Beach-Crestview-Destin MSA	78,800	78,900	81,200	-100	-0.1%	-2,400	-3.0%
Gainesville MSA	132,500	132,600	135,900	-100	-0.1%	-3,400	-2.5%
Jacksonville MSA	594,500	592,200	614,600	+2,300	+0.4%	-20,100	-3.3%
Lakeland-Winter Haven MSA	199,200	198,100	206,900	+1,100	+0.6%	-7,700	-3.7%
Miami-Ft. Lauderdale-Pompano Beach MSA	2,280,500	2,269,400	2,345,600	+11,100	+0.5%	-65,100	-2.8%
Miami-Miami Beach-Kendall MD	1,018,700	1,013,100	1,043,100	+5,600	+0.6%	-24,400	-2.3%
Naples-Marco Island MSA	114,500	112,400	123,800	+2,100	+1.9%	-9,300	-7.5%
Ocala MSA	97,500	97,000	101,800	+500	+0.5%	-4,300	-4.2%
Orlando-Kissimmee MSA	1,018,500	1,019,100	1,062,500	-600	-0.1%	-44,000	-4.1%
Palm Bay-Melbourne-Titusville MSA	197,200	196,700	203,200	+500	+0.3%	-6,000	-3.0%
Palm Coast MSA	16,900	16,900	18,200	+0	+0.0%	-1,300	-7.1%
Panama City-Lynn Haven-Panama City Beach MSA	71,200	72,000	73,900	-800	-1.1%	-2,700	-3.7%
Pensacola-Ferry Pass-Brent MSA	161,000	160,800	165,600	+200	+0.1%	-4,600	-2.8%
Port St. Lucie MSA	122,400	121,500	125,100	+900	+0.7%	-2,700	-2.2%
Punta Gorda MSA	40,600	40,300	41,900	+300	+0.7%	-1,300	-3.1%
Sebastian-Vero Beach MSA	43,200	43,300	46,300	-100	-0.2%	-3,100	-6.7%
Tallahassee MSA	173,300	172,800	177,100	+500	+0.3%	-3,800	-2.1%
Tampa-St. Petersburg-Clearwater MSA	1,159,700	1,156,200	1,211,600	+3,500	+0.3%	-51,900	-4.3%
West Palm Beach-Boca Raton-Boynton Beach MD	523,700	519,100	539,600	+4,600	+0.9%	-15,900	-2.9%

Note: Employment estimates have been rounded to the nearest hundred. Sum of detail may not equal totals due to rounding or the exclusion of certain industries from publication. All data are subject to revision. Released December 18, 2009.