



Charlie Crist
Governor
Cynthia Lorenzo
Interim Director

FOR IMMEDIATE RELEASE
EMBARGOED: March 6, 2009, 10:00AM

CONTACT: Robby Cunningham
(850) 245-7130

Florida's January Employment Figures Released

NOTE TO EDITORS: Every March, the U.S. Department of Labor, Bureau of Labor Statistics and the Florida Agency for Workforce Innovation release January employment and unemployment estimates as well as revised historical data. Today's report is the result of that annual process, which is known as "benchmarking." Benchmark revisions are a standard part of the estimation process and take place this same time every year in each state utilizing tax records filed by nearly all employers. As a result of this annual benchmarking process, the release of January and February 2009 employment data is scheduled for March 6 and March 27, respectively.

TALLAHASSEE – Florida's seasonally adjusted unemployment rate for January 2009 is 8.6 percent. This represents 800,000 jobless out of a labor force of 9,256,000. The unemployment rate is 1.0 percentage point higher than the revised December rate of 7.6 percent and is up 3.6 percentage points from the January 2008 rate. The state's current unemployment rate is 1.0 percentage point higher than the national unemployment rate of 7.6 percent.

Florida's January 2009 unemployment rate is the highest since September 1992, when the rate was 8.9 percent. Prior to 1992, the seasonally adjusted unemployment rate for Florida using the current methodology peaked at 9.7 percent in January, February, and March of 1976. A different methodology was used to calculate unemployment rates prior to 1976; during that time, the rate reached a high of 11.9 percent in May 1975.

Florida's total nonagricultural employment in January 2009 is 7,557,700, representing a job loss of 355,700, or -4.5 percent compared to January 2008. This is slower than the national rate for January which is -2.5 percent. The January 2009 rate of job loss continues the trend of over-the-year declines that began in August 2007 primarily due to declines in construction jobs.

Floridians are encouraged to utilize Employ Florida Marketplace, the state's powerful online labor exchange tool that provides employers, job seekers, students, training providers and workforce professionals with comprehensive and convenient workforce services at no cost. Employers can post job openings and job seekers can post resumes at www.employflorida.com. Employ Florida Marketplace currently lists nearly 130,000 job opportunities in Florida.

"Governor Crist has emphasized job creation and stimulating Florida's economy by developing budget priorities that focus on these principles and translate federal stimulus dollars into action," said Agency Interim Director Cynthia R. Lorenzo. "We are working diligently to ensure federal stimulus funds are distributed quickly to have significant impact on increasing benefits and enhancing our services to Floridians. We are also working diligently to ensure our state and business partners are posting job openings on the Employ Florida Marketplace website."

Governor Crist and Lt. Governor Kottkamp last month unveiled their budget priorities for Fiscal Year 2009-10 as well as recommendations for the use of American Recovery and Reinvestment Act funds. The Governor's recommendations will enhance efforts to expand services for Florida's Unemployment Compensation recipients, ensure educational success for Florida's children through quality early learning programs and keep Florida's workforce competitive. According to information released by the White House, the economic stimulus funding will create or retain 206,000 jobs in Florida over three years.

The Governor's recommendations include:

Keeping Florida's workforce competitive - Governor Crist recommends using nearly \$77.8 million in American Recovery and Reinvestment Act funds in Fiscal Year 2009-2010 to match job seekers with Florida

businesses and train workers for opportunities created by the federal stimulus package. This recommendation includes nearly \$37 million to assist dislocated workers and \$21 million for youth work programs.

The Governor's recommendations also include the immediate infusion of nearly \$81 million in federal stimulus funds for the current fiscal year, 2008-2009, to match job seekers with Florida businesses and train workers for opportunities created by the federal stimulus package.

Helping working families stay in the workforce and ensuring educational success of Florida's children

– The Governor's budget proposal includes increased funding for the state's free Voluntary Prekindergarten (VPK) program, now in its fourth year. The Governor is requesting an additional \$22.7 million to maintain the current per-student allocation for the anticipated growth in enrollment.

Governor Crist has also requested \$3 million to restore funding for Florida's School Readiness Program. The restoration of funding will allow Florida to qualify for \$105 million in federal stimulus funds for eligible parents to receive state-assisted quality child care so they can work. Governor Crist recommends using \$51.6 million of the \$105 million for these school readiness services in Fiscal Year 2009-2010, and an immediate infusion of \$53.7 million for school readiness services in Fiscal Year 2008-2009. School Readiness, which creates one job for every 12 children served, is expected to create or retain nearly 15,000 jobs for the child-care providers that allow families to remain in the workforce and achieve financial self-sufficiency.

Enhancing Services for Florida's Unemployment Compensation Recipients - Governor Crist signed an agreement with the U.S. Department of Labor to increase weekly unemployment benefits by \$25 per week. The agreement is expected to bring an additional \$345 million to Florida during the 2009 calendar year. The additional \$25 per week will be received automatically by eligible recipients and was effective February 22. Claimants will begin receiving the additional \$25 by the end of March. This additional benefit is exclusively federally funded and does not obligate state governments or employers beyond the end of the stimulus package.

In addition, Governor Crist recommends using nearly \$32 million in federal stimulus funds over the next two years for administrative and operational enhancements to meet the increased demand for the Agency's Unemployment Compensation services. Included in this proposal is a request for authorization to use \$2 million in federal funds to modernize the unemployment compensation system mainframe.

To view the Governor's proposed 2009-10 budget, please visit www.ThePeoplesBudget.state.fl.us.

Florida's workforce system provides critical programs and services to job seekers and businesses alike. Such services offered throughout the state include:

- **One-Stop Career Centers** – Florida's nearly 90 One-Stop Career Centers, locally operated by Regional Workforce Boards, provide local access to job placement services, local workforce information and job training opportunities. Follow this link for a [Map of Florida One-Stop Career Centers](http://www.floridajobs.org/onestop/onestopdir/index.htm). (<http://www.floridajobs.org/onestop/onestopdir/index.htm>)
- **Employ Florida Marketplace** - The Employ Florida Marketplace Online Job Bank provides 24/7 access to a wide variety of local, state and national job openings. Follow this link to access the [Employ Florida Marketplace](http://www.employflorida.com/). (<http://www.employflorida.com/>)
- **Mobile One-Stop Career Centers** – Florida's Mobile One-Stop Career Centers allow citizens in rural areas, at job fairs and during emergency situations to access critical workforce information and services.
- **Labor Market Information** – The Agency for Workforce Innovation's Labor Market Statistics Center produces data, such as employment, unemployment and wage information, that assist workforce/economic development, education, employers and job seekers. These statistics assist with economic analysis, business recruitment, career counseling and other critical business decision-making. Follow this link for information about the Agency's [Labor Market Statistics Center](http://www.labormarketinfo.com/). (<http://www.labormarketinfo.com/>.)
- **Work Opportunity Tax Credit** - The Work Opportunity Tax Credit offers a financial incentive to private, for-profit employers to hire individuals from certain targeted groups, who experience high rates of unemployment due to a variety of employment barriers. Follow this link for information about the [Work Opportunity Tax Credit](http://www.floridajobs.org/workforce/wotc.html). (<http://www.floridajobs.org/workforce/wotc.html>)

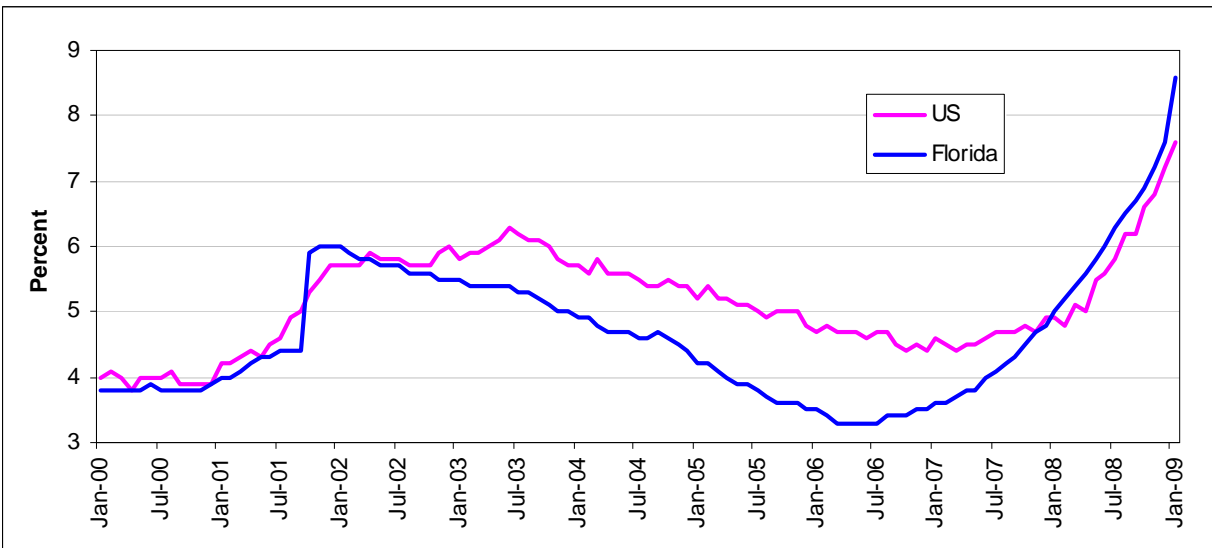
Agency for Workforce Innovation

The Caldwell Building, Suite 100•107 East Madison Street•Tallahassee, Florida•32399-4120
Telephone (850) 245-7105•Fax (850) 921-3223•TTY/TDD 1-800-955-8771-Voice 1-800-955-8770

www.floridajobs.org

For more information on these and other Agency for Workforce Innovation programs, go to www.FloridaJobs.org.

United States and Florida Unemployment Rates (seasonally adjusted)



Source: Florida Agency for Workforce Innovation, Labor Market Statistics Center, Local Area Unemployment Statistics Program, in cooperation with the U.S. Department of Labor, Bureau of Labor Statistics.

Florida's Nonagricultural Employment by Industry (Seasonally Adjusted)

- The number of jobs in Florida is down 355,700 in January 2009 compared to a year ago. Construction, reacting to continued declines in the housing market, lost 100,700 jobs over the year (-17.9 percent). Construction losses account for over 26 percent of job losses in the state.
- Trade, transportation, and utilities (-86,400 jobs, -5.3 percent); professional and business services (-84,500 jobs, -7.2 percent); leisure and hospitality (-37,600 jobs, -3.9 percent); manufacturing (-30,800 jobs, -8.0 percent); financial activities (-19,000 jobs, -3.5 percent); other services (-13,100 jobs, -3.8 percent); and information (-10,900 jobs, -6.8 percent) have over-the-year declines.
- These industry job losses are partially due to weakness in specialty trade contractors; motor vehicle and parts dealers; employment services; food services and drinking places; fabricated metal product manufacturing; credit intermediation; repair and maintenance; and publishing.
- Education and health services (+23,500 jobs, +2.3 percent) and total government (+4,100 jobs, +0.4 percent) are the only sectors gaining jobs among Florida's major industries. Much of the increase in education and health services is due to growth in nursing and residential care facilities. Much of the increase in total government is due to shifting seasonal patterns in state universities employment.

Local Area Unemployment Statistics (Not Seasonally Adjusted)

- In January 2009, Liberty County has the state's lowest unemployment rate (5.5 percent), followed by Alachua County (5.8 percent); Monroe County (5.9 percent); Leon County (6.0 percent); and Union County (6.3 percent).
- Flagler County, at 14.2 percent, has the highest unemployment rate in Florida in January, followed by Hernando County (12.4 percent); Hamilton and St. Lucie counties (12.0 percent); Marion County (11.6 percent); and Lee County (11.5 percent). Flagler County's high unemployment rate is mainly due to manufacturing layoffs and continued weakness in construction. There were 20 Florida counties with double-digit unemployment rates in January 2009.

Agency for Workforce Innovation

The Caldwell Building, Suite 100•107 East Madison Street•Tallahassee, Florida•32399-4120
Telephone (850) 245-7105•Fax (850) 921-3223•TTY/TDD 1-800-955-8771-Voice 1-800-955-8770

www.floridajobs.org

Area Nonagricultural Employment by Industry (Not Seasonally Adjusted)

- All metro areas in the state lost jobs over the year in January 2009. Metro areas with the largest annual declines include Miami-Ft. Lauderdale-Pompano Beach (-80,800 jobs, -3.4 percent); Tampa-St. Petersburg-Clearwater (-42,200 jobs, -3.4 percent); and Orlando-Kissimmee (-41,800, -3.8 percent). Cape Coral-Ft. Myers MSA has the highest rate of job loss, at -9.1 percent over the year.
- Metro areas with the smallest annual declines include Ft. Walton Beach-Crestview-Destin (-1,100 jobs, -1.4 percent) and Panama City-Lynn Haven-Panama City Beach (-1,600 jobs, -2.2. percent). Gainesville MSA has the smallest rate of job decline, at -1.3 percent over the year.

Note: These unemployment and job growth rates are estimates, which are primarily based on surveys created and mandated by the US Bureau of Labor Statistics in cooperation with the Florida Agency for Workforce Innovation.

The unemployment rate is derived from Florida household surveys conducted by the US Census Bureau under contract with the US Bureau of Labor Statistics. The job growth rate is derived from Florida employer surveys conducted by the US Bureau of Labor Statistics.

Both estimates are revised on a monthly basis. In addition, these estimates are benchmarked (revised) annually based on actual counts from Florida's Unemployment Compensation tax records and other data.

###

An equal opportunity employer/program. Auxiliary aids and services are available upon request to individuals with disabilities. All voice telephone numbers on this document may be reached by persons using TTY/TDD equipment via the Florida Relay Service at 711.

The Agency for Workforce Innovation is Florida's lead workforce agency and directly administers the state's various workforce and unemployment programs and the Office of Early Learning. Workforce development policy and guidance are provided by Workforce Florida, Inc. Partnering together, along with the state's 24 Regional Workforce Boards that deliver services through nearly 90 One-Stop Career Centers around the state, they compose the Employ Florida network.

The next Florida Employment and Unemployment release will be on March 27, 2009 at 10:00 A.M.

Agency for Workforce Innovation

The Caldwell Building, Suite 100•107 East Madison Street•Tallahassee, Florida•32399-4120
Telephone (850) 245-7105•Fax (850) 921-3223•TTY/TDD 1-800-955-8771-Voice 1-800-955-8770

www.floridajobs.org

LABOR FORCE STATUS OF THE CIVILIAN NONINSTITUTIONAL POPULATION
RELEASE DATE: MARCH 6, 2009

SEASONALLY ADJUSTED

	Current Month January 2009	Month Ago December 2008	Year Ago January 2008	Over-the-Month Change		Over-the-Year Change	
				Level	Percent	Level	Percent
	STATE OF FLORIDA						
Civilian Noninstitutional							
Population 16+	14,519,000	14,511,000	14,399,000	8,000	0.1	120,000	0.8
Civilian Labor Force	9,256,000	9,343,000	9,155,000	-87,000	-0.9	101,000	1.1
Employment	8,456,000	8,634,000	8,698,000	-178,000	-2.1	-242,000	-2.8
Unemployment	800,000	709,000	457,000	91,000	12.8	343,000	75.1
Unemployment Rate (%)	8.6	7.6	5.0	1.0	--	3.6	--

UNITED STATES

Civilian Noninstitutional							
Population 16+	234,739,000	235,035,000	232,616,000	-296,000	-0.1	2,123,000	0.9
Civilian Labor Force	153,716,000	154,447,000	153,873,000	-731,000	-0.5	-157,000	-0.1
Employment	142,099,000	143,338,000	146,317,000	-1,239,000	-0.9	-4,218,000	-2.9
Unemployment	11,616,000	11,108,000	7,555,000	508,000	4.6	4,061,000	53.8
Unemployment Rate (%)	7.6	7.2	4.9	0.4	--	2.7	--

NOT SEASONALLY ADJUSTED

	Current Month January 2009	Month Ago December 2008	Year Ago January 2008	Over-the-Month Change		Over-the-Year Change	
				Level	Percent	Level	Percent
	STATE OF FLORIDA						
Civilian Noninstitutional							
Population 16+	14,519,000	14,511,000	14,399,000	8,000	0.1	120,000	0.8
Civilian Labor Force	9,181,000	9,248,000	9,116,000	-67,000	-0.7	65,000	0.7
Employment	8,373,000	8,523,000	8,663,000	-150,000	-1.8	-290,000	-3.3
Unemployment	808,000	726,000	453,000	82,000	11.3	355,000	78.4
Unemployment Rate (%)	8.8	7.8	5.0	1.0	--	3.8	--

UNITED STATES

Civilian Noninstitutional							
Population 16+	234,739,000	235,035,000	232,616,000	-296,000	-0.1	2,123,000	0.9
Civilian Labor Force	153,445,000	154,349,000	152,828,000	-904,000	-0.6	617,000	0.4
Employment	140,436,000	143,350,000	144,607,000	-2,914,000	-2.0	-4,171,000	-2.9
Unemployment	13,009,000	10,999,000	8,221,000	2,010,000	18.3	4,788,000	58.2
Unemployment Rate (%)	8.5	7.1	5.4	1.4	--	3.1	--

Note: All estimates except unemployment rates are rounded to the nearest thousand. Items may not add to totals or compute to displayed percentages due to rounding. All data are subject to revision.

Source: Florida Agency for Workforce Innovation, Labor Market Statistics Center, Local Area Unemployment Statistics Program, in cooperation with the U.S Department of Labor, Bureau of Labor Statistics.

Nonagricultural Employment in Florida
Seasonally Adjusted (in thousands)

	January ^p 2009	December ^r 2008	January 2008	Over-the-Month Change Level Percent		Over-the-Year Change Level Percent	
Total Nonagricultural Employment	7,557.7	7,576.1	7,913.4	-18.4	-0.2	-355.7	-4.5
Construction	463.1	465.0	563.8	-1.9	-0.4	-100.7	-17.9
Manufacturing	355.4	357.7	386.2	-2.3	-0.6	-30.8	-8.0
Trade, Transportation, and Utilities	1,530.1	1,518.7	1,616.5	11.4	0.8	-86.4	-5.3
Wholesale Trade	342.5	343.1	353.1	-0.6	-0.2	-10.6	-3.0
Retail Trade	953.7	944.5	1,012.4	9.2	1.0	-58.7	-5.8
Transportation, Warehousing, and Utilities	233.9	231.1	251.0	2.8	1.2	-17.1	-6.8
Information	149.2	149.8	160.1	-0.6	-0.4	-10.9	-6.8
Financial Activities	519.1	519.0	538.1	0.1	*	-19.0	-3.5
Finance and Insurance	345.5	347.3	361.8	-1.8	-0.5	-16.3	-4.5
Real Estate, Rental, and Leasing	173.6	171.7	176.3	1.9	1.1	-2.7	-1.5
Professional and Business Services	1,086.2	1,120.4	1,170.7	-34.2	-3.1	-84.5	-7.2
Professional and Technical Services	441.0	447.2	463.9	-6.2	-1.4	-22.9	-4.9
Management of Companies and Enterprises	80.6	80.9	82.0	-0.3	-0.4	-1.4	-1.7
Administrative and Waste Services	564.6	592.3	624.8	-27.7	-4.7	-60.2	-9.6
Education and Health Services	1,063.3	1,060.2	1,039.8	3.1	0.3	23.5	2.3
Educational Services	140.8	140.5	136.4	0.3	0.2	4.4	3.2
Health Care and Social Assistance	922.5	919.7	903.4	2.8	0.3	19.1	2.1
Leisure and Hospitality	919.4	920.0	957.0	-0.6	-0.1	-37.6	-3.9
Arts, Entertainment, and Recreation	177.6	178.8	185.3	-1.2	-0.7	-7.7	-4.2
Accommodation and Food Services	741.8	741.2	771.7	0.6	0.1	-29.9	-3.9
Other Services	331.8	334.8	344.9	-3.0	-0.9	-13.1	-3.8
Total Government	1,133.8	1,124.2	1,129.7	9.6	0.9	4.1	0.4
Local Government	787.3	783.6	785.2	3.7	0.5	2.1	0.3

^p = preliminary, ^r = revised

* = less than 0.1

Note: Sum of detail may not equal totals due to rounding or the exclusion of certain industries from publication. All data are subject to revision.

Released March 06, 2009.

Source: Florida Agency for Workforce Innovation, Labor Market Statistics Center, Current Employment Statistics Program in cooperation with the U.S. Department of Labor, Bureau of Labor Statistics.

**NONAGRICULTURAL EMPLOYMENT IN FLORIDA
STATEWIDE (Not Seasonally Adjusted)**

Released March 06, 2009

Industry Title	January 2009	December 2008	January 2008	Change from			
				Dec 2008 to Jan 2009 Level	Percent	Jan 2008 to Jan 2009 Level	Percent
Total Nonagricultural Employment	7,530,100	7,656,900	7,871,800	-126,800	-1.7%	-341,700	-4.3%
Total Private	6,384,800	6,510,500	6,731,500	-125,700	-1.9%	-346,700	-5.2%
Goods Producing	819,700	832,000	940,900	-12,300	-1.5%	-121,200	-12.9%
Mining and Logging	6,300	6,300	6,600	0	0.0%	-300	-4.5%
Mining, except Oil and Gas	3,700	3,800	4,100	-100	-2.6%	-400	-9.8%
Construction	459,300	467,200	550,100	-7,900	-1.7%	-90,800	-16.5%
Construction of Buildings	97,900	97,900	113,600	0	0.0%	-15,700	-13.8%
Heavy and Civil Engineering Construction	60,600	62,400	71,000	-1,800	-2.9%	-10,400	-14.6%
Specialty Trade Contractors	300,800	306,900	365,500	-6,100	-2.0%	-64,700	-17.7%
Building Equipment Contractors	128,000	129,800	151,500	-1,800	-1.4%	-23,500	-15.5%
Manufacturing	354,100	358,500	384,200	-4,400	-1.2%	-30,100	-7.8%
Durable Goods	238,600	242,700	258,000	-4,100	-1.7%	-19,400	-7.5%
Fabricated Metal Product Manufacturing	34,900	36,300	39,300	-1,400	-3.9%	-4,400	-11.2%
Computer and Electronic Product Manufacturing	47,000	47,400	48,600	-400	-0.8%	-1,600	-3.3%
Communications Equipment Manufacturing	8,100	8,400	8,600	-300	-3.6%	-500	-5.8%
Transportation Equipment Manufacturing	41,200	41,300	43,600	-100	-0.2%	-2,400	-5.5%
Aerospace Product and Parts Manufacturing	20,200	20,200	19,800	0	0.0%	400	2.0%
Miscellaneous Durable Goods Manufacturing	29,600	29,800	30,600	-200	-0.7%	-1,000	-3.3%
Nondurable Goods	115,500	115,800	126,200	-300	-0.3%	-10,700	-8.5%
Food Manufacturing	28,100	28,500	31,400	-400	-1.4%	-3,300	-10.5%
Beverage and Tobacco Product Manufacturing	10,800	10,800	11,000	0	0.0%	-200	-1.8%
Paper Manufacturing	9,900	9,800	10,200	100	1.0%	-300	-2.9%
Printing and Related Support Activities	19,900	20,300	23,300	-400	-2.0%	-3,400	-14.6%
Chemical Manufacturing	19,700	20,100	20,600	-400	-2.0%	-900	-4.4%

Source: Florida Agency for Workforce Innovation, Labor Market Statistics Center, Current Employment Statistics Program (in cooperation with the U.S. Department of Labor, Bureau of Labor Statistics).

**NONAGRICULTURAL EMPLOYMENT IN FLORIDA
STATEWIDE (Not Seasonally Adjusted)**

Released March 06, 2009

Industry Title	January 2009	December 2008	January 2008	Change from			
				Dec 2008 to Jan 2009 Level	Percent	Jan 2008 to Jan 2009 Level	Percent
Service Providing	6,710,400	6,824,900	6,930,900	-114,500	-1.7%	-220,500	-3.2%
Private Service Providing	5,565,100	5,678,500	5,790,600	-113,400	-2.0%	-225,500	-3.9%
Trade, Transportation, and Utilities	1,527,200	1,564,600	1,615,900	-37,400	-2.4%	-88,700	-5.5%
Wholesale Trade	340,500	344,300	351,900	-3,800	-1.1%	-11,400	-3.2%
Merchant Wholesalers, Durable Goods	176,900	176,700	184,200	200	0.1%	-7,300	-4.0%
Commercial Equipment Wholesalers	47,200	46,900	47,600	300	0.6%	-400	-0.8%
Electronic Goods Wholesalers	23,200	23,600	23,700	-400	-1.7%	-500	-2.1%
Machinery and Supply Wholesalers	31,800	32,300	33,300	-500	-1.5%	-1,500	-4.5%
Merchant Wholesalers, Nondurable Goods	118,500	121,500	122,800	-3,000	-2.5%	-4,300	-3.5%
Grocery and Related Product Wholesalers	44,700	44,700	46,200	0	0.0%	-1,500	-3.2%
Wholesale Electronic Markets and Agents	45,100	46,100	44,900	-1,000	-2.2%	200	0.4%
Retail Trade	953,500	983,100	1,013,900	-29,600	-3.0%	-60,400	-6.0%
Motor Vehicle and Parts Dealers	115,200	118,000	132,700	-2,800	-2.4%	-17,500	-13.2%
Automobile Dealers	73,800	75,400	86,100	-1,600	-2.1%	-12,300	-14.3%
Furniture and Home Furnishings Stores	37,300	38,300	43,400	-1,000	-2.6%	-6,100	-14.1%
Electronics and Appliance Stores	36,300	37,200	37,800	-900	-2.4%	-1,500	-4.0%
Building Material and Garden Supply Stores	71,100	72,100	78,200	-1,000	-1.4%	-7,100	-9.1%
Food and Beverage Stores	192,700	193,400	197,500	-700	-0.4%	-4,800	-2.4%
Health and Personal Care Stores	71,300	72,300	72,700	-1,000	-1.4%	-1,400	-1.9%
Gasoline Stations	36,400	36,500	38,900	-100	-0.3%	-2,500	-6.4%
Clothing and Accessory Stores	105,300	112,600	110,200	-7,300	-6.5%	-4,900	-4.4%
Sporting Goods, Hobby, Book, and Music Stores	34,900	37,000	37,300	-2,100	-5.7%	-2,400	-6.4%
General Merchandise Stores	180,800	192,300	189,400	-11,500	-6.0%	-8,600	-4.5%
Department Stores	79,800	86,500	86,900	-6,700	-7.7%	-7,100	-8.2%
Other General Merchandise Stores	101,000	105,800	102,500	-4,800	-4.5%	-1,500	-1.5%
Miscellaneous Store Retailers	49,700	50,900	52,700	-1,200	-2.4%	-3,000	-5.7%
Nonstore Retailers	22,500	22,500	23,100	0	0.0%	-600	-2.6%
Electronic Shopping and Mail-Order Houses	14,700	14,700	14,600	0	0.0%	100	0.7%
Transportation, Warehousing, and Utilities	233,200	237,200	250,100	-4,000	-1.7%	-16,900	-6.8%
Utilities	23,700	23,900	23,600	-200	-0.8%	100	0.4%

Source: Florida Agency for Workforce Innovation, Labor Market Statistics Center, Current Employment Statistics Program (in cooperation with the U.S. Department of Labor, Bureau of Labor Statistics).

**NONAGRICULTURAL EMPLOYMENT IN FLORIDA
STATEWIDE (Not Seasonally Adjusted)**

Released March 06, 2009

Industry Title	January 2009	December 2008	January 2008	Change from			
				Dec 2008 to Jan 2009 Level	Percent	Jan 2008 to Jan 2009 Level	Percent
Transportation and Warehousing	209,500	213,300	226,500	-3,800	-1.8%	-17,000	-7.5%
Air Transportation	30,400	30,300	31,800	100	0.3%	-1,400	-4.4%
Water Transportation	12,200	12,400	12,700	-200	-1.6%	-500	-3.9%
Truck Transportation	41,600	43,300	47,700	-1,700	-3.9%	-6,100	-12.8%
Support Activities for Transportation	45,200	46,400	50,600	-1,200	-2.6%	-5,400	-10.7%
Couriers and Messengers	29,900	31,400	31,200	-1,500	-4.8%	-1,300	-4.2%
Warehousing and Storage	27,700	28,100	28,900	-400	-1.4%	-1,200	-4.2%
Information	148,800	150,400	158,700	-1,600	-1.1%	-9,900	-6.2%
Publishing Industries, except Internet	37,900	38,100	42,300	-200	-0.5%	-4,400	-10.4%
Broadcasting, except Internet	14,700	15,000	15,800	-300	-2.0%	-1,100	-7.0%
Telecommunications	63,000	63,400	65,600	-400	-0.6%	-2,600	-4.0%
Wired Telecommunications Carriers	45,500	45,600	48,400	-100	-0.2%	-2,900	-6.0%
Internet Service Providers and Data Processing	16,800	17,100	17,500	-300	-1.8%	-700	-4.0%
Financial Activities	514,800	519,400	533,400	-4,600	-0.9%	-18,600	-3.5%
Finance and Insurance	342,800	346,800	359,500	-4,000	-1.2%	-16,700	-4.6%
Credit Intermediation and Related Activities	164,100	166,100	177,600	-2,000	-1.2%	-13,500	-7.6%
Depository Credit Intermediation	101,900	102,300	105,400	-400	-0.4%	-3,500	-3.3%
Insurance Carriers and Related Activities	132,700	134,100	136,100	-1,400	-1.0%	-3,400	-2.5%
Insurance Carriers	73,300	73,400	73,500	-100	-0.1%	-200	-0.3%
Insurance Agencies, Brokerages, and Related	59,400	60,700	62,600	-1,300	-2.1%	-3,200	-5.1%
Real Estate, Rental, and Leasing	172,000	172,600	173,900	-600	-0.3%	-1,900	-1.1%
Real Estate	127,000	127,300	127,200	-300	-0.2%	-200	-0.2%
Professional and Business Services	1,080,400	1,127,000	1,158,000	-46,600	-4.1%	-77,600	-6.7%
Professional and Technical Services	440,900	449,400	463,900	-8,500	-1.9%	-23,000	-5.0%
Legal Services	88,200	91,200	90,000	-3,000	-3.3%	-1,800	-2.0%
Accounting, Tax Preparation, and Bookkeeping	55,600	54,400	65,000	1,200	2.2%	-9,400	-14.5%
Architectural, Engineering, and Related	77,300	79,400	89,100	-2,100	-2.6%	-11,800	-13.2%
Computer Systems Design and Related	64,000	65,700	62,100	-1,700	-2.6%	1,900	3.1%
Management, Scientific, and Technical	69,400	70,300	67,700	-900	-1.3%	1,700	2.5%
Management of Companies and Enterprises	80,200	81,000	81,900	-800	-1.0%	-1,700	-2.1%

Source: Florida Agency for Workforce Innovation, Labor Market Statistics Center, Current Employment Statistics Program (in cooperation with the U.S. Department of Labor, Bureau of Labor Statistics).

**NONAGRICULTURAL EMPLOYMENT IN FLORIDA
STATEWIDE (Not Seasonally Adjusted)**

Released March 06, 2009

Industry Title	January 2009	December 2008	January 2008	Change from			
				Dec 2008 to Jan 2009 Level	Percent	Jan 2008 to Jan 2009 Level	Percent
Administrative and Waste Services	559,300	596,600	612,200	-37,300	-6.3%	-52,900	-8.6%
Administrative and Support Services	538,900	576,300	591,900	-37,400	-6.5%	-53,000	-9.0%
Employment Services	190,400	213,300	221,700	-22,900	-10.7%	-31,300	-14.1%
Business Support Services	65,000	66,000	66,100	-1,000	-1.5%	-1,100	-1.7%
Travel Arrangement and Reservation Services	32,100	32,400	32,600	-300	-0.9%	-500	-1.5%
Investigation and Security Services	62,700	63,300	63,500	-600	-0.9%	-800	-1.3%
Services to Buildings and Dwellings	135,000	139,000	138,400	-4,000	-2.9%	-3,400	-2.5%
Waste Management and Remediation Services	20,400	20,300	20,300	100	0.5%	100	0.5%
Education and Health Services	1,058,500	1,065,200	1,034,300	-6,700	-0.6%	24,200	2.3%
Educational Services	140,600	142,700	136,400	-2,100	-1.5%	4,200	3.1%
Elementary and Secondary Schools	47,700	48,100	46,600	-400	-0.8%	1,100	2.4%
Colleges and Universities	52,100	53,900	49,700	-1,800	-3.3%	2,400	4.8%
Health Care and Social Assistance	917,900	922,500	897,900	-4,600	-0.5%	20,000	2.2%
Ambulatory Health Care Services	375,700	379,100	372,200	-3,400	-0.9%	3,500	0.9%
Offices of Physicians	170,400	171,900	169,000	-1,500	-0.9%	1,400	0.8%
Home Health Care Services	57,000	58,100	56,400	-1,100	-1.9%	600	1.1%
Hospitals	253,600	253,400	247,000	200	0.1%	6,600	2.7%
Nursing and Residential Care Facilities	175,100	175,400	167,800	-300	-0.2%	7,300	4.4%
Nursing Care Facilities	99,200	99,000	93,100	200	0.2%	6,100	6.6%
Community Care for the Elderly	45,600	45,700	44,300	-100	-0.2%	1,300	2.9%
Social Assistance	113,500	114,600	110,900	-1,100	-1.0%	2,600	2.3%
Leisure and Hospitality	905,700	916,500	946,800	-10,800	-1.2%	-41,100	-4.3%
Arts, Entertainment, and Recreation	175,500	178,700	184,600	-3,200	-1.8%	-9,100	-4.9%
Amusement, Gambling, and Recreation	134,900	139,100	144,500	-4,200	-3.0%	-9,600	-6.6%
Amusement Parks and Arcades	52,800	55,600	55,000	-2,800	-5.0%	-2,200	-4.0%
Accommodation and Food Services	730,200	737,800	762,200	-7,600	-1.0%	-32,000	-4.2%
Accommodation	151,300	155,500	160,100	-4,200	-2.7%	-8,800	-5.5%
Food Services and Drinking Places	578,900	582,300	602,100	-3,400	-0.6%	-23,200	-3.9%

Source: Florida Agency for Workforce Innovation, Labor Market Statistics Center, Current Employment Statistics Program (in cooperation with the U.S. Department of Labor, Bureau of Labor Statistics).

**NONAGRICULTURAL EMPLOYMENT IN FLORIDA
STATEWIDE (Not Seasonally Adjusted)**

Released March 06, 2009

Industry Title	January 2009	December 2008	January 2008	Change from			
				Dec 2008 to Jan 2009 Level	Percent	Jan 2008 to Jan 2009 Level	Percent
Other Services	329,700	335,400	343,500	-5,700	-1.7%	-13,800	-4.0%
Repair and Maintenance	64,400	68,500	75,900	-4,100	-6.0%	-11,500	-15.2%
Automotive Repair and Maintenance	42,800	45,200	51,800	-2,400	-5.3%	-9,000	-17.4%
Personal and Laundry Services	85,500	85,500	84,400	0	0.0%	1,100	1.3%
Membership Associations and Organizations	179,800	181,400	183,200	-1,600	-0.9%	-3,400	-1.9%
Total Government	1,145,300	1,146,400	1,140,300	-1,100	-0.1%	5,000	0.4%
Federal	130,000	130,500	128,500	-500	-0.4%	1,500	1.2%
State	217,700	213,500	215,900	4,200	2.0%	1,800	0.8%
Local	797,600	802,400	795,900	-4,800	-0.6%	1,700	0.2%

Note: Employment estimates have been rounded to the nearest hundred. Sum of detail may not equal totals due to rounding or the exclusion of certain industries from publication. All data are subject to revision.

STATE OF FLORIDA
LOCAL AREA UNEMPLOYMENT STATISTICS BY COUNTY
(NOT SEASONALLY ADJUSTED)

COUNTY	JANUARY 2009				DECEMBER 2008				JANUARY 2008			
	LABOR FORCE	EMPLOY- MENT	UNEMPLOYMENT LEVEL	RATE (%)	LABOR FORCE	EMPLOY- MENT	UNEMPLOYMENT LEVEL	RATE (%)	LABOR FORCE	EMPLOY- MENT	UNEMPLOYMENT LEVEL	RATE (%)
ALACHUA	131599	123979	7620	5.8	132313	125605	6708	5.1	128907	124552	4355	3.4
BAKER	12001	11030	971	8.1	12066	11212	854	7.1	11875	11321	554	4.7
BAY	87388	78839	8549	9.8	88098	80214	7884	8.9	84472	80090	4382	5.2
BRADFORD	12640	11776	864	6.8	12715	11972	743	5.8	12140	11665	475	3.9
BREVARD	264809	239740	25069	9.5	265652	243242	22410	8.4	265100	250874	14226	5.4
BROWARD	998583	921841	76742	7.7	1008297	940140	68157	6.8	999938	957687	42251	4.2
CALHOUN	6062	5592	470	7.8	6005	5606	399	6.6	5640	5405	235	4.2
CHARLOTTE	69536	61865	7671	11.0	69301	62594	6707	9.7	70049	65280	4769	6.8
CITRUS	58932	52217	6715	11.4	58983	53170	5813	9.9	55721	51953	3768	6.8
CLAY	94698	86953	7745	8.2	94913	88389	6524	6.9	93414	89247	4167	4.5
COLLIER	152295	138901	13394	8.8	153272	141184	12088	7.9	154486	146681	7805	5.1
COLUMBIA	32572	30070	2502	7.7	32731	30581	2150	6.6	30828	29480	1348	4.4
DESOTO	15971	14682	1289	8.1	16031	14860	1171	7.3	15251	14496	755	5.0
DIXIE	5654	5064	590	10.4	5583	5084	499	8.9	5514	5168	346	6.3
DUVAL	445525	406221	39304	8.8	447253	412929	34324	7.7	438446	416940	21506	4.9
ESCAMBIA	140481	127630	12851	9.1	140747	129589	11158	7.9	137127	130575	6552	4.8
FLAGLER	31916	27372	4544	14.2	31708	27967	3741	11.8	30903	28353	2550	8.3
FRANKLIN	4481	4166	315	7.0	4572	4320	252	5.5	4460	4271	189	4.2
GADSDEN	21530	19387	2143	10.0	21221	19545	1676	7.9	20774	19691	1083	5.2
GILCHRIST	7908	7253	655	8.3	7925	7348	577	7.3	7629	7286	343	4.5
GLADES	5043	4651	392	7.8	5082	4711	371	7.3	4825	4593	232	4.8
GULF	6170	5630	540	8.8	6271	5753	518	8.3	6057	5740	317	5.2
HAMILTON	4684	4124	560	12.0	4946	4447	499	10.1	4630	4361	269	5.8
HARDEE	12680	11694	986	7.8	12909	12000	909	7.0	11790	11277	513	4.4
HENDRY	19686	17584	2102	10.7	19447	17468	1979	10.2	18508	17148	1360	7.3
HERNANDO	63560	55685	7875	12.4	63822	56908	6914	10.8	62179	57622	4557	7.3
HIGHLANDS	43515	39498	4017	9.2	43018	39385	3633	8.4	41380	39097	2283	5.5
HILLSBOROUGH	602147	547211	54936	9.1	607424	559229	48195	7.9	596072	566241	29831	5.0
HOLMES	9234	8537	697	7.5	9281	8700	581	6.3	8703	8333	370	4.3
INDIAN RIVER	61203	54607	6596	10.8	61614	55720	5894	9.6	62744	58831	3913	6.2
JACKSON	22374	20839	1535	6.9	22509	21118	1391	6.2	21649	20718	931	4.3
JEFFERSON	6874	6366	508	7.4	6850	6418	432	6.3	6702	6466	236	3.5
LAFAYETTE	3133	2904	229	7.3	3065	2892	173	5.6	2968	2865	103	3.5
LAKE	134817	121762	13055	9.7	136035	124577	11458	8.4	133320	126502	6818	5.1
LEE	279769	247729	32040	11.5	281695	253216	28479	10.1	290390	271688	18702	6.4
LEON	145845	137030	8815	6.0	145993	138149	7844	5.4	144228	139183	5045	3.5
LEVY	17360	15620	1740	10.0	17392	15800	1592	9.2	16576	15686	890	5.4
LIBERTY	4031	3811	220	5.5	4001	3814	187	4.7	3721	3603	118	3.2

PAGE 1 OF 2

SOURCE: Florida Agency for Workforce Innovation, Labor Market Statistics Center, Local Area Unemployment Statistics Program, in cooperation with the U.S. Department of Labor, Bureau of Labor Statistics.

STATE OF FLORIDA
LOCAL AREA UNEMPLOYMENT STATISTICS BY COUNTY
(NOT SEASONALLY ADJUSTED)

JANUARY 2009					DECEMBER 2008				JANUARY 2008			
COUNTY	LABOR FORCE	EMPLOY- MENT	UNEMPLOYMENT LEVEL	RATE (%)	LABOR FORCE	EMPLOY- MENT	UNEMPLOYMENT LEVEL	RATE (%)	LABOR FORCE	EMPLOY- MENT	UNEMPLOYMENT LEVEL	RATE (%)
MADISON	6670	5977	693	10.4	6981	6387	594	8.5	6877	6470	407	5.9
MANATEE	145144	130516	14628	10.1	146737	133459	13278	9.0	145237	137853	7384	5.1
MARION	140515	124214	16301	11.6	140284	126129	14155	10.1	137177	128894	8283	6.0
MARTIN	63821	57677	6144	9.6	64107	58618	5489	8.6	64314	60815	3499	5.4
MIAMI-DADE	1196685	1115489	81196	6.8	1215098	1129731	85367	7.0	1208195	1151038	57157	4.7
MONROE	48160	45315	2845	5.9	48130	45617	2513	5.2	46714	45305	1409	3.0
NASSAU	35724	32670	3054	8.5	35780	33210	2570	7.2	35070	33532	1538	4.4
OKALOOSA	95983	89261	6722	7.0	96947	91050	5897	6.1	93310	89572	3738	4.0
OKEECHOBEE	18548	16565	1983	10.7	18331	16544	1787	9.7	17648	16628	1020	5.8
ORANGE	601106	547661	53445	8.9	607609	560320	47289	7.8	595803	568981	26822	4.5
OSCEOLA	135026	121764	13262	9.8	136406	124579	11827	8.7	133310	126505	6805	5.1
PALM BEACH	628341	571356	56985	9.1	631934	581231	50703	8.0	620328	588530	31798	5.1
PASCO	197277	176045	21232	10.8	198433	179912	18521	9.3	194034	182168	11866	6.1
PINELLAS	457392	413969	43423	9.5	461081	423061	38020	8.2	451180	428365	22815	5.1
POLK	273323	246307	27016	9.9	274746	250992	23754	8.6	269031	255137	13894	5.2
PUTNAM	33067	29512	3555	10.8	33157	30101	3056	9.2	31831	29961	1870	5.9
ST. JOHNS	92958	85902	7056	7.6	93307	87321	5986	6.4	91959	88169	3790	4.1
ST. LUCIE	123209	108432	14777	12.0	123421	110199	13222	10.7	122570	114331	8239	6.7
SANTA ROSA	68990	63300	5690	8.2	69258	64271	4987	7.2	67800	64760	3040	4.5
SARASOTA	168021	151198	16823	10.0	168836	154608	14228	8.4	169910	159698	10212	6.0
SEMINOLE	240040	220166	19874	8.3	242661	225255	17406	7.2	239349	228737	10612	4.4
SUMTER	32695	30136	2559	7.8	32235	30026	2209	6.9	30213	28887	1326	4.4
SUWANNEE	17807	16324	1483	8.3	17906	16616	1290	7.2	17055	16260	795	4.7
TAYLOR	9261	8302	959	10.4	9155	8410	745	8.1	8861	8392	469	5.3
UNION	5236	4905	331	6.3	5254	4953	301	5.7	5129	4922	207	4.0
VOLUSIA	252308	227293	25015	9.9	252994	230953	22041	8.7	250075	236857	13218	5.3
WAKULLA	15294	14306	988	6.5	15312	14423	889	5.8	15057	14531	526	3.5
WALTON	31480	29164	2316	7.4	31540	29582	1958	6.2	29275	28051	1224	4.2
WASHINGTON	10053	9094	959	9.5	10111	9222	889	8.8	9556	9058	498	5.2
FLORIDA												
NOT SEASONALLY ADJUSTED												
	9181000	8373000	808000	8.8	9248000	8523000	726000	7.8	9116000	8663000	453000	5.0
SEASONALLY ADJUSTED												
	9256000	8456000	800000	8.6	9343000	8634000	709000	7.6	9155000	8698000	457000	5.0
UNITED STATES												
NOT SEASONALLY ADJUSTED												
	153445000	140436000	13009000	8.5	154349000	143350000	10999000	7.1	152828000	144607000	8221000	5.4
SEASONALLY ADJUSTED												
	153716000	142099000	11616000	7.6	154447000	143338000	11108000	7.2	153873000	146317000	7555000	4.9

PAGE 2 OF 2

RELEASED MARCH 6, 2009

NOTE: Items may not add to totals or compute to displayed percentages due to rounding. All data are subject to revision.

SOURCE: Florida Agency for Workforce Innovation, Labor Market Statistics Center, Local Area Unemployment Statistics Program, in cooperation with the U.S. Department of Labor, Bureau of Labor Statistics.

STATE OF FLORIDA
LOCAL AREA UNEMPLOYMENT STATISTICS BY METROPOLITAN STATISTICAL AREA (MSA)
(NOT SEASONALLY ADJUSTED)

JANUARY 2009					DECEMBER 2008				JANUARY 2008			
MSA (COUNTIES)	LABOR FORCE	EMPLOY- MENT	UNEMPLOYMENT LEVEL	RATE (%)	LABOR FORCE	EMPLOY- MENT	UNEMPLOYMENT LEVEL	RATE (%)	LABOR FORCE	EMPLOY- MENT	UNEMPLOYMENT LEVEL	RATE (%)
BRADENTON-SARASOTA-VENICE (Manatee and Sarasota)	313165	281714	31451	10.0	315573	288067	27506	8.7	315147	297551	17596	5.6
CAPE CORAL-FT. MYERS (Lee)	279769	247729	32040	11.5	281695	253216	28479	10.1	290390	271688	18702	6.4
DELTONA-DAYTONA BEACH-ORMOND BEACH (Volusia)	252308	227293	25015	9.9	252994	230953	22041	8.7	250075	236857	13218	5.3
FT. WALTON BEACH-CRESTVIEW-DESTIN (Okaloosa)	95983	89261	6722	7.0	96947	91050	5897	6.1	93310	89572	3738	4.0
GAINESVILLE (Alachua and Gilchrist)	139507	131232	8275	5.9	140238	132953	7285	5.2	136536	131838	4698	3.4
JACKSONVILLE (Baker, Clay, Duval, Nassau, and St. Johns)	680905	622776	58129	8.5	683319	633061	50258	7.4	670765	639210	31555	4.7
LAKELAND-WINTER HAVEN (Polk)	273323	246307	27016	9.9	274746	250992	23754	8.6	269031	255137	13894	5.2
MIAMI-FT. LAUDERDALE-POMPANO BEACH (Broward, Miami-Dade, and Palm Beach)	2823609	2608686	214923	7.6	2855329	2651102	204227	7.2	2828461	2697255	131206	4.6
Ft. Lauderdale-Pompano Beach-Deerfield Beach Metropolitan Division (Broward)	998583	921841	76742	7.7	1008297	940140	68157	6.8	999938	957687	42251	4.2
Miami-Miami Beach-Kendall Metropolitan Division (Miami-Dade)	1196685	1115489	81196	6.8	1215098	1129731	85367	7.0	1208195	1151038	57157	4.7
West Palm Beach-Boca Raton-Boynton Beach Metropolitan Division (Palm Beach)	628341	571356	56985	9.1	631934	581231	50703	8.0	620328	588530	31798	5.1
NAPLES-MARCO ISLAND (Collier)	152295	138901	13394	8.8	153272	141184	12088	7.9	154486	146681	7805	5.1
OCALA (Marion)	140515	124214	16301	11.6	140284	126129	14155	10.1	137177	128894	8283	6.0
ORLANDO-KISSIMMEE (Lake, Orange, Osceola, and Seminole)	1110990	1011354	99636	9.0	1122710	1034730	87980	7.8	1101782	1050725	51057	4.6
PALM BAY-MELBOURNE-TITUSVILLE (Brevard)	264809	239740	25069	9.5	265652	243242	22410	8.4	265100	250874	14226	5.4
PALM COAST (Flagler)	31916	27372	4544	14.2	31708	27967	3741	11.8	30903	28353	2550	8.3
PANAMA CITY-LYNN HAVEN-PANAMA CITY BEACH (Bay)	87388	78839	8549	9.8	88098	80214	7884	8.9	84472	80090	4382	5.2
PENSACOLA-FERRY PASS-BRENT (Escambia and Santa Rosa)	209471	190930	18541	8.9	210005	193860	16145	7.7	204927	195335	9592	4.7
PORT ST. LUCIE (Martin and St. Lucie)	187030	166109	20921	11.2	187528	168817	18711	10.0	186884	175146	11738	6.3
PUNTA GORDA (Charlotte)	69536	61865	7671	11.0	69301	62594	6707	9.7	70049	65280	4769	6.8
SEBASTIAN-VERO BEACH (Indian River)	61203	54607	6596	10.8	61614	55720	5894	9.6	62744	58831	3913	6.2
TALLAHASSEE (Gadsden, Jefferson, Leon, and Wakulla)	189543	177089	12454	6.6	189376	178535	10841	5.7	186761	179872	6889	3.7
TAMPA-ST. PETERSBURG-CLEARWATER (Hernando, Hillsborough, Pasco, and Pinellas)	1320377	1192910	127467	9.7	1330760	1219110	111650	8.4	1303464	1234395	69069	5.3
FLORIDA												
NOT SEASONALLY ADJUSTED	9181000	8373000	808000	8.8	9248000	8523000	726000	7.8	9116000	8663000	453000	5.0
SEASONALLY ADJUSTED	9256000	8456000	800000	8.6	9343000	8634000	709000	7.6	9155000	8698000	457000	5.0
UNITED STATES												
NOT SEASONALLY ADJUSTED	153445000	140436000	13009000	8.5	154349000	143350000	10999000	7.1	152828000	144607000	8221000	5.4
SEASONALLY ADJUSTED	153716000	142099000	11616000	7.6	154447000	143338000	11108000	7.2	153873000	146317000	7555000	4.9

RELEASED MARCH 6, 2009

NOTE: Items may not add to totals or compute to displayed percentages due to rounding. All data are subject to revision.

SOURCE: Florida Agency for Workforce Innovation, Labor Market Statistics Center, Local Area Unemployment Statistics Program, in cooperation with the U.S. Department of Labor, Bureau of Labor Statistics.

STATE OF FLORIDA
COUNTIES RANKED BY UNEMPLOYMENT RATE
(NOT SEASONALLY ADJUSTED)

JANUARY 2009
(Preliminary)

RELEASED 03/06/2009

UNEMPLOYMENT			UNEMPLOYMENT		
RANK	COUNTY	RATE (%)	RANK	COUNTY	RATE (%)
1	FLAGLER	14.2	36	COLLIER	8.8
2	HERNANDO	12.4	37	GULF	8.8
3	ST. LUCIE	12.0		FLORIDA	8.8
4	HAMILTON	12.0	38	NASSAU	8.5
5	MARION	11.6		UNITED STATES	8.5
6	LEE	11.5	39	SUWANNEE	8.3
7	CITRUS	11.4	40	GILCHRIST	8.3
8	CHARLOTTE	11.0	41	SEMINOLE	8.3
9	INDIAN RIVER	10.8	42	SANTA ROSA	8.2
10	PASCO	10.8	43	CLAY	8.2
11	PUTNAM	10.8	44	BAKER	8.1
12	OKEECHOBEE	10.7	45	DESOTO	8.1
13	HENDRY	10.7	46	SUMTER	7.8
14	DIXIE	10.4	47	HARDEE	7.8
15	MADISON	10.4	48	GLADES	7.8
16	TAYLOR	10.4	49	CALHOUN	7.8
17	MANATEE	10.1	50	BROWARD	7.7
18	LEVY	10.0	51	COLUMBIA	7.7
19	SARASOTA	10.0	52	ST. JOHNS	7.6
20	GADSDEN	10.0	53	HOLMES	7.5
21	VOLUSIA	9.9	54	JEFFERSON	7.4
22	POLK	9.9	55	WALTON	7.4
23	OSCEOLA	9.8	56	LAFAYETTE	7.3
24	BAY	9.8	57	FRANKLIN	7.0
25	LAKE	9.7	58	OKALOOSA	7.0
26	MARTIN	9.6	59	JACKSON	6.9
27	WASHINGTON	9.5	60	BRADFORD	6.8
28	PINELLAS	9.5	61	MIAMI-DADE	6.8
29	BREVARD	9.5	62	WAKULLA	6.5
30	HIGHLANDS	9.2	63	UNION	6.3
31	ESCAMBIA	9.1	64	LEON	6.0
32	HILLSBOROUGH	9.1	65	MONROE	5.9
33	PALM BEACH	9.1	66	ALACHUA	5.8
34	ORANGE	8.9	67	LIBERTY	5.5
35	DUVAL	8.8			

NOTE: All data are subject to revision.

Source: Florida Agency for Workforce Innovation, Labor Market Statistics Center, Local Area Unemployment Statistics Program, in cooperation with the U.S. Department of Labor, Bureau of Labor Statistics.

STATE OF FLORIDA
METROPOLITAN STATISTICAL AREAS (MSAs) AND METROPOLITAN DIVISIONS (MDs)
RANKED BY UNEMPLOYMENT RATE
(NOT SEASONALLY ADJUSTED)
JANUARY 2009 (Preliminary)

1. Palm Coast MSA	14.2 %
2. Ocala MSA	11.6
3. Cape Coral-Ft. Myers MSA	11.5
4. Port St. Lucie MSA	11.2
5. Punta Gorda MSA	11.0
6. Sebastian-Vero Beach MSA	10.8
7. Bradenton-Sarasota-Venice MSA	10.0
8. Deltona-Daytona Beach-Ormond Beach MSA	9.9
9. Lakeland-Winter Haven MSA	9.9
10. Panama City-Lynn Haven-Panama City Beach MSA	9.8
11. Tampa-St. Petersburg-Clearwater MSA	9.7
12. Palm Bay-Melbourne-Titusville MSA	9.5
13. West Palm Beach-Boca Raton-Boynton Beach MD	9.1
14. Orlando-Kissimmee MSA	9.0
15. Pensacola-Ferry Pass-Brent MSA	8.9
Florida	8.8
16. Naples-Marco Island MSA	8.8
17. Jacksonville MSA	8.5
United States	8.5
18. Ft. Lauderdale-Pompano Beach-Deerfield Beach MD	7.7
19. Miami-Ft. Lauderdale-Pompano Beach MSA	7.6
20. Ft. Walton Beach-Crestview-Destin MSA	7.0
21. Miami-Miami Beach-Kendall MD	6.8
22. Tallahassee MSA	6.6
23. Gainesville MSA	5.9

Released March 6, 2009

NOTE: All data are subject to revision.

Source: Florida Agency for Workforce Innovation, Labor Market Statistics Center, Local Area Unemployment Statistics Program, in cooperation with the U.S. Department of Labor, Bureau of Labor Statistics.

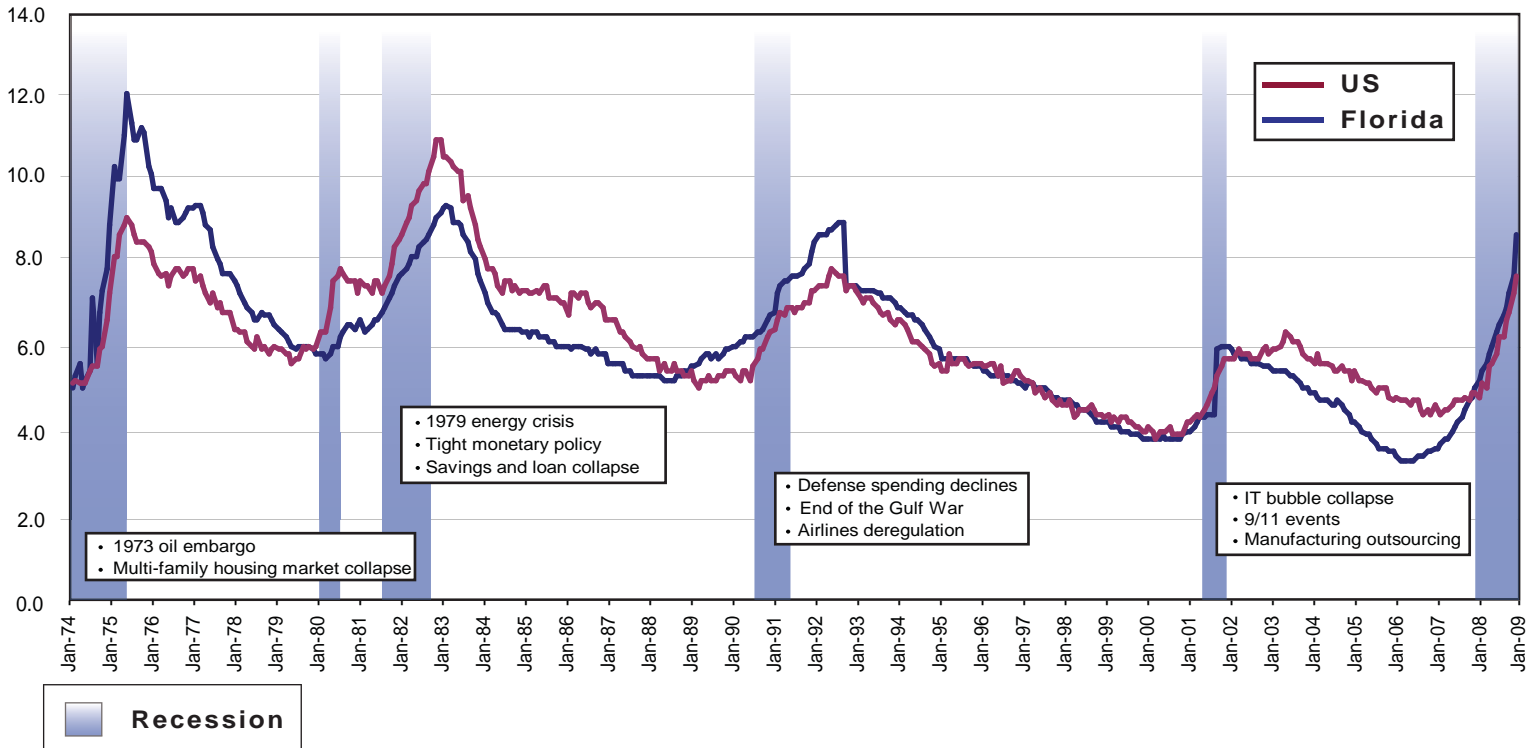
TOTAL NONAGRICULTURAL EMPLOYMENT
FLORIDA (Not Seasonally Adjusted)

Area	January 2009	December 2008	January 2008	Over-the-Month Change		Over-the-Year Change	
				Level	Percent	Level	Percent
Statewide	7,530,100	7,656,900	7,871,800	-126,800	-1.7%	-341,700	-4.3%
Bradenton-Sarasota-Venice MSA	259,500	264,100	276,600	-4,600	-1.7%	-17,100	-6.2%
Cape Coral-Ft. Myers MSA	205,500	208,800	226,100	-3,300	-1.6%	-20,600	-9.1%
Deltona-Daytona Beach-Ormond Beach MSA	161,700	163,400	170,100	-1,700	-1.0%	-8,400	-4.9%
Ft. Lauderdale-Pompano Beach-Deerfield Beach MD	752,200	762,900	783,800	-10,700	-1.4%	-31,600	-4.0%
Ft. Walton Beach-Crestview-Destin MSA	79,700	80,900	80,800	-1,200	-1.5%	-1,100	-1.4%
Gainesville MSA	133,700	135,000	135,400	-1,300	-1.0%	-1,700	-1.3%
Jacksonville MSA	605,800	612,900	626,400	-7,100	-1.2%	-20,600	-3.3%
Lakeland-Winter Haven MSA	203,700	206,400	211,600	-2,700	-1.3%	-7,900	-3.7%
Miami-Ft. Lauderdale-Pompano Beach MSA	2,319,100	2,350,000	2,399,900	-30,900	-1.3%	-80,800	-3.4%
Miami-Miami Beach-Kendall MD	1,031,200	1,044,300	1,060,600	-13,100	-1.3%	-29,400	-2.8%
Naples-Marco Island MSA	123,300	124,800	131,100	-1,500	-1.2%	-7,800	-5.9%
Ocala MSA	100,500	101,400	105,400	-900	-0.9%	-4,900	-4.6%
Orlando-Kissimmee MSA	1,047,300	1,064,900	1,089,100	-17,600	-1.7%	-41,800	-3.8%
Palm Bay-Melbourne-Titusville MSA	200,800	202,600	211,500	-1,800	-0.9%	-10,700	-5.1%
Panama City-Lynn Haven-Panama City Beach MSA	72,100	73,200	73,700	-1,100	-1.5%	-1,600	-2.2%
Pensacola-Ferry Pass-Brent MSA	163,300	164,900	168,600	-1,600	-1.0%	-5,300	-3.1%
Port St. Lucie MSA	123,900	125,300	132,300	-1,400	-1.1%	-8,400	-6.3%
Punta Gorda MSA	41,800	42,100	44,400	-300	-0.7%	-2,600	-5.9%
Sebastian-Vero Beach MSA	46,000	46,500	49,400	-500	-1.1%	-3,400	-6.9%
Tallahassee MSA	173,900	174,600	178,200	-700	-0.4%	-4,300	-2.4%
Tampa-St. Petersburg-Clearwater MSA	1,194,900	1,214,100	1,237,100	-19,200	-1.6%	-42,200	-3.4%
West Palm Beach-Boca Raton-Boynton Beach MD	535,700	542,800	555,500	-7,100	-1.3%	-19,800	-3.6%

Note: Employment estimates have been rounded to the nearest hundred. Sum of detail may not equal totals due to rounding or the exclusion of certain industries from publication. All data are subject to revision. Released March 06, 2009.

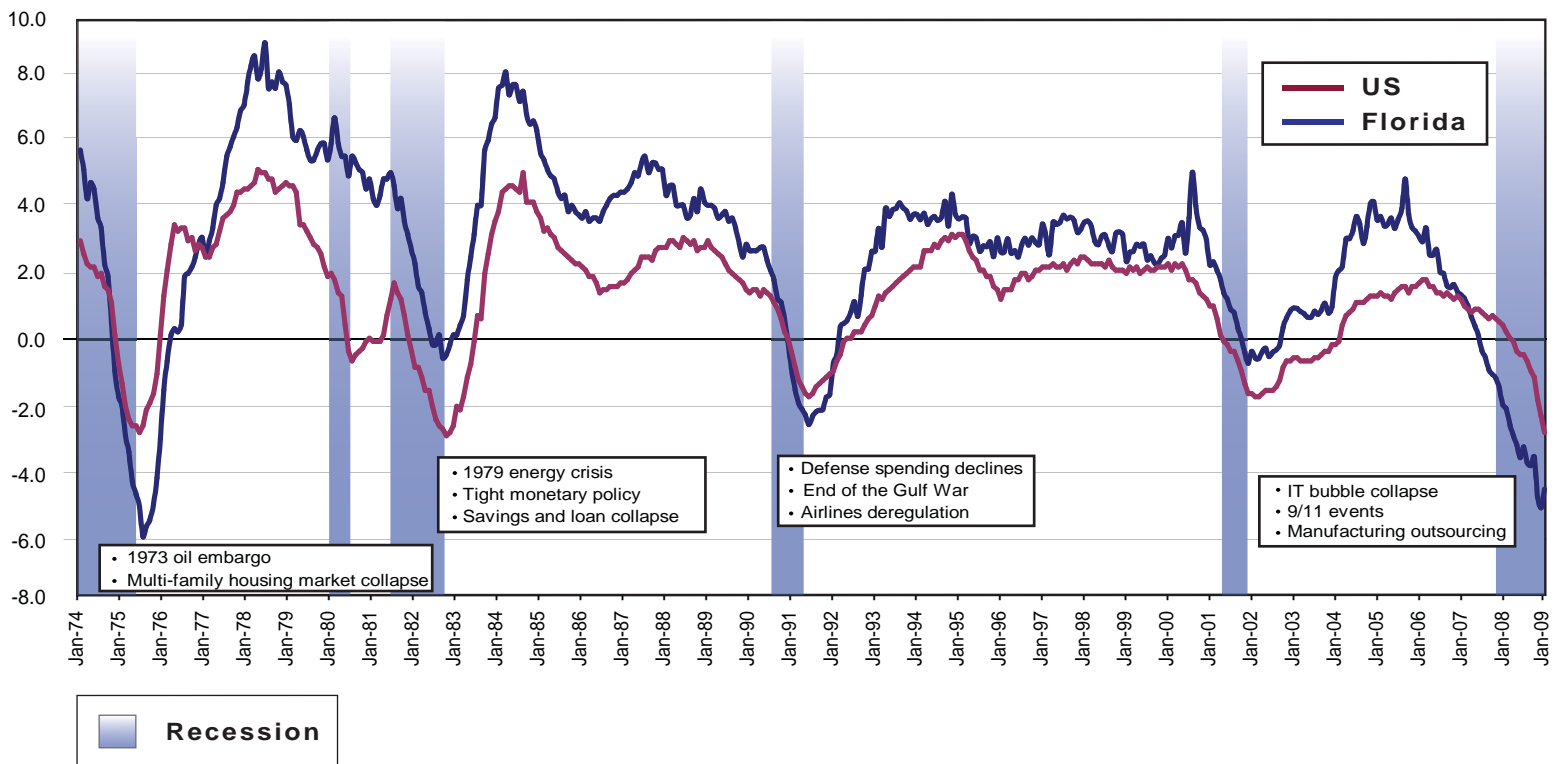
Florida and United States Labor Statistics and Recessionary Periods January 1974 - January 2009

Unemployment Rates



Source: Florida Agency for Workforce Innovation, Labor Market Statistics Center, Local Area Unemployment Statistics Program, in cooperation with the U.S. Department of Labor, Bureau of Labor Statistics.
Prepared March, 2009 (seasonally adjusted)

Total Nonagricultural Employment Annual Job Growth Rates



Source: Florida Agency for Workforce Innovation, Labor Market Statistics Center, Current Employment Statistics Program, in cooperation with the U.S. Department of Labor, Bureau of Labor Statistics.
Prepared March, 2009 (not seasonally adjusted)