

Office of the President  
727-341-3241

**Board of Trustees**

Chair Bill Foster, Vice Chair Nathan Stonecipher,  
Trustee Katie Cole, Trustee Deveron M. Gibbons, President William D. Law, Jr.

August 3, 2017  
Cissy Proctor  
Executive Director  
Florida Department of Economic Opportunity  
107 East Madison Street  
Caldwell Building  
Tallahassee, FL 32399-4120

Re: Florida Job Growth Grant Fund Workforce Training Grant Proposal

Dear Ms. Proctor:

It is my pleasure to present the enclosed *Pinellas County Security and Defense Center* proposal on behalf of **St. Petersburg College (SPC)** for the Florida Job Growth Grant Fund – Workforce Training. This project demonstrates SPC's strong, documented commitment to quality education and workforce training programs in targeted high-skill industries that drive our local and state economy.

SPC has a long history of providing transformative academic and training opportunities for students in the Tampa Bay region. We have worked on numerous grant-funded projects where we engage with state and national industry leaders to build curriculum in high demand fields including public safety, IT, healthcare, manufacturing and more.

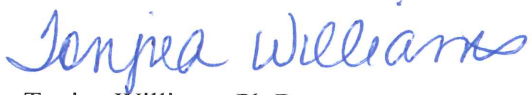
These projects include: multiple Quick Response Training and FloridaFlex grants through CareerSource Florida to help area businesses create new, full-time, high-quality jobs as well as train current employees; the Carl D. Perkins Vocational and Technical Education Act grant to provide services for students enrolled in postsecondary vocational programs including associate in sciences degrees, applied technology diplomas and college credit certificates; a U.S. Department of State grant to provide technical assistance and oversight to the Salvadoran National Police to improve community perception and confidence in the agency; a National Science Foundation Advanced Technical Education grant to develop a biomedical engineering technology degree program, and multiple U.S. Department of Labor Trade Adjustment Assistance Community College Training grant programs for expanded bioscience, orthotics and prosthetics and advanced manufacturing training.

The College has identified multiple businesses and organizations that will play a role in the implementation of this program, and whose commitment is noted in the attached letters. These organizations have identified skilled labor in security, defense, public safety and cybersecurity as a critical shortage area that would be bolstered by this program. SPC prides itself on having excellent partnerships with leading entities in the Tampa Bay region and beyond, and our continued engagement and collaboration with key community partners will be an asset in making a positive impact with this project.

In closing, thank you for your careful consideration of SPC's proposal. The College leadership is dedicated to the enhancement of SPC's mission through the implementation of the *Pinellas County*

*Security and Defense Center* program, pledging the resources, such as lab space and faculty expertise, as well as the time needed to achieve its outcomes. Based on SPC's dedication to student success and our previous and ongoing innovative projects, I am convinced that we are an ideal candidate for Florida Job Growth Grant Fund for Workforce Training.

Sincerely,



Tonjua Williams, Ph.D.  
President



## **Florida Job Growth Grant Fund Workforce Training Grant Proposal**

Proposal Instructions: The Florida Job Growth Grant Fund Proposal (this document) must be completed and signed by an authorized representative of the entity applying for the grant. Please read the proposal carefully as some questions may require a separate narrative to be completed.

### **Entity Information**

Name of Entity: Board of Trustees of St. Petersburg College (SPC)

Federal Employer Identification Number: [REDACTED]

Contact Information:

Primary Contact Name: Brian Frank

Title: Dean, College of Public Safety

Mailing Address: 3200 34<sup>th</sup> Street S.  
St. Petersburg, FL 33711

Phone Number: 727-341-4143

Email: frank.brian@spcollege.edu

### **Workforce Training Grant Eligibility**

Pursuant to 288.101, F.S., The Florida Job Growth Grant Fund was created to promote economic opportunity by improving public infrastructure and enhancing workforce training. This includes workforce training grants to support programs offered at state colleges and state technical centers.

Eligible entities must submit proposals that:

- Support programs and associated equipment at state colleges and state technical centers.
- Provide participants with transferable and sustainable workforce skills applicable to more than a single employer.
- Are offered to the public.
- Are based on criteria established by the state colleges and state technical centers.
- Prohibit the exclusion of applicants who are unemployed or underemployed.



## 1. Program Requirements:

Each proposal must include the following information describing how the program satisfies the eligibility requirements listed on page 1.

### A. Provide the title and a detailed description of the proposed workforce training.

#### Title: Pinellas County Security and Defense Center

##### State of the Workforce

St. Petersburg College (SPC), private industry, and local law enforcement, fire, and emergency service agencies have come together as a strong and experienced group to design the **Pinellas County Security and Defense Center (PCSDC)**, a direct response to the national, state, and local needs for professionals that support the homeland security and defense industry. From first line responders to cybersecurity analysts, the homeland security and defense industry is growing exponentially and the need for well-trained personnel has become even more imperative to meet job demand and ensure ability to respond in the event of a disaster. The PCSDC represents a coordinated effort to provide multiple avenues for accelerated job training—from short-term certificates to associate and baccalaureate degrees—that will strengthen the security and defense workforce pipeline in Pinellas County, Tampa Bay, and across Florida.

##### Background

The U.S. Department of Homeland Security houses multiple areas of concentration, two of which are particularly salient to Pinellas and the Tampa Bay region: **emergency preparedness** and **cybersecurity**.

With over 700 miles of coastline and a large number of ports, Tampa Bay faces a unique susceptibility to natural disasters such as hurricanes and flooding. A World Bank study on disaster response has called Tampa Bay one of the 10 most at-risk zones in the world; should a category 4 or 5 hurricane hit, simulations predict at least 2 million residents would require medical treatment and death tolls could top those of Hurricane Katrina—desperately straining all emergency resources.<sup>1</sup> This region is also a target for man-made mass casualty events with a large tourism industry and four key military installations, including the U.S. Special Operations Command at MacDill Air Force Base in Hillsborough and the largest and busiest U.S. Coast Guard Air Station base in the world in Pinellas.<sup>2</sup> As the second most densely-populated county in Florida, Pinellas poses an even higher demand for adequate safety and defense services. Pinellas County's multi-jurisdictional Emergency Medical Services program is the 3rd largest in the country,<sup>3</sup> and aging personnel in all first response sectors add to the personnel burden. Pinellas County has 24 individual municipalities that serve a total population of almost one million residents.

This region also presents unique challenges related to cybersecurity threats. Cybercrime costs the U.S. approximately \$400 billion per year. Tampa Bay currently ranks as the state's leading technology hub,<sup>4</sup> and is home to 19 global corporate headquarters and thousands of corporations and infrastructure agencies,

---

<sup>1</sup> Fears, D. (2017, July 28). Tampa Bay's coming storm. *The Washington Post*. Retrieved from [washingtonpost.com/graphics/2017/health/environment/tampa-bay-climate-change/?utm\\_term=.0f132dce28da](http://www.washingtonpost.com/graphics/2017/health/environment/tampa-bay-climate-change/?utm_term=.0f132dce28da)

<sup>2</sup> U.S. Coast Guard Atlantic Area. (n.d.) Air State Clearwater web page. Retrieved from [atlanticarea.uscg.mil/Our-Organization/District-7/Units/Air-Station-Clearwater/](http://atlanticarea.uscg.mil/Our-Organization/District-7/Units/Air-Station-Clearwater/)

<sup>3</sup> Pinellas County Florida. (n.d.) Emergency Medical Services Authority web page. Retrieved from [pinellascounty.org/boards/ems-authority](http://pinellascounty.org/boards/ems-authority)

<sup>4</sup> Trigaux, R. (2015, October 8). STEM jobs: Tampa Bay lead Florida but can it become a bigger tech player? *Tampa Bay Times*. Retrieved from <http://www.tampabay.com/news/business/stem-jobs-tampa-bay-leads-florida-but-can-it-become-a-bigger-tech-player/2248874>.



all of which are vulnerable to cyberattack and need a prepared workforce to meet encroaching threats. According to a 2013 Florida Center for Cybersecurity report:

*“The demand is huge. Even when compared with other high-demand IT jobs, demand for cybersecurity jobs (in Tampa Bay) is growing more than three times faster. Business leaders say they can’t hire skilled cybersecurity workers fast enough, and our nation’s military and homeland security agencies are looking for help in navigating the constantly changing world of cybersecurity research.”<sup>5</sup>*

Experts have also noted a global shortage of cybersecurity skills. It’s estimated that the current global job market has more than 1,000,000 job openings for cybersecurity professionals.<sup>6</sup>

Because of these unique challenges, business leaders have long identified homeland security and defense as a leading industry employment cluster in the Sunshine State. In Pinellas County and the Tampa Bay region, top companies in homeland security and defense include CLI Solutions, General Dynamics Ordnance and Tactical Systems, Honeywell International, Lockheed Martin Gyrocam Systems, Raytheon Network Centric Solutions, and SRI International. These private employers add to the regional defense landscape that includes municipal and county emergency management departments, first line responders, and infrastructure such as hospital networks, financial systems, and telecommunications—all of which require a steady pipeline of well-trained and responsive personnel.

#### Partnership

To meet this workforce demand and ensure the safety of our region’s citizens, the **Pinellas County Security and Defense Center (PCSDC)** will act as an innovative hub for **training, coordination and collaboration** to prepare residents for employment in those professions that play a pivotal role in strengthening the security of our community. Imperative to the success of the PCSDC will be collaboration with SPC advisory boards, regional and county agencies, and the security and defense industry. Municipal police departments, EMS companies, local emergency management departments, and private industry will play an integral role in simulation development, personnel training, and pipeline sustainability for job opportunities and advancement.

PCSDC will also incorporate best practices and proven techniques from national training models for emergency simulations and disaster response, including the New York City Emergency Management Plan. As the nation’s largest city in population and as a target of both man-made and natural disasters, New York City’s Emergency Management department has developed a comprehensive, evidence-based response plan that has been emulated across multiple states and countries.<sup>7</sup>

The PCSDC will also leverage key existing resources at St. Petersburg College (SPC). SPC’s nationally-recognized **Center for Public Safety and Innovation (CPSI)** is one of only four specialized training centers of its kind in the United States. CPSI is a continuing education leader for personnel already employed multiple public safety agencies across the U.S., including emergency management, law enforcement, firefighters, military, and the public sector. CPSI has developed one-day trainings, videos, and materials in areas such as human trafficking, firefighter suicide prevention, terrorism, hate crimes, and cybercrime. CPSI’s experience partnering with and delivering trainings and presentations for the U.S. Department of

---

<sup>5</sup> State University System of Florida Board of Governors. (2013, December). *Florida Center for Cybersecurity: Making Florida the Cyber State*. Tallahassee, FL.

<sup>6</sup> Wirth, A. (2016). The Importance of Cybersecurity Training for HTM Professionals. *Biomedical Instrumentation & Technology*. 50(5), 381-383. DOI: 10.2345/0899-8205-50.5.381

<sup>7</sup>Krakauer, B., Murphy, K., Ribowsky, M., Schmid, D., Scott, P., Servetz, S. ... Suss, M. (2016, October). *New York City Emergency Management Strategic Plan 2017-2021*. New York, NY: New York City Emergency Management.



Justice, the U.S. Department of Homeland Security, FEMA, and the U.S. Attorney’s office will help to inform PCSDC’s academic training models and curriculum.

The **Tampa Bay Electronic Crimes Task Force (TBECTF)** is a strategic alliance of sixteen federal, state and local law enforcement agencies. In April 2016, the TBECTF and Pinellas County Sherriff’s Office opened the TBECTF Electronic Crimes Forensics Laboratory, one of only 40 sites nationally and the most advanced lab in the state conducting digital forensics. Seeing the need for student training in this field, the Task Force also created the **Crime Investigation and Cybersecurity Student Training Center** at SPC, which processes simulated evidence like that from the TBECTF lab. SPC College of Computer and Information Technology students gain first-hand experience in processing digital crime evidence and cybersecurity techniques, a strength that will be built upon under this program.

Program Design

In order to address the region’s training and personnel needs tied to homeland security and defense, PCSDC will focus on two key, integrated segments: 1) **People**; and 2) **Systems**. Tied to each of these segments will be: 1) Short-term training for rapid employment and long-term degree opportunities for advancing employment and 2) Simulated, experiential learning in disaster response and security. Incorporated into the Center will also be a series of coordinated, cross-agency collaborations designed to better align disaster response services in Pinellas and statewide. Through these efforts, the PCSDC will meet local, state, and regional workforce demands in multiple occupation sectors.

**1) People**

In a natural or man-made traumatic event, multiple tiers of responders exist to triage and mitigate the situation, from those first on the scene to those handling casualties once they are transported to receive care. As indicated by the World Bank report, any mass-scale event in the Tampa Bay region would require a large number of responders to appropriately coordinate care.<sup>8</sup> The PCSDC will emphasize training for those first and second-line responders to increase response capacity and expertise in the field.

First-Line Responders	Second-Line Responders
<ul style="list-style-type: none"> <li>• Police</li> <li>• Fire</li> <li>• EMS</li> <li>• Corrections Officers</li> <li>• 911 Dispatchers</li> </ul>	<ul style="list-style-type: none"> <li>• County and city emergency management personnel</li> <li>• Hospital medical staff</li> <li>• Hospital administrators</li> </ul>

Under this grant program, the Pinellas County Security and Defense Center (PCSDC) will support:

Certificate and Degree Programs: The PCSDC will incorporate existing certificate and degree programs as well as create new, short-term certificate and training programs to ensure a broad base of students to quickly fill available job positions across police, fire, EMS, emergency management, and health administration agencies. Evidence from municipal agencies and national data shows that first responder personnel are aging out of the system, and are retiring at younger ages.<sup>9</sup> As management positions become available and are filled with existing personnel, entry-level positions open that need well-trained candidates.

Specifically, the PCSDC will:

<sup>8</sup>Fears, D. (2017, July 28). Tampa Bay’s coming storm. *The Washington Post*. Retrieved from [washingtonpost.com/graphics/2017/health/environment/tampa-bay-climate-change/?utm\\_term=.0f132dce28da](http://www.washingtonpost.com/graphics/2017/health/environment/tampa-bay-climate-change/?utm_term=.0f132dce28da)  
<sup>9</sup>Shapiro, D. (2016, December 12). Local Communities Struggle to Recruit Enough Firefighters. *The Daily Telegram*. Retrieved from [lenconnect.com/news/20161211/local-communities-struggle-to-recruit-enough-firefighters](http://lenconnect.com/news/20161211/local-communities-struggle-to-recruit-enough-firefighters)



- **Enhance SPC's existing post-secondary adult vocational (PSAV) certificate, short-term training, and degree programs** in police, fire, homeland security, emergency management, and health services administration through the use of simulation training, as detailed in the subsequent section.
- **Develop NEW 911 PSAV Program:** This program, which trains 911 dispatchers, will be developed in direct response to high employer demand from municipal and county agencies, as detailed in the attached Letter of Support from the City of Largo Police Department.
- **Expand EMT PSAV Program:** SPC's current EMT program serves students on one campus located in mid-Pinellas County. Expansion of this program to an additional campus will increase access for new students as well as training capacity for EMT certificates. Current demand for qualified EMTs is high in Pinellas, with many experts approximating a nearly 40% turnover rate among new EMTs.
- **Develop NEW Health Care Emergency Preparedness Certificate:** This short-term continuing education certificate will serve hospital administrators, nurses, emergency managers, public health administrators and other ancillary healthcare and public safety personnel to prepare them in planning, response, and recovery for disasters.
- **Develop NEW Emergency Management Advanced Training Certificate:** This advanced training certificate, designed for students who have completed an A.S. degree or a B.A./B.S. degree from another field of study, will incorporate courses from the Public Safety Administration and Health Services Administration baccalaureate degrees. It will allow students the opportunity to receive homeland security and emergency management training in both the public safety and health fields, earning a FEMA-supported credential that promotes upward job training and mobility and articulates into one of two B.A.S. programs.

Short-term certificates allow trainees to seek rapid, high-wage employment upon completion while continuing to build their skills toward a degree program, such as Public Safety Administration. Existing Career and Academic Advisors will work with students to develop a career and academic pathway plan, ensuring that students are aware of entry and exit points along the training pipeline as well as what credits are needed to continue their education and earn an associate or baccalaureate degree.

*Incorporating Experiential Simulation:* Hands-on training is critical for emergency personnel to develop their instincts and skills during a critical event. Simulations help to prepare all first responders for the unthinkable, like the Orlando Pulse Nightclub shooting. As Sean Becker, president of the Clearwater Fire Fighters Association, states: "We went to fire school knowing that we would have to put out fires, but ... most of us never knew we would have to be wearing ballistic gear to respond to calls."<sup>10</sup> At present, all agencies in Pinellas utilize FEMA tabletop training exercises to drill for disaster preparedness. Pinellas County also hosts large-scale, mass casualty exercises once or twice per year. However, these events typically involve workers already employed by first responder and municipal agencies. Integration of simulation exercises during a certificate or degree program would provide timely, responsive training opportunities to students *before* they seek employment, resulting in students better prepared for the modern workforce and highly valuable to potential employers. Integration of simulations across disciplines will also enhance students' ability to communicate and coordinate with personnel from a range of emergency agencies, resulting in better coordination county-wide.

---

<sup>10</sup> Varn, K. (2017, February 2). The newest gear for Pinellas fire and medical responders? Bullet-resistant vests. *Tampa Bay Times*. Retrieved from [tampabay.com/news/publicsafety/fire/the-newest-gear-for-pinellas-fire-and-medical-responders-bullet-resistant/2311721](http://tampabay.com/news/publicsafety/fire/the-newest-gear-for-pinellas-fire-and-medical-responders-bullet-resistant/2311721)



PCSDC program staff and faculty will develop hands-on training experiences in homeland security and disaster exercises that will be incorporated into first and second responder training programs and administered through the use of mobile disaster simulation training units, purchased under the grant. These mobile disaster simulation training units will be portable for access at multiple campuses and off-site locations to facilitate cross-agency training exercises. These training units and simulation exercises will allow students to build specialized skills in disaster response, communication coordination, and cross-agency collaboration. They will also provide an avenue for continuing education and assessments for incumbent personnel, an ongoing need for every emergency agency.

Utilizing the mobile disaster simulation training units, PCSDC faculty and staff and Subject Matter Experts will also build a library of simulations for training exercises, including fire ground strategies, tactics, and incident command. This simulation library will be made available state-wide to improve training capabilities at other institutions and agencies and build collaborative efforts.

## **2) Systems**

Contemporary concerns over homeland security, counterterrorism, and computer-related crime have created new technological issues for both local and federal law enforcement agencies, financial institutions, and national infrastructure such as telecommunications and transportation. Former U.S. Secretary of Defense Leon Panetta warned in a 2012 speech that the United States could face a “cyber-Pearl Harbor ... An aggressor nation or extremist group could use these kinds of cyber tools to gain control of critical switches. They could contaminate the water supply in major cities, or shut down the power grid across large parts of the country.”<sup>11</sup> Public safety and medical facilities also face their own weaknesses related to cyberterrorism and hacking. Medical devices that save lives have intricate designs that make them difficult to secure and vulnerable to hacking and cyber-attacks.<sup>12</sup> These agencies must be able to weather cyber threats as well.

Assessing and mitigating cybersecurity vulnerabilities as they relate to homeland security and safety issues will require trained personnel with diverse skill sets. Under the **Systems** segment, the Pinellas County Security and Defense Center (PCSDC) will emphasize training for cybersecurity-related certificate and degree programs, including cyberforensics, ensuring students are prepared to face threats at all points in a disaster or cyberterrorism event.

The PCSDC program will support:

Certificate and Degree Programs: In addition to enhancing existing certificate and degree programs, the PCSDC will create new, short-term certificate and degree programs to ensure a broad base of students are able to quickly fill job vacancies. Not only are cybersecurity jobs in high demand in Tampa Bay, they are also high-paying. Cybersecurity and cyberforensics careers routinely command salaries in the high five figures to low six figures, tying directly to the level of certification and degrees that students attain.<sup>13</sup>

Specifically, the PCSDC will:

---

<sup>11</sup> Bumiller, E., and Shanker, T. (2012, October 11). Panetta Warns of Dire Threat of Cyberattack on U.S. *The New York Times*. Retrieved from [nytimes.com/2012/10/12/world/panetta-warns-of-dire-threat-of-cyberattack.html](http://nytimes.com/2012/10/12/world/panetta-warns-of-dire-threat-of-cyberattack.html)

<sup>12</sup> Wirth, A. (2016). The Importance of Cybersecurity Training for HTM Professionals. *Biomedical Instrumentation & Technology*. 50(5), 381-383. DOI: 10.2345/0899-8205-50.5.381

<sup>13</sup> State University System of Florida Board of Governors. (2013, December). *Florida Center for Cybersecurity: Making Florida the Cyber State*. Tallahassee, FL.





- **Enhance existing certificate and degree programs in the SPC College of Computer and Information Technology**, including computer networking, cybersecurity, computer programming and analysis, and digital forensics and computer investigations through the use of simulation training, as detailed in the subsequent section.
- **Develop NEW A.S. Degree in Data Technology**—This degree will prepare students for high-demand, high-wage careers as computer network analysts, information security analysts, and computer and information systems managers.
- **Develop NEW Medical Simulation Technician Certificate**—This short-term certificate will prepare students to use state-of-the-art computer software and equipment to design and facilitate healthcare simulations like those utilized in this program, and can lead to careers as Simulation Technicians.
- **Develop NEW Health Information Security Technician Certificate**—This short-term certificate builds skills to effectively safeguard protected medical information in health IT. Students will prepare for high-demand careers as Information Security Officers and Health Information Privacy and Security Specialists.

These certificate and degree programs will train new students as well as provide continuing education to incumbent county, city, and industry cybersecurity personnel in the latest techniques in cybersecurity and cyberforensics, creating a regional workforce prepared to meet the challenges of cyber threats.

*Incorporating Experiential Simulation:* SPC's *Crime Investigation and Cybersecurity Student Training Center*, supported by the Tampa Bay Electronic Crimes Task Force and Pinellas County Sheriff's Office, engages students in real-world cybersecurity crime investigation that relates directly to potential homeland security threats. Agencies involved in the Task Force include the Federal Bureau of Investigation, the United States Secret Service, private sector employers, and the Florida Center for Cyber Security. Current technology capabilities and capacity at the Training Center are limited; thus, only select students and classes are able to conduct hands-on learning as part of their education programs.

Under this grant program, PCSDC seeks to **expand** the *Crime Investigation and Cybersecurity Student Training Center* at SPC to engage additional students and improve training capabilities. Students in a wide range of certificate and degree programs will be able to perform forensic exams on digital devices such as computers, cell phones, tablets, gaming systems, hard drives, and other electronic devices that store data, piecing together critical information in the event of a digital terrorism event. In addition, cybersecurity simulations will be run cross-disciplinarily to highlight system vulnerabilities within EMS, police, fire, and hospital agencies, helping students and agency leadership learn to assess threats and ensure respective systems are not compromised. This level of experiential learning and cross-training will better prepare students to support their workplace and communicate with law enforcement agencies during a disaster event.

#### **Coordination & Collaboration**

Coordination, communication, and resource allocation across emergency management also remains difficult as Pinellas County has separate leadership for various police, fire, and EMS agencies. The PCSDC will leverage SPC's innovative Collaborative Labs to host a series of meetings each year to advance emergency management coordination across Pinellas and leverage expertise in the implementation of the PCSDC. Collaborative Labs is a customized compression planning model used to facilitate intensive, tech-driven team sessions to achieve the goals of the convening. The use of an outside facilitator for the meetings provides an objective, independent perspective and assists the group to remain focused and forward-moving. This particular meeting methodology has been chosen because of its proven effectiveness in providing stakeholders an equal voice in the process so they derive a sense of ownership in the outcome and maintain enthusiasm moving forward. The Center will also host a statewide summit each year on



homeland security and defense to improve statewide coordination and preparation as well as share best practices from the PCSDC program.

**B. Describe how this proposal supports programs at state colleges or state technical centers.**

Designed in partnership with homeland security-focused public and private sector employers, SPC's **Pinellas County Security and Defense Center (PCSDC)** supports an array of educational and training programming focused on helping individuals and agencies overcome the gaps in knowledge, technical skills, and credentials necessary to fulfill Florida's growing need for homeland security and defense professionals. Pathways from technical certificates to baccalaureate degrees and articulations to master's programs will be supported and explored through this project, potentially aligning multiple education institutions across the region. Through the alignment of public and private partnerships, PCSDC will offer wide access to enhanced and new stackable, short-term certificates and pathways to degree programs to address the skilled workforce shortage and strengthen the current workforce in a field that is ever-evolving.

Founded in 1927, St. Petersburg College (SPC) was the first two-year institution of higher education in the state of Florida and was the first community college to become a baccalaureate degree-granting institution in 2001. SPC now serves approximately 65,000 credit and non-credit students, and offers more than 100 degree and certificate programs. Students represent a broad base of individuals--from those unemployed seeking quick training in order to enter the job market, to those who are pursuing an undergraduate degree prior to moving into a career, to those needed continuing education to maintain credentials or seek promotion. By offering multi-level options in a variety of fields, students are provided the flexibility to achieve their goals within their own self-paced timeframe, anywhere from a few weeks in an online environment to a two-year degree based in the classroom. Regardless of the track or delivery model, SPC and the PCSDC will be focused on training that addresses the immediate needs of employers in the region.

**C. Describe how this proposal provides participants transferable, sustainable workforce skills applicable to more than a single employer.**

As a state college, St. Petersburg College is in the unique position to support the development and strengthening of Florida's workforce through the provision of a holistic educational and training model. The structure of SPC and **Pinellas County Security and Defense Center (PCSDC)** allows for rapid employment into high-wage, high-demand jobs through the attainment of a wide range of pertinent skills. The extensive list of occupations included in this project reflects the growing need for workers skilled in handling emergency situations with a multi-disciplinary, systems-thinking perspective. By incorporating hands-on simulation exercises into certificate and degree programs, the Center's activities will infuse trainees with identified needed soft skills for emergency management such as: making sound ethical decisions, rapid decision-making, strong and effective communication, problem solving, and team work. These skills will be transferrable across all emergency management sectors.

The design ultimately offers a series of interconnected, transferrable educational and training programs all along the pathway that result in industry recognized workforce certificates and certifications, Postsecondary Advanced Vocational (PSAV) Certificates, Associate degrees (AS), and Bachelor Degrees (BAS). The goal for students is to receive both college credit and industry recognized credentials, which can be used to build upon as they advance up the career ladder. For example, a student may enter the EMT training certificate program and, upon graduation, seek employment as an EMT. That certificate will then allow them to pursue the A.S. degree in Emergency Administration and Management while still employed, which could lead to an Advanced Training Certificate (ATC) in Emergency Management and an eventual Public Safety Administration or Health Services Administration Baccalaureate Degree.



**D. Does this proposal support a program(s) that is offered to the public?**

Yes    No

**E. Describe how this proposal is based on criteria established by the state colleges and state technical centers.**

The Florida State College system is responsive to the needs of both the public and private sectors in the state of Florida, and strives to align programs with industry-recognized certifications and credentials. The Florida Department of Education coordinates all industry certification alignment and provides oversight on federal or state regulatory agency, industry, proprietary, and third-party developed assessments leading to certification. SPC follows these regulatory guidelines to ensure that academic programs are responsive to employer needs and demand, resulting in students appropriately trained for high-wage, high-demand employment. Based on employer demand and advisory board feedback, SPC integrates industry-driven competencies into college curricula to ensure that students can obtain credentials valued by the labor market.

Each of the PSAV, certificate, and associate degree programs supported and developed under the PCSDC initiative are aligned to state curriculum frameworks determined by the Florida Department of Education and supported by the Florida College System. These frameworks define the content to be learned, clear standards and benchmarks for achievement, and assessments tied to those standards. Frameworks are assessed every three years to maintain compliance with industry standards and labor market needs. All programs of study within these frameworks must also include a pathway leading to a postsecondary credential (i.e. certificate, diploma, associate, or baccalaureate degree, industry certification, or licensure).

**F. Does this proposal support a program(s) that will not exclude unemployed or underemployed individuals?**

Yes    No

**G. Describe how this proposal will promote economic opportunity by enhancing workforce training. Please include the number of jobs anticipated to be created from the proposed training. Further, please include the economic impact on the community, region, or state and the associated metrics used to measure the success of the proposed training.**

Promoting Economic Opportunity

Homeland security, defense, and safety are top priorities and top business for Florida and the Tampa Bay region – and for good reason. By the year 2030, Florida is expected to add six million more residents and attract more than 150 million annual visitors<sup>14</sup>; Pinellas County accounts for upwards of 50,000 new residents each year. Pinellas and Tampa Bay are also major hubs for tourism, commerce, maritime activities, and defense centers. All of these additional residents, visitors, activities, and expanding cyber infrastructure needs will require additional personnel in order to be adequately prepared in the event of a disaster. The PCSDC program will ensure a steady pipeline of workforce-ready individuals at all levels of economic entry, boosting individual and regional financial gains.

According to a 2013 survey of Florida employers sent out by SPC and Valencia College, more than 80% of incumbent workers in law enforcement, corrections, and fire-fighting will require continuing education and

<sup>14</sup> Lamback, S. (2017). Florida Jobs 2030: A Cornerstone Series Report for the Florida 2030 Initiative. Tallahassee, FL: Florida Chamber Foundation. Retrieved from flchamber.com/wp-content/uploads/2017/01/Florida-Jobs-2030-Report-012617\_website.pdf



skills upgrade training to remain employed or advance in their field. For many of these sectors, two or four year degrees are required for promotional advancement. This program will allow incumbent workers to acquire certificates that stack toward an associate or baccalaureate degree in a flexible, responsive setting. Workers are able to sustain their employment while growing their expertise in emergency response. As these workers move up, entry-level personnel will be able to fill those vacancies, creating an even stronger economic impact.

The impact of cybersecurity related programs is also exponential. According to the Florida Center for Cybersecurity, “employers and the state economy will benefit from an infusion of new skills and knowledge, as well as the “multiplier-effect” that a cybersecurity workforce provides. It has been estimated that for every IT job created, an additional 1.58 jobs will be gained in a particular region.”<sup>15</sup>

Based on partner response as detailed in the attached letters of support, advisory board input, and job growth in targeted occupations, it is anticipated that the PCSDC will graduate more than **1,000** individuals across multiple targeted sectors for employment over the two year grant period, creating both a well-employed and well-prepared region. As trained individuals fill openings and move-up the employment pipeline, based on the job growth multiplier it can be estimated that this program will support the creation of upwards of 300 jobs. This is based on the program’s ability to help businesses address their workforce shortage and support industry growth. Finally, the training program will have potential for an immediate economic impact on Pinellas County training and services. The County spends an estimated \$620,000 per year on continuing education for county emergency personnel. By providing a conduit for training and re-certification, PCSDC will relieve a financial burden that could be used to support additional personnel in key sectors.

Success Metrics

The overarching mission of the PCSDC program is to support economic development and prosperity in Florida by enhancing regional infrastructure and training opportunities to ensure a prepared and ready workforce in the event of a homeland security event or natural disaster. In order to determine program efficacy and success of the proposed training, the following metrics will be tracked and analyzed:

Goal 1: Increase workforce opportunities and employment in homeland security and defense across all targeted occupations.

- Objective 1.1: Increase educational offerings through the development and enhancement of short-term certifications, PSAV, and degree programs.
- Objective 1.2: Increase student preparedness through hands-on experiential learning and simulations, providing transferable and sustainable workforce skills.
- Objective 1.3: Increase student enrollment, retention, and persistence in targeted programs.
- Objective 1.4: Increase employment in targeted sectors through job placement assistance.

Goal 2: Promote coordinated responsibility and strengthen agency collaboration for rapid response to attacks and disasters.

- Objective 2.1: Provide cross-agency training and collaboration through regional meetings and statewide summits.
- Objective 2.2: Enhance inter-agency collaboration through hands-on, regional simulations.

**2. Additional Information:**

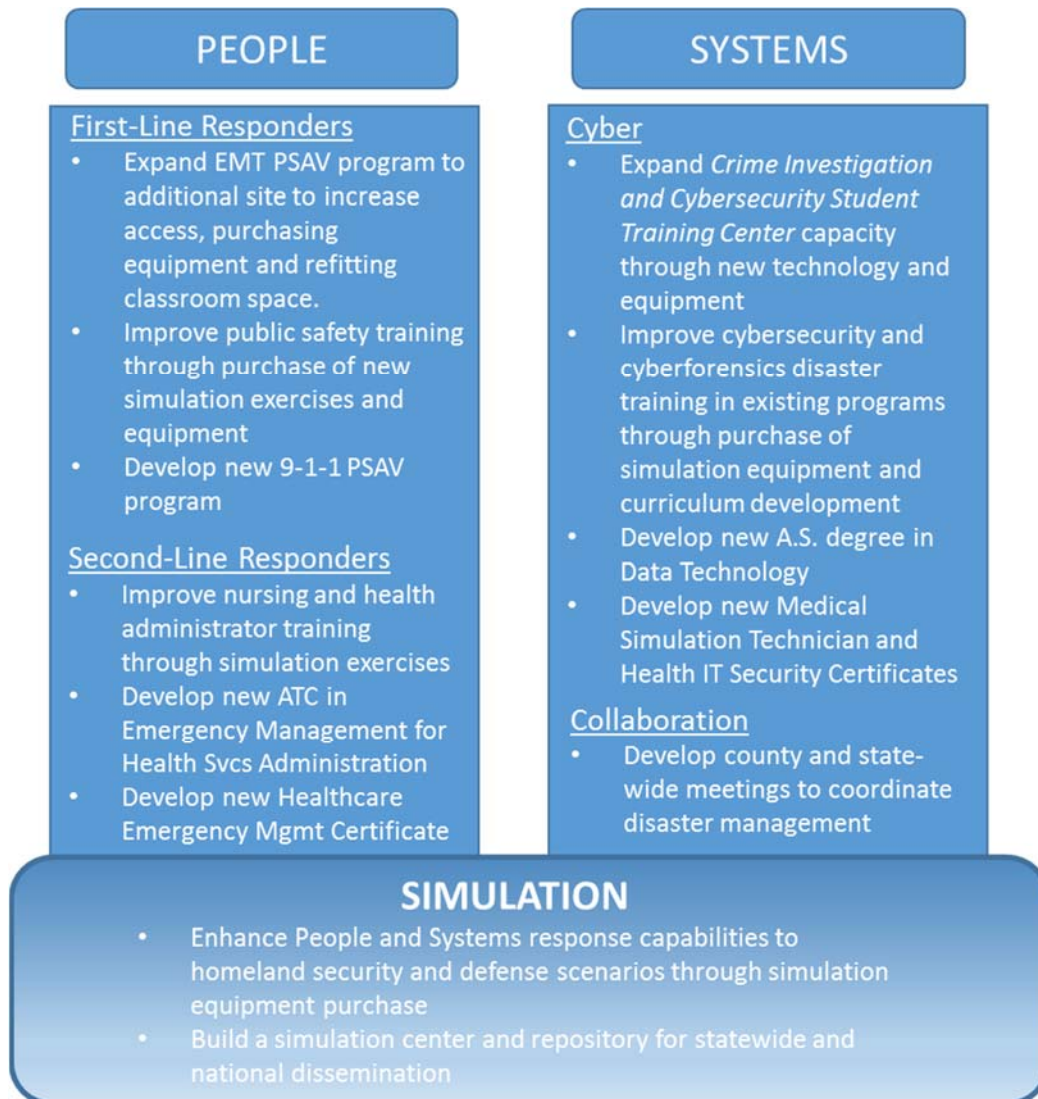
**A. Is this an expansion of an existing training program?**                     Yes     No

---

<sup>15</sup> State University System of Florida Board of Governors. (2013, December). *Florida Center for Cybersecurity: Making Florida the Cyber State*. Tallahassee, FL.

If yes, provide an explanation for how the funds from this grant will be used to enhance the existing program.

The PCSDC program represents an expansion and enhancement of multiple existing security and defense training programs at St. Petersburg College. Figure 1 demonstrates how each sector will be enhanced through grant funding.



B. Does the proposal align with Florida’s Targeted Industries? (View Florida’s Targeted Industries here.)

Yes     No

If yes, please indicate the targeted industries with which the proposal aligns. If no, with which industries does this proposal align?



The PCSDC proposal aligns directly with the identified targeted industry of *Homeland Security and Defense*. In particular, the proposed Center integrates occupations in this industry with the technological need for simulation and training, a need highlighted in Enterprise Florida’s list of Qualified Targeted Industries.

**C. Does the proposal align with an occupation(s) on the Statewide Demand Occupations List and/or the Regional Demand Occupations List? (View Florida’s Demand Occupation Lists here.)**

Yes     No

**If yes, please indicate the occupation(s) with which the proposal aligns. If no, with which occupation does the proposal align?**

The PCSDC program will strengthen a seamless talent supply chain that encapsulates a wide number of occupations related to homeland security and defense. Table 1 demonstrates the targeted occupations on the Statewide Demand Occupations and/or the Regional Demand Occupations Lists that will be served through the PCSDC program, including projected demand over the next six years. Other related security and defense occupations beyond those listed may also be targeted in order to be flexible and responsive to regional demand and emerging sectors, such as innovations in cybersecurity-related professions.

Table 1. Target Industries and Occupations; Current and Future Demand		Total Job Openings 2016-2024		% Growth 2016-2024	
		Pinellas	State	Pinellas	State
<b>11</b>	<b>Management Occupations</b>	140,623	2,766,050	12.2%	11.4%
11-3021	Computer and Information Systems Managers*	252	2,865	19.3%	16.8%
11-9111	Medical and Health Services Managers*	320	4,775	16.9%	16.9%
11-9151	Social and Community Services Managers*	78	1,412	15.5%	15.0%
<b>15</b>	<b>Computer and Mathematical Occupations</b>	4,192	54,069	16.7%	15.9%
15-1121	Computer Systems Analysts*	545	6,949	27.4%	22.8%
15-1122	Information Security Analysts*	109	1,299	21.1%	21.9%
15-1143	Computer Network Architects*	277	3,818	15.3%	12.5%
15-1151	Computer User Support Specialists*	762	8,694	16.5%	16.1%
15-1152	Computer Network Support Specialists*	177	2,301	14.8%	13.6%
<b>29</b>	<b>Healthcare Practitioners and Technical Occupations</b>	11,496	180,466	17.8%	16.9%
29-2041	Emergency Medical Technicians and Paramedics	324	2,973	23.2%	16.4%
29-2071	Medical Records and Health Information Technicians*	233	3,367	15.8%	15.3%
29-2099	Health Technologists and Technicians, All Other*	124	2,468	16.6%	18.5%
<b>33</b>	<b>Protective Service Occupations</b>	2,603	64,316	8.6%	8.6%
33-1011	First-Line Supervisors of Correctional Officers	9	518	6.7%	2.3%
33-1012	First-Line Supervisors of Police and Detectives	50	1,467	6.9%	6.5%
33-1021	First-Line Superv. of Fire Fighting and Prevention Workers	83	1,439	8.1%	9.3%
33-1099	First-Line Supervisors of Protective Service Workers, All Other	64	1,629	8.6%	10.1%
33-2011	Firefighters*	390	7,944	8.2%	9.3%
33-3012	Correctional Officers and Jailers*		8,985		3.4%
33-3051	Police and Sheriff's Patrol Officers*	683	14,693	8.0%	8.7%
33-9032	Security Guards	638	19,539	11.0%	11.5%
33-9093	Screeners, Transportation Security Administration	32	681	5.0%	1.2%
<b>43</b>	<b>Office and Administrative Support Occupations</b>	20,718	374,004	8.8%	7.9%
43-5031	Police, Fire and Ambulance Dispatchers	67	1,351	2.4%	1.1%

Source: Florida Department of Economic Opportunity Employment Projections Data - Statewide and WDA 14 Pinellas County

\* Denotes a Florida Department of Economic Opportunity 2017-2018 Regional Demand Occupation - Statewide and/or WDA 14 Pinellas County



**D. Indicate how the training will be delivered (e.g., classroom-based, computer-based, other).**

**If in-person, identify the location(s) (e.g., city, campus, etc.) where the training will be available.**

**If computer-based, identify the targeted location(s) (e.g., city, county, statewide) where the training will be available.**

In-person trainings, simulations, and classes will occur on multiple St. Petersburg College campus sites throughout Pinellas County. These sites include the Allstate Campus (south), Health Education Center (central), EpiCenter (central), and Tarpon Springs Campus (north). These campuses provide regional coverage and easy access for potential students and trainees. The simulation modules' mobile capabilities will also allow for in-person trainings and simulation exercises at first responder, emergency management, and municipal sites throughout the county.

Select courses, certificates, and degree programs will also be available online. Programming will primarily target Pinellas County residents, but will be able to service the entire state through online access. SPC has the largest online education program in the state of Florida, serving more than 20,000 students per year. By making trainings available online, PCSDC will enhance statewide capabilities in homeland security and defense training.

**E. Indicate the number of anticipated enrolled students and completers**

SPC anticipates enrolling **2,200** students in PCSDC programs, of which **1,000** will complete during the grant period. These students will be served in a range of degree, PSAV, credit and non-credit certificate courses identified in [Table 1](#), which will prepare students for the targeted occupations included in [Table 2](#). These numbers are cumulative for Years 1 and 2 of the grant, from September 2017—August 2019.

**F. Indicate the length of program (e.g., quarters, semesters, weeks, etc.), including anticipated beginning and ending dates.**

The length of individual programs under the PCSDC model vary depending on certificate or degree type. Program length ranges from one semester for certificates to two or more years for A.S. and B.A.S. degree programs.

**Begin Date:** September 1, 2017

**End Date:** August 31, 2019

**G. Describe the plan to support the sustainability of the proposal.**

The PCSDC is intended to be a long-term effort at St. Petersburg College and for Pinellas County. As an innovative center tied to nationally-recognized training entities such as the *Center for Public Safety Innovation*, the PCSDC will attract a wide cadre of new trainees and incumbent personnel, ultimately increasing enrollment and providing financial support for the program. The program also supports a train-the-trainer model in which faculty and staff will initially work with training consultants to provide simulations; these faculty and staff will then be able to teach those concepts moving forward, mitigating the financial cost of outside subject matter experts. Partnerships with local, county, and state municipal agencies as well as employers will provide opportunities for additional training and financial support as PCSDC will strive to meet continuing education needs after the grant funding period has concluded.



**H. Identify any certifications, degrees, etc. that will result from the completion of the program. Please include the Classification of Instructional Program (CIP) code if applicable.**

The PCSCD program targets occupations requiring credentials from entry level certifications, state licensure, and continuing education to college certificates and degrees. Table 2 outlines the relevant certificate and degree programs that participants will be eligible to complete by participating in this program.

<b>FL CIP CODE</b>	<b>Certificates</b>	<b>FL CIP CODE</b>	<b>Degrees</b>
<b>43</b>	<b>Public Safety/First Responder</b>	<b>43</b>	<b>Public Safety/First Responder</b>
0743011202	Homeland Security Certificate	1743020112	A.S. Fire Safety
0743030201	Emergency Administration and Management Certificate	1743030200	A.S. Emergency Administration and Management
0743010700	Law Enforcement Certificate	1743010300	A.S. Criminal Justice
0743010200	Corrections Officer Certificate	1104399991	B.A.S. Public Safety Administration
0743020312	Firefighter II Certificate	1743011601	A.S. Digital Forensics
0743039900	911 Operator Certificate*		
1743011601	Digital Forensics Certificate		
	Emergency Management Advanced Training Certificate		
<b>11</b>	<b>Computer and Information Sciences</b>	<b>11</b>	<b>Computer and Information Sciences</b>
0511100311	Cybersecurity Certificate	1511100307	A.S. Cybersecurity
		0511010309	A.S. Computer and Information Technology
		1511020101	A.S. Computer Programming and Analysis
		1511080102	A.S. Web Development
		1511010308	A.S. Data Technology*
		1101110991	B.A.S. Technology Development and Management
<b>51</b>	<b>Healthcare Practitioners and Technical Occupations</b>	<b>51</b>	<b>Healthcare Practitioners and Technical Occupations</b>
0351090405	Paramedic Certificate	1351070101	A.S. Health Sciences
0351090414	Emergency Medical Technician	1351090402	A.S. Emergency Medical Services
0311010200	Medical Education Simulation Technician	1105122111	B.A.S. Health Services Administration
0743030201	Healthcare Emergency Preparedness	1351380100	A.D.N. Nursing
0515120200	Health Information Security Technician	1105138012	B.S.N Nursing

*Source: National Center for Education Statistics*

*\*Indicates new certificate/degree program*

**I. Does this program have a local match amount?**  Yes  No

As detailed in the budget narrative below, St. Petersburg College (SPC) and partners have contributed to the total cost of the program. Additionally, the College will demonstrate a commitment to the execution of the programming through various levels of support, including contributing necessary resources such as staff time not funded through the program, office supplies and space.

**J. Provide any additional information or attachments to be considered for the proposal.**

Please see attached Letters of Commitment, which demonstrate a broad base of support for the PCSDC from community partners, industry, and government agencies, including:

- Tampa Bay Technology Forum (TBTF)
- BayCare Health System





- Sunstar Paramedics
- Pinellas County Emergency Management
- Pinellas County Safety & Emergency Services
- Largo Police Department
- St. Petersburg Police Department
- Clearwater Police Department
- Pinellas Park Police Department
- Pinellas County Sheriff's Office
- Pinellas County Fire Chiefs' Association

**3. Program Budget**

Estimated Costs and Sources of Funding: Include all applicable workforce training costs and other funding sources available to support the proposal.

A. Workforce Training Project Costs:		
Equipment	\$ 342,945	
Personnel	\$ 510,247	
Facilities	\$ 75,000	
Tuition	\$ 0	
Training Materials	\$ 144,472	
Other	\$ 480,345	Please Specify: Inclusive of travel, contractual, convenings, outreach and indirect costs. See detailed budget narrative below.
<b>Total Project Costs</b>	<b>\$ 1,553,009</b>	
B. Other Workforce Training Project Funding Sources:		
City/County	\$ 12,000	
Private Sources	\$	
Other (grants, etc.)	\$ 237,507	Please Specify: Collaborative lab match to facilitate convening and remainder of SPC Modified Indirect Cost Rate
<b>Total Other Funding</b>	<b>\$ 249,507</b>	
<b>Total Amount Requested</b>	<b>\$ 1,303,502</b>	

Note: The total amount requested must equal the difference between the workforce training project costs in 3.A. and the other workforce training project funding sources in 3.B.

**C. Provide a detailed budget narrative, including the timing and steps necessary to obtain the funding, how equipment purchases will be associated with the training program, if applicable, and any other pertinent budget-related information.**

St. Petersburg College is requesting funds to support the following budget items, which will facilitate the implementation of the *Pinellas County Security and Defense Center*. Budgeted funds are based on an estimated timeline of two years. SPC's grants accounting department has reviewed and approved the projected expenditures, which will expedite grant start-up. Personnel will be hired during the period in which their role will be needed across the two-year grant period. Facility renovations will take place in year 1 of the grant to ensure rapid start-up of the expanded EMS training program. Equipment purchases will be prioritized early in year 1 to reach additional students. The proper institutional procurement procedures and approvals, including a quote or bid process and review, will take place prior to the purchase/lease of all equipment.



	2017-2018 YEAR 1	2018-2019 YEAR 2	TOTAL
<b>EQUIPMENT - \$5,000+ unit cost</b>			
Equipment purchases will directly support the implementation of industry-specific trainings related to the credentials and occupations targeted by this grant and the needs of the Pinellas County Security and Defense Center. Equipment costs are estimated based on initial quotes that were sought from industry suppliers along with institutional faculty feedback, and include all units costing \$5,000 and above. Estimating equipment for EMT Training Program expansion @ <b>\$56,500</b> including multiple full body Manikins and stretchers to conduct emergency simulation scenarios. Estimating equipment related to cybersecurity training @ <b>\$64,495</b> including forensic training workstations and software to support cybersecurity and cyberforensics simulation training in the cybersecurity certificate and degree programs. Estimating public safety training equipment related to multidisciplinary training exercises emergency simulation training exercises including first and second-line responder certificate and degree programs @ <b>\$209,950</b> including portable radios (\$30,000), stationary mock-up for command vehicles (\$10,000), a full simulation portable command training system including virtual reality training platform with multiple units (\$150,000) and a 9-1-1 training station for security (\$19,950).	\$ 330,945	\$ -	\$ 330,945
<b>TOTAL EQUIPMENT</b>	<b>\$ 330,945</b>	<b>\$ -</b>	<b>\$ 330,945</b>

**PERSONNEL**

**Salaries/Stipends**

SPC is requesting grant funds to cover the salaries of the personnel needed to manage, implement, administer, and monitor this project over the grant period. This includes full-time equivalents (FTE) for direct services to fulfill lead and institutional training related activities and deliverables, as well as supplemental pay for additional subject matter experts.

**Fulltime Personnel:** EMS Program Support Coordinator – Responsible for overseeing EMS training program including student enrollment, equipment, and clinical sites. Estimating full time 12 months @ **\$49,734.05 in Y1 and \$50,728.73 in Y2** (2% COLA); Cyber Project Coordinator – Responsible for creating simulation scenarios, activities for the cybersecurity training lab and related certificates and degrees. Estimating full-time 12 months @ **\$49,734.05 in Y2**; EMS Faculty to instruct students completing training at additional campuses for increased enrollment and access. Estimating fulltime for 6 months @ **\$25,524 in Y1 and 12 months @ \$50,508 in Y2**; IT Faculty to instruct students completing degree training in cybersecurity and related IT courses for cyber program expansion. Estimating @ **\$50,508 in Y2.**

\$ 74,988    \$ 201,478    \$ 276,466



**Other Personnel:** Adjunct Faculty – To support the development and delivery of public safety and simulation trainings. Estimating base pay of \$25 per hour x 10 hours per week x 45 weeks each year @ **\$11,250**. Faculty Deliverables – Stipends for faculty to assist in development of career pathways, articulation agreements, courses, simulation scenarios and curriculum for new and enhanced homeland security and defense related programs. Estimating 14 deliverables per year @ \$1,306 each year @ **\$16,978**. Lab Assistant – Estimating 1.5 staff (OPS or Student Workers) to assist in the Cyber Training Lab oversight and development. Estimating base pay @ \$13.00/hr. x 60 hours per week x 38 weeks each year @ **\$29,640**.

	\$ 57,868	\$ 57,868	\$ 115,736
<b>Fringe Benefits</b>			
Estimating at 16% covering retirement and FICA/SS for other personnel including faculty deliverables, adjuncts, etc.	\$ 9,259	\$ 9,259	\$ 18,518
Estimating at 36.12% for health insurance, retirement, FICA/SSA for fulltime personnel	\$ 26,995	\$ 72,532	\$ 99,527
<b>TOTAL PERSONNEL</b>	<b>\$ 169,110</b>	<b>\$ 341,137</b>	<b>\$ 510,247</b>

#### FACILITIES

Estimating facility renovation costs to outfit Tarpon Springs Campus classroom for new EMT program. Renovations will support increased access and program capacity to meet regional training demands. Renovations will take place over the first six months to accommodate purchased equipment and students beginning served starting in the second half of Y1. This expansion requires facility renovation costs to repurpose classroom space to meet state standards. Renovation estimates are based on price quotes and previous renovation costs at the College.

	\$ 75,000	\$ -	\$ 75,000
<b>TOTAL FACILITIES</b>	<b>\$ 75,000</b>	<b>\$ -</b>	<b>\$ 75,000</b>

#### TUITION

N/A	\$ -	\$ -	\$ -
<b>TOTAL TUITION</b>	<b>\$ -</b>	<b>\$ -</b>	<b>\$ -</b>

#### TRAINING MATERIALS



SPC is requesting funds to support training and educational materials related to the associated public safety, cyber, and health administration certificate and degree programs included under this proposal. Educational supplies for EMT training and classroom demonstrations such as oxygen system, immobilization and extraction, splints, bandages, etc. estimated @ **\$9,450 in Y1**. Cybersecurity related classroom training materials such as computer application licenses/hardware, linux workstations, mobile phone examiners forensic analysis kits, video recorders, related licenses, etc. estimated @ **at \$ 59,925 in Y1 and \$2,097 in Y2**. To enhance public safety simulation activities estimated @ **\$3,000 in Y1** for classroom projectors, as well as **\$35,000 in Y1 and \$35,000 in Y2** for the simulation system training and support package.

	\$ 107,375	\$ 37,097	\$ 144,472
<b>TOTAL TRAINING MATERIALS</b>	<b>\$ 107,375</b>	<b>\$ 37,097</b>	<b>\$ 144,472</b>

**OTHER DIRECT COSTS**

**Other-Travel:** Estimated for anticipated in-district and out-of-district mileage for program staff to travel between campuses and to meetings and trainings, as well as travel for simulation equipment transport between campuses and to off-site locations for trainings. Based on State of Florida mileage reimbursement rate of \$.445/mile. Estimated @ **\$7,136 per year**.

\$ 7,136	\$ 7,136	\$ 14,272
----------	----------	-----------

**Other-Contractual:** Contracts to support elements of the EMS program expansion for EMT certificate trainings, such as training platforms, student test prep courses, medical director oversight fee, bio-hazardous waste disposal, supply stock level maintenance account, etc. Estimated @ **\$20,660 in Y1 and \$27,660 in Y2**.

Contracts to support outside trainers to facilitate lab exercises and train-the-trainer sessions estimated @ \$2,500 per training x 2 trainings per year @ **\$5,000 in Y1 and \$5,000 in Y2**.

\$ 25,660	\$ 32,660	\$ 58,320
-----------	-----------	-----------

**Other-Convenings (Collaborative Labs):** Estimated cost for convenings for local and regional meetings of emergency management personnel, as well as statewide summit on emergency management and preparedness. All-inclusive cost estimated @ **\$14,000 in Y1 and \$10,000 in Y2**.

\$ 14,000	\$ 10,000	\$ 24,000
-----------	-----------	-----------

**Other-Outreach:** Estimated costs for comprehensive outreach and marketing related to new certificate and degree programs and simulation exercises. Program marketing will increase public awareness and enrollment in programs. Estimated @ **\$15,000 in Y1 and \$7,000 in Y2**.

\$ 15,000	\$ 7,000	\$ 22,000
-----------	----------	-----------

**Other-Indirect Costs:** Requesting **15% of Modified Total Direct Costs** for onsite direct costs less equipment, tuition and contracts >\$25k for indirect and administrative costs associated with the grant. The full rate negotiated with U.S. Health and Human Services is 33%. The balance of the indirect costs is contributed to the project as Other Fund Sources.

\$ 60,492	\$ 63,754	\$ 124,246
-----------	-----------	------------

<b>TOTAL OTHER</b>	<b>\$ 122,288</b>	<b>\$ 120,550</b>	<b>\$ 242,838</b>
--------------------	-------------------	-------------------	-------------------



<b>TOTAL PROJECT COSTS</b>	<b>\$ 804,718</b>	<b>\$ 498,784</b>	<b>\$ 1,303,502</b>
----------------------------	-------------------	-------------------	---------------------

<b>OTHER WORKFORCE TRAINING PROJECT FUNDING SOURCES</b>			
---	--	--	--

City/County- Computer Aided Dispatch (CAD) system for 9-1-1 Operator Training	\$12,000	\$0	\$12,000
Private - Silverberg Endowment Grant in support of Electronic Crime Investigation Student Training Lab	\$5,000	\$0	\$5,000
Other - Remaining cost of local and regional meetings/summits related to simulation and emergency preparedness	\$11,000	\$15,000	\$26,000
Other- 18% Indirect Costs not charged to grant contributed by SPC	\$100,700	\$105,807	\$206,507
<b>TOTAL OTHER FUNDING SOURCES</b>	<b>\$ 128,700</b>	<b>\$ 120,807</b>	<b>\$ 249,507</b>

<b>A. TOTAL WORKFORCE TRAINING PROGRAM COSTS</b>	<b>\$ 933,418</b>	<b>\$ 619,591</b>	<b>\$ 1,553,009</b>
<b>B. TOTAL OTHER WORKFORCE TRAINING PROJECT FUNDING SOURCES</b>	<b>\$ 128,700</b>	<b>\$ 120,807</b>	<b>\$ 249,507</b>
<b>TOTAL AMOUNT REQUESTED</b>	<b>\$ 804,718</b>	<b>\$ 498,784</b>	<b>\$ 1,303,502</b>

**4. Approvals and Authority**

**A. If entity is awarded grant funds based on this proposal, what approvals must be obtained before it can execute a grant agreement with the Florida Department of Economic Opportunity (e.g., approval of a board, commission or council)?**

All grant funds St. Petersburg College applies for are submitted for pre-approval by the President and the Board of Trustees (BOT). Therefore, they are pre-approved even before the College receives notification of an award or rejection. This approval affords the College to accept the funding, enter into any amendments, extensions or agreements as necessary, within the original intent and purpose of the grant. Applications also are reviewed by the College's General Counsel Office. A second or follow-up approval by the BOT is not needed if and when an award is made. These measures, part of the College's grant policy, will be followed for a Florida Department of Economic Opportunity agreement, should the agency fund the College's proposal.

**B. If approval of a board, commission, council or other group is needed prior to execution of an agreement between the entity and the Florida Department of Economic Opportunity:**

**i. Provide the schedule of upcoming meetings for the group for a period of at least six months**

The Board of Trustees meets every third Tuesday of the month. Upcoming meetings will be: August 15, 2017; September 19, 2017; October 17, 2017; November 21, 2017; January 21, 2018; February 20, 2018.

**ii. State whether that group can hold special meetings, and if so, upon how many days' notice.**

The Board of Trustees can hold special meetings, but they are approved at the board's annual Organizational Meeting, held in August. All meetings require a seven-day notice.



- C. Attach evidence that the undersigned has all necessary authority to execute this proposal on behalf of the entity. This evidence may take a variety of forms, including but not limited to: delegation of authority, citation to relevant laws or codes, policy documents, etc.**

Please see attached documented evidence of signing authority.



I, the undersigned, do hereby certify that I have express authority to sign this proposal on behalf of the above-described entity.

Name of Entity: Board of Trustees of St. Petersburg College (SPC)

Name and Title of Authorized Representative: Dr. Tonjua Williams, SPC President

Representative Signature: Tonjua Williams

Signature Date: 8/3/17



## ATTACHMENT A: LETTERS OF SUPPORT

---

1. Tampa Bay Technology Forum (TBTF)
2. BayCare Health System
3. Sunstar Paramedics
4. Pinellas County Emergency Management
5. Pinellas County Safety & Emergency Services
6. Largo Police Department
7. St. Petersburg Police Department
8. Clearwater Police Department
9. Pinellas Park Police Department
10. Pinellas County Sheriff's Office
11. Pinellas County Fire Chiefs' Association





August 2, 2017

Cissy Proctor  
Executive Director  
Florida Department of Economic Opportunity  
107 East Madison Street  
Caldwell Building  
Tallahassee, FL 32399-4120

Re: Letter of Commitment for Florida Job Growth Grant Fund Workforce Training Grant Proposal

Dear Ms. Proctor:

On behalf of the Tampa Bay Technology Forum (TBTF), I am excited to extend our commitment to St. Petersburg College and its Florida Job Growth Grant Fund Workforce Training proposal for the *Pinellas County Security and Defense Center (PCSDC)*. We strongly believe this innovative program will help strengthen the education and workforce opportunities for students in high-demand cybersecurity and cyberforensics industries in Tampa Bay and throughout the state of Florida.

TBTF is Tampa Bay's technology council with a membership representing over 200 of the region's largest and fastest-growing technology companies. We are committed to uniting the area's technology leaders and to growing and promoting Tampa Bay's innovation and technology "ecosystem" through events, education, networking, advocacy and more. We steadily look for ways to grow and retain the IT talent pool and offer employers innovative ways to serve its workforce, and consistently collaborate with St. Petersburg College to this end.

As a leading IT consortium, we directly understand the impact that cyberterrorism can have on both national infrastructure and industries. This has been a critical concern for our members, and the need for well-trained personnel able to rapidly respond to cyberattacks is growing exponentially. Programs like the PCSDC and experiential learning included in the expansion of SPC's innovative *Crime Investigation and Cybersecurity Training Center* will greatly increase students' skills and employability, filling demand for highly-qualified IT specialists in this region.

In support of the *Pinellas County Security and Defense Center*, TBTF commits to working with the Center's faculty and staff and leveraging our membership connections to identify industries with potential internship placements or job shadowing openings, particularly with those industries that include a direct emphasis on cybersecurity training.

Thank you for your consideration of St. Petersburg College for your grant program. These educational and career exploration opportunities are critically important, and we strongly believe TBTF can play an impactful role in partnering with the Center to support IT careers and improve security and defense in our region.

Sincerely,

A handwritten signature in blue ink that reads "Jeff Alagood".

Jeff Alagood  
COO, AgileThought  
2017 Chair, Tampa Bay Technology Forum

A handwritten signature in blue ink that reads "Dan. J. Scott".

Daniel James Scott  
Executive Director  
Tampa Bay Technology Forum

August 3, 2017

Cissy Proctor  
Executive Director  
Florida Department of Economic Opportunity  
107 East Madison Street  
Caldwell Building  
Tallahassee, FL 32399-4120

Re: Letter of Commitment for Florida Job Growth Grant Fund Workforce Training Grant Proposal

Dear Ms. Proctor:

**BayCare Health System** extends its full support to St. Petersburg College (SPC) and its *Pinellas County Security and Defense Center* proposal for the Florida Job Growth Grant Fund. We strongly believe this program will have a positive impact on our local economy and help both job seekers and employers in public safety and emergency preparedness. The efforts proposed in this project will strengthen the regional workforce and allow security, defense and health organizations to better protect and serve our communities.

As the leading community-based health system in the Tampa Bay area, BayCare is cognizant of the need for skilled workers with emergency preparedness training. These skills are transferable, sustainable and in high demand for multiple interconnected industries like security, healthcare and IT. We are especially pleased to see SPC offer cybersecurity training and credentials with the *Pinellas County Security and Defense Center*. Cyber threats can pose as much harm as physical ones. The healthcare industry has invested and will continue to invest heavily in cybersecurity initiatives and training to protect our information systems and bolster patient privacy.

BayCare Health Systems has more than 100 locations throughout the Tampa Bay area, connecting patients to a complete range of preventative, diagnostic and treatment services for any health need. Our network includes 13 not-for-profit hospitals, outpatient facilities and services such as imaging, lab, behavioral health and home health care. The demand is high for our quality facilities and services due to a number of factors – from Florida's aging population requiring more care to changing care delivery models and the variable economic drivers of Medicare and Medicaid. To meet that demand, BayCare must be able to fill openings with skilled workers.

Participants who successfully complete training through the *Pinellas County Security and Defense Center* and who have an understanding of emergency preparedness and cybersecurity will have a competitive advantage over other applicants vying for our high-wage, high-skill jobs in both healthcare and cybersecurity. Please accept this letter as assurance that we will enthusiastically consider supporting the *Pinellas County Security and Defense Center* program in the following ways:

- Serve in an advisory capacity for and review program or training content, and
- Participate in collaborative meetings on emergency management/preparedness coordination with other community partners.

Thank you for your consideration of this worthwhile initiative. We have long partnered with SPC on its extensive education and workforce programs, and look forward to continuing that work together in support of the Florida Job Growth Grant.

Sincerely,



Walter Barrionuevo

Director, Clinical Engineering / Medical Device Integration & Security / Client Services  
End-User and Infrastructure Services (EIS) | BayCare Health System



July 28, 2017

Cissy Proctor  
Executive Director  
Florida Department of Economic Opportunity  
107 East Madison Street  
Caldwell Building  
Tallahassee, FL 32399-4120

Re: Letter of Commitment for Florida Job Growth Grant Fund Workforce Training Grant Proposal

Dear Ms. Proctor:

Sunstar Paramedics extends its full support to St. Petersburg College (SPC) and the College's Florida Job Growth Grant Fund proposal to expand training opportunities for those seeking a high-demand career in the key industries of homeland security and defense. SPC's proposed *Pinellas County Security and Defense Center* will greatly bolster our region's emergency and disaster preparedness capabilities. It also will help agencies like Sunstar find new hires that have the critical skills needed to protect citizens and visitors of the Tampa Bay region.

Since 2004, Paramedics Plus has been proudly serving the Pinellas County community operating Sunstar. We have been recognized, both locally and nationally, dozens of times for the outstanding level of care our highly skilled team of emergency medical technicians (EMTs) and Paramedics provide. We are pleased to see SPC include EMT as a targeted occupation for the Center. We have partnered with the College previously on successful training initiatives. We also are engaged on SPC's EMS Advisory Committee and are excited about this new opportunity.

The Pinellas County Security and Defense Center will offer quality training and skills-building to participants. SPC has brought multiple local and state stakeholders to the table to strengthen its efforts and propose dynamic training opportunities, including countywide training convening events and a potential statewide summit.

Those who successfully complete training at the Pinellas County Security Defense Center will be more than ready to enter the workforce. Sunstar will consider hiring these graduates to join our highly skilled team.

Thank you for reviewing this letter and SPC's proposal for this important program to support growth and employment in Florida's diverse industries. Sunstar Paramedics works hard to provide compassionate quality care and service built around the needs of the patients and communities we serve through effective partnerships. The Pinellas County Security and Defense Center is an exciting new partnership opportunity to expand EMT training and training in similar disciplines for our area.

Sincerely,

A handwritten signature in blue ink, appearing to read "John Peterson", is written over a light blue horizontal line.

John Peterson, M.S., M.B.A.  
Chief Administrative Officer  
Sunstar Paramedics  
(727) 729-2269

12490 Ulmerton Rd.  
Largo, FL 33774  
(727) 582-2090  
Fax (727) 582-2249  
[www.sunstarems.com](http://www.sunstarems.com)

**BOARD OF COUNTY  
COMMISSIONERS**

Dave Eggers  
Pat Gerard  
Charlie Justice  
Janet C. Long  
John Morroni  
Karen Williams Seel  
Kenneth T. Welch



July 27, 2017

Cissy Proctor  
Executive Director  
Florida Department of Economic Opportunity  
107 East Madison Street, Caldwell Building  
Tallahassee, FL 32399-4120

Dear Ms. Proctor:

On behalf of **Pinellas County Emergency Management**, I am pleased to proffer this letter of support for St. Petersburg College's (SPC) Florida Job Growth Grant Fund proposal to increase training opportunities for job seekers in the key industries of homeland security and defense. I believe that SPC's proposed *Pinellas County Security and Defense Center* will strengthen our region's workforce for skilled emergency and disaster preparedness personnel, as well as our Comprehensive Emergency Management Plan and our work with municipal, state and federal partners.

Our county relies on skilled and trained emergency workers and responders. Therefore, we are appreciative that SPC is working to ensure this pool of prospective workers grows, and when they enter the workplace, they are equipped with quality training and high-demand skills.

We understand that the Pinellas County Security and Defense Center will support the coordination of systems, countywide, so all agencies are better prepared to respond to crises. The Pinellas County Security and Defense Center also will align with other leading homeland security programs across the country. The College has engaged multiple local and state partners to have an active role in the implementation of this truly collaborative training center.

In closing, I would like to express my gratitude to the Florida Department of Economic Opportunity for this important program to support growth and employment. SPC has targeted homeland security and defense for this proposal for good reason – it has long been identified as a leading industry cluster for Florida, with dynamic businesses and employees contributing to the state's economic competitiveness and success. Pinellas County Emergency Management strongly supports all efforts to expand security and defense training in our region and beyond.

Sincerely,

A handwritten signature in black ink that reads "Sally Bishop".

Sally Bishop  
Director

Pinellas County Emergency Management  
10750 Ulmerton Road  
Building 1 • Suite 267  
Largo, FL 33778  
Main Office: (727) 464-3800  
FAX: (727) 464-4024  
V/TDD: (727) 464-4062

[www.pinellascounty.org](http://www.pinellascounty.org)

**BOARD OF COUNTY  
COMMISSIONERS**

Dave Eggers  
Pat Gerard  
Charlie Justice  
Janet C. Long  
John Morroni  
Karen Williams Seel  
Kenneth T. Welch

July 24, 2017



Cissy Proctor  
Executive Director  
Florida Department of Economic Opportunity  
107 East Madison Street  
Caldwell Building  
Tallahassee, FL 32399-4120

Re: Letter of Commitment for Florida Job Growth Grant Fund Workforce Training Grant Proposal

Dear Ms. Proctor:

It is my pleasure, on behalf of **Pinellas County Safety & Emergency Services**, to support St. Petersburg College's (SPC) Florida Job Growth Grant Fund proposal to increase training opportunities for job seekers in homeland security and defense – two industries that are vital in growing the state's economy. SPC's proposed *Pinellas County Security and Defense Center* will help individuals gain transferable and sustainable workforce skills that are needed for all those who protect our communities and assess and prevent threats.

The Safety & Emergency Services Department coordinates a diverse set of programs geared towards ensuring effective and efficient public safety for residents and visitors within Pinellas County. Our staff works to provide significant support – operational, technology and funding – to fire, EMS and law enforcement agencies. The Department manages these functions through various divisions, each with a specific role. Safety & Emergency Services works closely with public safety agencies to ensure successful collaboration throughout the county.

We commend SPC in bringing stakeholders together across the region and state in offering collaborative emergency services training. We understand that the Pinellas County Security and Defense Center will give participants the education, training and/or credentials needed to start a career in security and defense or receive further training to advance in their career. We are particularly excited about your plans to include a 911 training program and expansion of your EMS training services.

Thank you for reviewing this letter and SPC's proposal for this important program to support growth and employment in Florida's diverse industries. Homeland security and defense has been identified as a leading industry cluster for Florida, largely contributing to our state's economic competitiveness and success. We are excited to support SPC and its efforts to expand this training in our county and beyond.

Sincerely,

  
James G. Fogarty  
Bureau Director

Safety and Emergency Services  
10750 Ulmerton Road  
Building 1 • Suite 343  
Largo, FL 33778  
Main Office: (727) 464-3860

[www.pinellascounty.org](http://www.pinellascounty.org)

POST OFFICE BOX 296,  
LARGO, FLORIDA  
33779-0296

# CITY of LARGO



---

LARGO, FLORIDA EST. 1905

---

Police Department  
Jeffrey K. Undestad, Chief  
727-586-7427

July 27, 2017

Cissy Proctor, Executive Director, Florida Department of Economic Opportunity  
107 East Madison Street  
Caldwell Building  
Tallahassee, FL 32399-4120

Re: Letter of Commitment for Florida Job Growth Grant Fund Workforce Training Grant Proposal

Dear Ms. Proctor:

On behalf of the Largo Police Department, I am pleased to express my support for St. Petersburg College (SPC) and its Florida Job Growth Grant Fund Workforce Training proposal for the *Pinellas County Security and Defense Center*. This project will provide job seekers with transferable, sustainable workforce skills in the critical industries of homeland security and defense. I am deeply cognizant of the need for highly trained police and emergency personnel to protect our citizenry and assess and prevent threats, both physical and cyber.

To help SPC sufficiently train first responders and 911 operators, the Largo Police Department is committed to donating access to a computer-aided dispatch (CAD) system to the College. This piece of equipment, valued at \$12,000, will allow instructors to deliver dynamic, real world training to participants in the Florida Job Growth Workforce Training program and lead to a postsecondary adult vocational certificate as a public safety telecommunicator/emergency 911 dispatcher.

The City of Largo enjoys an outstanding, long-lasting relationship with SPC. We are engaged on multiple advisory committees and have worked with the College on internship and student volunteer initiatives. Multiple city department also have hired SPC graduates who are trained in various municipal capacities, from IT to public safety.

In closing, I would like to thank you for considering SPC for this important program to support growth and employment in Florida's diverse industries. Homeland security and defense has been identified as a leading industry cluster for Florida, largely contributing to our state's economic competitiveness and success. The Largo Police Department is proud to support SPC and its efforts to expand this training in the Tampa Bay area and beyond.

Sincerely,

Jeffrey K. Undestad  
Chief of Police



## ST. PETERSBURG POLICE DEPARTMENT

Anthony Holloway, Chief of Police

1300 First Avenue North, St. Petersburg, Florida 33705

Telephone: (727) 893-7780

[www.stpete.org/police](http://www.stpete.org/police)

July 27, 2017

Cissy Proctor  
Executive Director  
Florida Department of Economic Opportunity  
107 East Madison Street  
Caldwell Building  
Tallahassee, FL 32399-4120

**Re: Letter of Commitment for Florida Job Growth Grant Fund Workforce Training Grant Proposal**

Dear Ms. Proctor:

On behalf of the **St. Petersburg Police Department** (SPD), it is my pleasure to offer this letter of support for St. Petersburg College (SPC) and its proposal for the Florida Job Growth Grant Fund Workforce Training program. SPC has proposed implementing the *Pinellas County Security and Defense Center*, which will have a positive impact on economic development in our region by preparing a workforce of individuals with the skills, degrees, and/or credentials needed for employment in the critical industries of public safety, homeland security and defense.

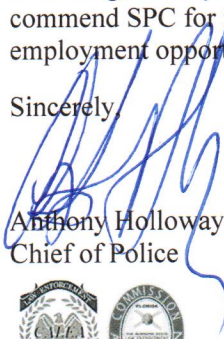
The mission of the St. Petersburg Police Department is to deliver professional police services, to protect and ensure the safety of the community, to enforce laws and preserve the peace, and to protect the rights of all citizens by policing with the tenets of loyalty, integrity, and honor. We work tirelessly with other community organizations and other local, state and national partners on public safety, police education and outreach and career enhancement projects.

We have a long standing relationship with SPC, which has several campuses within the city limits of St. Petersburg, including its Center for Public Safety Innovation. Our command staff serves or have served on SPC's Florida Regional Community Policing Institute Advisory Committee. Therefore, we know first-hand that the College offers top notch training to those individuals seeking a career and/or advancement with the fields of law enforcement and public safety.

Quality training opportunities for individuals considering a dynamic and rewarding career in security and defense are needed to meet the growing demand for public safety. Protection is not just against physical threats but also cyber. The Pinellas County Security and Defense Center will offer that comprehensive, collaborative training to be utilized across the region and state.

In closing, thank you for your careful review of this letter and of SPC's proposal for the Florida Job Growth Grant program. I commend SPC for its proposal and its efforts already to engage multiple community partners to support new training and employment opportunities in homeland security and defense through the Pinellas County Security and Defense Center.

Sincerely,

  
Anthony Holloway  
Chief of Police



A NATIONAL AND STATE ACCREDITED LAW ENFORCEMENT AGENCY



# CITY OF CLEARWATER

POST OFFICE BOX 4748, CLEARWATER, FLORIDA 33758-4748  
CLEARWATER POLICE DEPARTMENT, 645 PIERCE STREET, CLEARWATER, FLORIDA 33756  
TELEPHONE (727) 562-4336

OFFICE OF THE CHIEF  
OF POLICE

July 28, 2017

Cissy Proctor  
Executive Director  
Florida Department of Economic Opportunity  
107 East Madison Street  
Caldwell Building  
Tallahassee, FL 32399-4120

Re: Letter of Commitment for Florida Job Growth Grant Fund Workforce Training Grant Proposal

Dear Ms. Proctor:

On behalf of the Clearwater Police Department (CPD), it is my pleasure to pledge our support for St. Petersburg College's (SPC) proposal for the Florida Job Growth Grant Fund Workforce Training program for the *Pinellas County Security and Defense Center*. This project will have a positive impact on economic development in our region by preparing a workforce of individuals with the skills, degrees, and/or credentials needed for employment in the critical industries of homeland security and defense.

The mission of CPD is to consistently provide effective, professional and dependable law enforcement services to every citizen, visitor and business within the city of Clearwater. Those services are often aided through collaboration with other community organizations, businesses and institutions. We have a long standing history of working closely together with SPC on police education and career enhancement projects. Our command staff serves or has served on SPC's Florida Regional Community Policing Institute Advisory Committee. We know first-hand that the college offers top notch training to those individuals seeking a career and/or advancement with the fields of law enforcement and public safety.

Our department is always actively looking for new opportunities to expand the capabilities of Clearwater's brave men and women on the force, improve the skills of the regional public safety workforce and provide enhanced services for our citizens and visitors. We strongly believe the Pinellas County Security and Defense Center has the potential to do all three in addition to meeting the growing demand for workers in the interconnected industries of homeland security, defense, IT and more.

Thank you for your careful review of this letter and of SPC's proposal for the Florida Job Growth Grant program. Please know that SPC has many engaged partners that will support it to grow training and employment opportunities in the Tampa Bay area in homeland security and defense.

Sincerely,

A handwritten signature in blue ink, appearing to read "Daniel W. Slaughter".

Daniel W. Slaughter  
Chief of Police





City of  
**PINELLAS PARK**

POLICE DEPT. 7700 - 59th STREET • 33781



**FLORIDA**

PHONE • (727) 369-7864

July 31, 2017

Cissy Proctor  
Executive Director  
Florida Department of Economic Opportunity  
107 East Madison Street  
Caldwell Building  
Tallahassee, FL 32399-4120

Re: Letter of Commitment for Florida Job Growth Grant Fund Workforce Training Grant Proposal

Dear Ms. Proctor:

On behalf of the dedicated officers and civilian staff of the **Pinellas Park Police Department**, I am pleased to support St. Petersburg College (SPC) and its Florida Job Growth Grant Fund Workforce Training proposal for the *Pinellas County Security and Defense Center*. This project will provide job seekers with transferable, sustainable skills in the critical industries of homeland security and defense, allowing them to be prepared to enter the workforce and fill job openings across the region and state. It will also provide critical coordination training for first line responders like our police force and better equip our region to respond to a natural or man-made disasters.

The brave men and women of the Pinellas Park Police Department are highly trained and skilled, allowing them to provide exceptional service, ensure public safety and enhance the quality of life in our community. We have worked with SPC on numerous community and training initiatives, and our command staff serves or have served in an advisory capacity with the College's Center for Public Safety Innovation. Therefore, we can attest that SPC has the vision, personnel and commitment to successfully implement the Pinellas County Security and Defense Center.

We understand that this Center will boost training opportunities for individuals seeking a career in homeland security and defense and various interconnected industries. The skills offered at the Center are in high demand from first responder agencies like ours as well as private businesses and companies in the security, defense and IT industries.

★ *Integrity, Service, Professionalism, and Dedication.* ★

In closing, I would like to extend my gratitude to the Florida Department of Economic Opportunity for considering SPC for this important program to support growth and employment in Florida's diverse industries. Homeland security and defense has been identified as a leading industry cluster for Florida, largely contributing to our state's economic competitiveness and success. The Pinellas Park Police Department is proud to support SPC and its efforts to expand this training in the Tampa Bay area and beyond.

Sincerely,

A handwritten signature in black ink, appearing to read "Chief M. L. Haworth", written in a cursive style.

Chief Michael L. Haworth  
Pinellas Park Police Department



## Sheriff Bob Gualtieri

### Pinellas County Sheriff's Office

*"Leading The Way For A Safer Pinellas"*

August 1, 2017

Cissy Proctor  
Executive Director  
Florida Department of Economic Opportunity  
107 East Madison Street  
Caldwell Building  
Tallahassee, FL 32399-4120

Re: Letter of Support for Florida Job Growth Grant Fund Workforce Training Grant Proposal

Dear Ms. Proctor:

On behalf of the Pinellas County Sheriff's Office, I am pleased to support St. Petersburg College (SPC) and its Florida Job Growth Grant Fund Workforce Training proposal for the *Pinellas County Security and Defense Center*. This proposal will help job seekers gain transferable, sustainable workforce skills in the key industries of homeland security and defense. As the Sheriff of an agency with more than 2,700 employees, I am fully aware of the impact a highly trained staff has in carrying out our sworn duty to protect and serve our communities.

The Pinellas County Sheriff's Office has long partnered with SPC on public safety initiatives. Our executive and command staff serve in an advisory capacity on committees at the college's Community Policing Institute and work with SPC staff to ensure college employees and students are cognizant of the social services and resources we offer. We also have hired graduates of, and helped our employees attain continuing education and training at, the college's Center for Public Safety Innovation.

We are confident SPC has the vision, personnel and ability to successfully implement the Pinellas County Security and Defense Center, which will provide dynamic, real world training to participants seeking a career in security and defense and various interconnected industries. We are pleased that this Center will align with our efforts to increase training in specialized fields, particularly with the Criminal Investigations and Cybersecurity Student Training Center that we manage as a partnership with the United States Secret Service. The expansion of the Cybersecurity Student Training Center under this project will boost training for targeted occupations in cybersecurity and assist our deputies as well as national law enforcement in protecting citizens and assessing and preventing threats online.

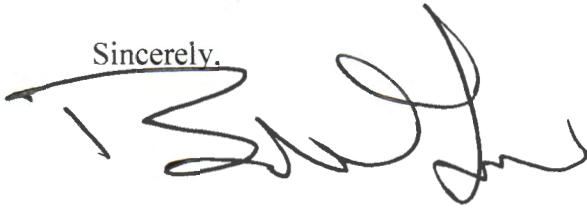
I would like to thank you for considering SPC for this important program to support growth and employment in Florida's diverse industries. Homeland security and defense has been identified as

August 1, 2017

Page 2

a leading industry cluster for Florida, largely contributing to our State's economic competitiveness and success. The Pinellas County Sheriff's Office is proud to support SPC and its efforts to expand this training in the Tampa Bay area and beyond.

Sincerely,

A handwritten signature in black ink, appearing to read 'Bob Gaultieri', written over a horizontal line.

Sheriff Bob Gaultieri  
Pinellas County, Florida

BG/lc



# FIRE CHIEF'S ASSOCIATION

## PINELLAS COUNTY FLORIDA

July 24, 2017

Cissy Proctor  
Executive Director  
Florida Department of Economic Opportunity  
107 East Madison Street  
Caldwell Building  
Tallahassee, FL 32399-4120

Re: Letter of Commitment for Florida Job Growth Grant Fund Workforce Training Grant Proposal

Dear Ms. Proctor:

The Pinellas County Fire Chiefs' Association is pleased to offer its full support for St. Petersburg College's (SPC) Florida Job Growth Grant Fund proposal to boost training opportunities for job seekers in the key industries of homeland security and defense. SPC's proposed Pinellas County Security and Defense Center will add tremendous strength to our region in emergency and disaster preparedness and will help our agencies protect citizens and visitors of the Tampa Bay region.

The mission of the Pinellas County Fire Chiefs' Association is to protect the lives and property of people from fires, natural disasters and hazardous materials incidents, to save lives by providing emergency medical services and to prevent fires through prevention and education programs. Our membership comprises 18 different fire departments throughout our heavily-populated and visited county. We are pleased this proposal will bring stakeholders together across the region and state in offering collaborative emergency services training.

Our agencies will consider hiring those who successfully complete this program. Our departments, like others across the state and country, want to be able to fill vacancies or openings caused by retirements with skilled and trained personnel. We are pleased that this Florida Job Growth Grant program will support our efforts to hire and maintain a highly trained team.

Thank you for reviewing this letter and SPC's proposal for this important program to support growth and employment in Florida's diverse industries. Homeland security and defense has been identified as a leading industry cluster for Florida, largely contributing to our state's economic competitiveness and success. The Pinellas County Fire Chiefs' Association is proud to support SPC and its efforts to expand this training in the Tampa Bay area and beyond.

Sincerely,

Richard E. Graham, Fire Chief  
President

President  
Richard Graham

Vice President  
Joe Acetto

Secretary/Treasurer  
Tom Jamison

Director at Large  
Heather Burford



---

**ATTACHMENT B: 4.C. Evidence of Authority to Execute Proposal**

---

1. Board of Trustees of St. Petersburg College Rules and College Procedures: 6Hx23-1.06 – Responsibility and Authority of the President

# RULE

SUBJECT	RESPONSIBILITY AND AUTHORITY OF THE PRESIDENT	PAGE
		1.06-1
LEGAL AUTHORITY	6Hx23-1.06	10/13/15 Revision #15-10

## 6Hx23-1.06 RESPONSIBILITY AND AUTHORITY OF THE PRESIDENT

- I. The Board of Trustees delegates to the President administrative authority over the College and holds the President responsible for the efficient direction and operation of the College pursuant to federal and state law, the rules of the State Board of Education, and the rules adopted by the Board of Trustees.
- II. The President may delegate authority to the staff to perform administrative functions necessary to the efficient operation of the College. The responsibility for the performance of these functions shall remain with the President.
- III. The President shall provide to the Board each year, for their review and approval, a legislative package with all attending materials and information in support of the College's written plan and requests for the upcoming Florida legislative session at least 120 days prior to the beginning of the session.
- IV. The President is hereby authorized to sign, on behalf of the Board, all contracts and other documents reflecting action previously approved or authorized by the Board. In addition, all contracts including those involving expenditures not exceeding the amount as specified in Section 287.017, Florida Statutes, for Category Five may be approved and signed by the President or designee. Contracts involving expenditures will be listed in an informational report to the Board quarterly.
- V. Alternatively, at the discretion of the President, a Request for Contract may be:
  - A. Considered by the President's Executive Committee prior to final approval; or
  - B. Considered by the President in consultation with the Board Chair prior to final approval; or
  - C. Presented to the Board for approval.

# RULE

SUBJECT	RESPONSIBILITY AND AUTHORITY OF THE PRESIDENT	PAGE
		1.06-2
LEGAL AUTHORITY	6Hx23-1.06	10/13/15 Revision #15-10

- VI. The President is hereby authorized to designate an individual to serve in place of the President during his or her temporary absence, incapacity or in emergencies when the President is unavailable. In the event that the President has not so designated, the chief academic officer, and if the chief academic officer is not available to serve, the chief administrative officer, shall temporarily serve in the President's place until such time as the Board can designate an acting president, if necessary.
- VII. It shall be the responsibility of the President or a committee appointed by the President, where he deems such to be necessary, to ensure that all elections held within the College, except those held pursuant to Chapter 447, Florida Statutes, which are supervised by the public employees relations commission, are carried out in a fair and equitable manner.

Specific Authority: 1001.64(2) & (4), F.S.

Law Implemented: 1001.64, 1001.65, F.S.; Rule 6A-14.026, F.A.C.

History: This history reflects changes to the rule and procedure which were formerly combined. Formerly - 6Hx23-2.201; Adopted - 7/2/68; Readopted - 7/15/71, 10/25/77; Amended - 9/25/73, 2/27/77, 5/17/79, 11/20/79, 9/17/81, 3/3/82, 8/19/82; Filed - 8/19/82; Effective - 10/1/82; 11/21/00. Filed - 11/21/00. Proposed Date To Become Effective - January 1, 2001; 8/16/11. Filed - 8/16/11. Effective - 8/16/11; 10/13/15. Filed - 10/13/15. Effective - 10/13/15.